

INNOVATIONS IN 2022.



**HEART OF ANY
INSTALLATION**



 **KAISER**



Innovations and centrepieces!

They make the decisive difference in every installation: our innovative centrepieces! Especially when it comes to using the optimum solutions from the areas of flush-mounted, cavity wall and concrete construction even more efficiently and economically in the trades and industrial production.

With KAISER Connectivity for professional fibre optic broadband expansion, the electrical trade has a comprehensive product range for "ready to splice" installation, the new E3S Connect® range for "pluggable" installation.

The modular system for pluggable electrical installations from KAISER offers flexibility and cost-effectiveness as well as new solutions for professional industrial applications.

On our homepage and social media channels you will find all information, news and documents about our products and systems.

Be inspired by the many innovations and solutions!

Best regards, Burkard and Ulrich Kaiser



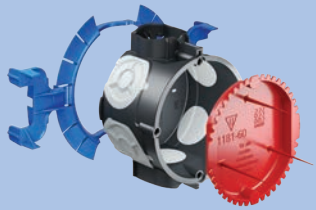
You can also find our products in our current **KAISER catalogue** and **manual**.

Exciting news on all media platforms.

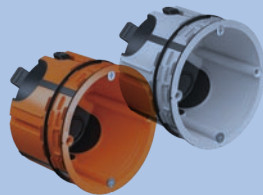
We continually provide you with exciting news in the KAISER newsletter and on our social media platforms. Here you can find everything about products, event information and insights into our company.



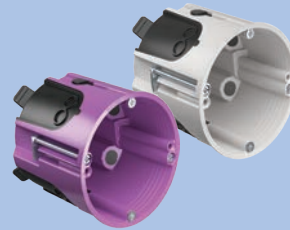
Innovations in 2022 at a glance.



KLEMMFIX® | 1159-03
One-gang box ECON® | 1055-21
Signal cove | 1181-60



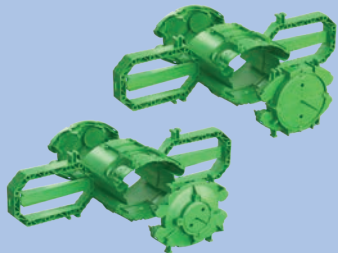
One-gang junction box
O-range ECON® Fix
9264-12/-72



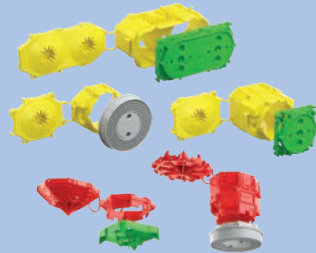
O-range ECON® Data
one-gang connection box
9280-22/-78



HWD 90 One-gang box | 9463-01
HWD 90 One-gang junction box | 9464-01
HWD 90 Electronics box | 9462-94



Prefix® concrete construction boxes
1211-01 | 1211-02



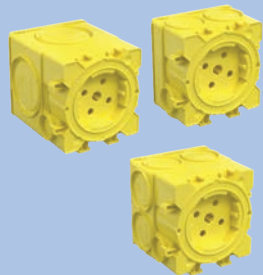
System B¹ for wall and ceiling



Signal cover for HaloX®
luminaire and loudspeaker housing
1281-31/ -32/ -33



System magnet | 1299-69
System magnet PLUS | 1299-70



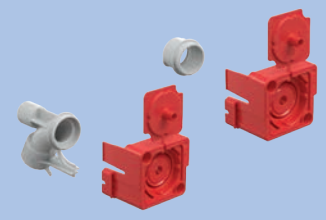
B² Device junction boxes
for system magnet
1262-06 | 1263-06 | 1264-06



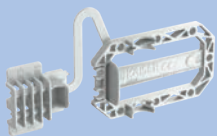
Large slab ceiling box 115
for system magnet
1227-16



HaloX® luminaire and loudspeaker housing
for system magnet



Wall and ceiling transitions
for system magnet
1261-82 /-83 /-84 /-92 /-93 /-94



Prefix® universal support
1261-00



Subscriber connection (FO-SC), surface-mounted unpopulated, partially populated, ready for splicing



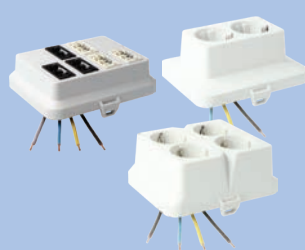
Subscriber connection (FO-SC)
E3S Connect®, surface-mounted, connection at HTP / FO-BC



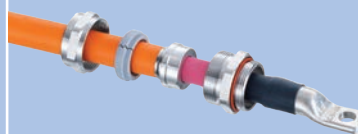
Subscriber connection (FO-SC)
flush-mounting, partially equipped



Subscriber connection (FO-SC) E3S Connect®, flush-mounting, connection to HTP / FO-BC



Pluggable electrical installation
AK2 modular system



Cable gland
Evolution EMC



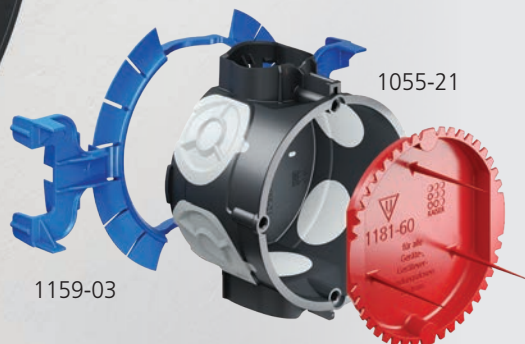
Multiple feed-through
AGRO MULTI CABLE ENTRY (MCE)

**THE BLUE
KLEMMFIX®**

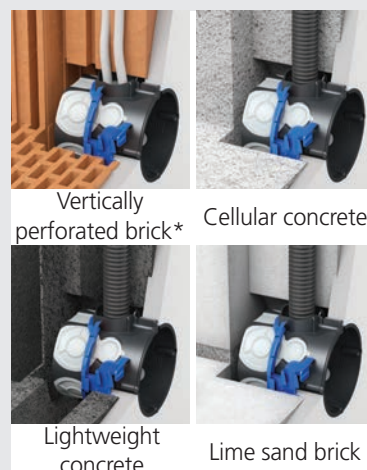
**NOW ALSO FOR STONES
WITH CHAMBERS**

You can forget about plastering! Plaster-free assembly with KLEMMFIX®.

The **KLEMMFIX® system** saves up to 50% installation time compared to the conventional installation of KAISER flush-mounting boxes with plaster. KLEMMFIX® fixes the box securely in the wall before plastering and holds it in position. The blue KLEMMFIX®. Now also for bricks with chambers. Flush-mounting boxes with ECON® technology and multi-membrane enable guaranteed air-tight installation. They offer a variety of options for air-tight conduit and cable entries. The new **ECON® multi-membrane** allows the insertion of several cables without gusset formation.



Product video



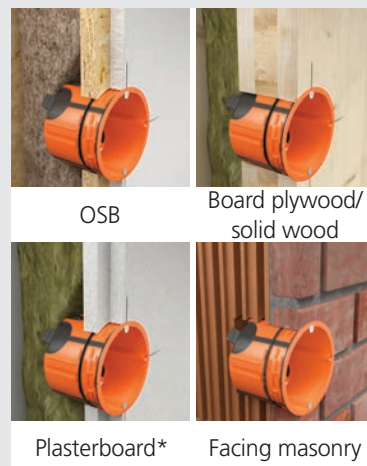
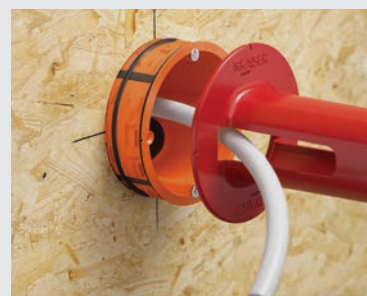
* Vertically perforated bricks with and without filling, solid bricks

Lug-free!

Orange ECON® Fix. Plug - Align - Clamp - Done!

O-range ECON® Fix. Mounted without lugs. Fast and secure.

With the new O-range ECON® Fix one-gang junction box, installation is significantly faster and easier thanks to the lug-free clamping ribs for fastening in various wall material combinations, such as OSB panels, board plywood or solid wood, plasterboards or even in facing masonry. Circumferential sealing lamellas on two levels guarantee that the airtight level is maintained. The applied centring bars enable precise, convenient mounting of the one-gang junction box in the installation opening without canting.



Product video

* Not suitable for plasterboard panels!

The new standard for data and network installation. Accessory connection box O-range ECON® data.

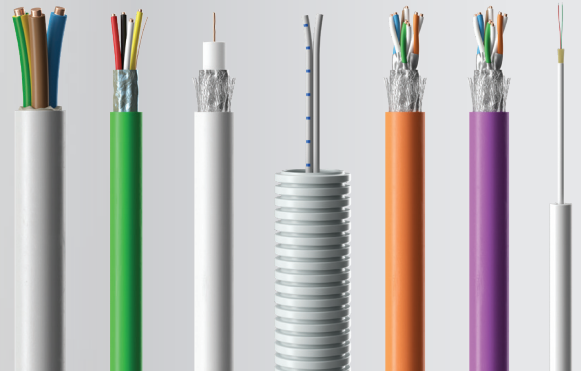
With the new O-range ECON® data accessory connection box, KAISER offers unprecedented ease of installation for connecting and installing communication and network connection boxes. The innovative cable entries for data and network cables are positioned so that the bend radii specified by the cable manufacturer can be maintained and cable kinks prevented in order to ensure optimal data transmission. The new O-range ECON® Data always provides optimal cable routing, regardless of whether you are connecting a network connection box or installing a keystone module.



9280-22



Product video



F30-B
F60-B

certified

HWD 90 fire-protection boxes.

Now also available for timber panel and timber frame construction.

Type approvals
Z-19.21-1788
Z-19.21-2064

ETA
ETA-18/0091

Since the first fire-protection box for fire-protection walls was launched in 2006, its range of applications has been continually expanded.

HWD 90 fire-protection boxes are now also approved for timber walls in timber frame or timber panel construction. They maintain the fire protection properties of the wall with a fire-resistance duration of **F30-B** and **F60-B**.



Schalldämm-
maß R_w bis
77 dB



Product video





One-gang junction box
diameter 60 mm
1211-01



Wall light connection box
diameter 35 mm
1211-02

The new generation –
even easier and faster.

Prefix® concrete construction boxes.

The new Prefix® concrete construction boxes diameter 60 mm and 35 mm, now also have innovative conduit entries, insertion options in the rear part of the box as well as separators that can be broken out at a later date for connecting devices in combinations in addition to the proven product features such as lateral installation clamps for fastening to the reinforcement, mounting clips for pre-fixing the items and marked wave profile for an exact and secure fit.



Product video
Installation



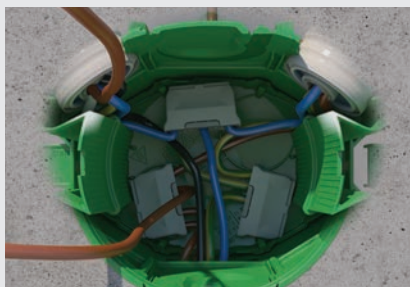
Product video
Inlay work



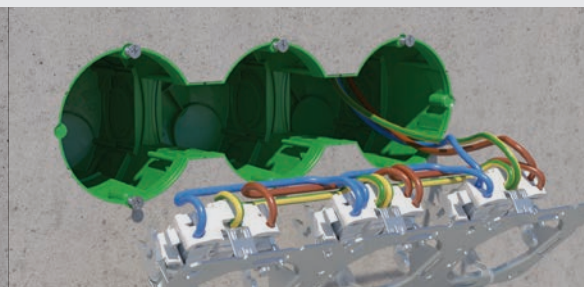
Innovative conduit entries with diameters of 25/32 mm and 20/25 mm, for quick fitting on the construction site



Insertion options up to 25 mm diameter on the rear base of the box



Large inlay and
installation clearance



Easy installation of pre-wired installation accessories in multiple combinations using a bridge that can be broken off afterwards



Sturdy signal bristle and bold colouring for easy retrieval in the concrete surface

The new standard in on-site mixed concrete. B¹ one-gang boxes and B¹ one-gang junction boxes.



Product video
Installation

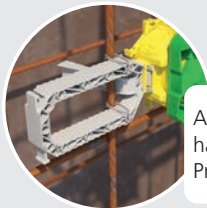
The first choice for **mounting** ...



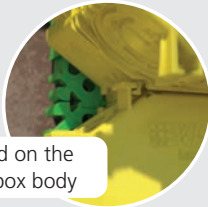
Product video
Inlay work



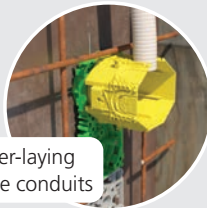
Innovative conduit
opening



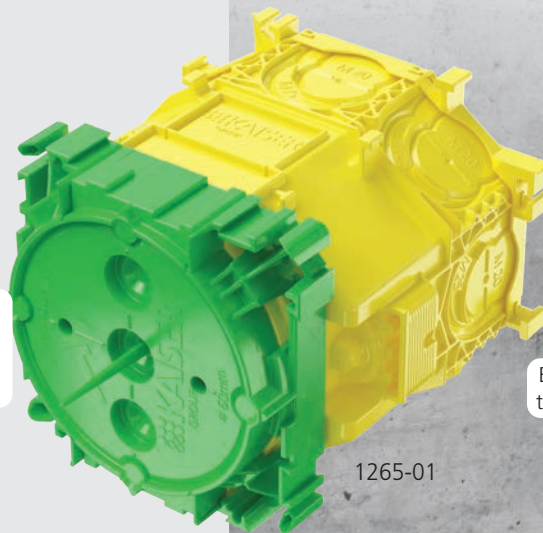
All B¹ wall applications
have 2 stable slots for
Prefix® system wings



Firmly combined on the
front part and box body



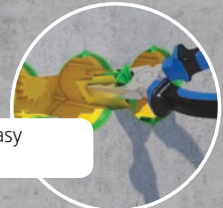
Simple insertion and inter-laying
of commercially available conduits



1265-01



Installation of
pre-wired sockets



Bridges are easy
to break out



Large mounting and
installation space



Signal bristles for easy location of the boxes
after removing the formwork

Added value through innovative signal cover for HaloX®.

The new signal covers with 68, 75 and 80 mm diameters ensure a clean ceiling appearance and save the time-consuming reworking of the installation opening after plastering. As an accessory item for the KAISER HaloX® concrete installation housings, the signal cover is simply inserted into the already opened front part after formwork removal from the rough ceiling or wall. Thus, the installation opening is securely closed and protected against penetration of plaster.



Product video



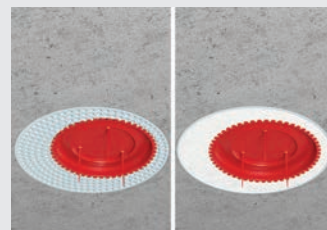
1281-31/ -32/ -33



After formwork removal and
pull-in of the supply conduits,
the signal cover is inserted into
the installation opening.



The red signal bristles are flexible
during the smoothing process
and do not hinder this work step
but, at the same time, are stable
enough to keep the position in
the plaster surface recognisable.



In addition to being able to
use the HaloX® front parts
with fixed exit opening, these
can also be inserted into the
universal HaloX® front parts.



In the case of factory-fitted
HaloX® housings for one of the
system magnets (e.g. 1299-69),
the signal covers allow the
recess to be smoothed or filled
over the entire surface.



System magnet
1299-69



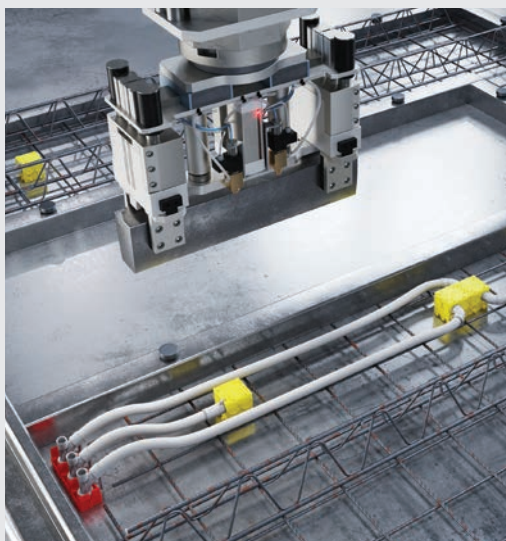
System magnet PLUS
1299-70

Solutions for automated precast concrete in concrete construction. **System magnet** and **system magnet PLUS**.

The system magnet is suitable for all installation parts required in wall and ceiling production to prepare the electrical installation in-factory. The system magnet can be used for correct positioning in both manual and automated production. Fully automated prefabrication in the precast factories is possible with the system magnet PLUS. In automated production, the magnet can be placed on the formwork table automatically and in the correct position using the multifunction gripper. The magnet's high adhesive force of 500 N ensures that it remains exactly where the installation parts have been placed in their correct position.



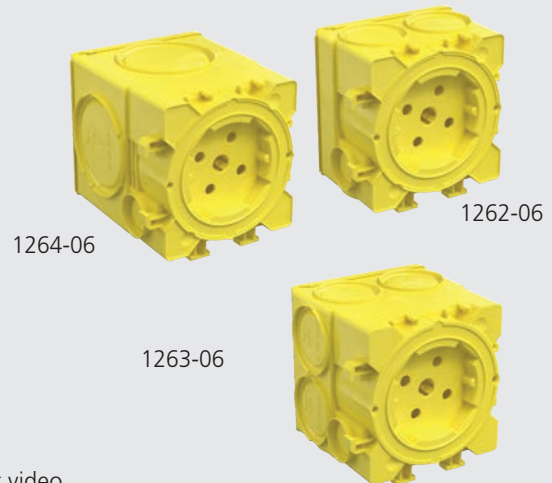
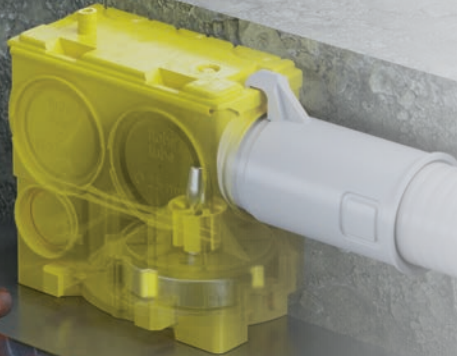
Product video





For system magnet and system magnet PLUS. **B² one-gang junction boxes.**

The new B² one-gang junction boxes for precast concrete offer plenty of space for terminals and cables thanks to their large volume and ease of assembly. The version with a slot for the system magnet and system magnet PLUS (item no. 1299-69/1299-70 – available separately) is perfect for quick attachment to system magnets that have already been set automatically.



Product video



For system magnet and system magnet PLUS. **Large slab ceiling box 115.**

The large slab ceiling box is suitable for in-factory installation in prefabricated ceilings. The version with a slot for the system magnet and system magnet PLUS (item no. 1299-69/1299-70 – available separately) is perfect for quick attachment to system magnets that have already been set automatically. The large slab ceiling box is already a part of the ceiling when it reaches the construction site and enables the quick insertion of empty conduits.



Product video

1227-16



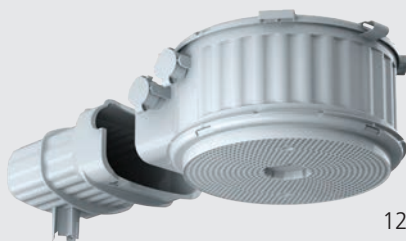
For system magnet and system magnet PLUS. **HaloX® luminaire and loudspeaker housings.**

System HaloX® 180 and 250 are designed as a single piece for fitting in precast concrete. Markings on the housing facilitate alignment on the formwork table. The magnet attachment enclosures are available with pre-fitted front parts to accommodate the system magnet and system magnet PLUS (item no. 1299-69/1299-70 – available separately). The integrated slot for the system magnet enables a safe, formwork-flush fit on the horizontal steel formwork for the circulation systems used in the concrete plants.

1282-74
1283-74



1282-75



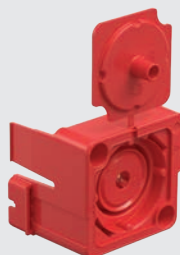
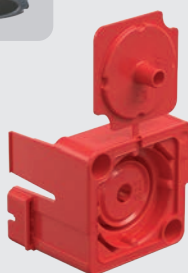
1282-76
1283-76



Product video



1261-82 /-83 /-84



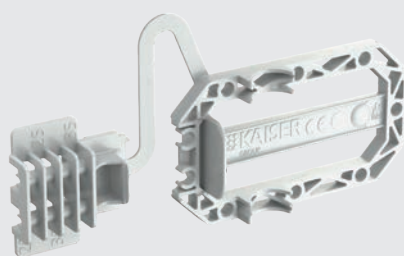
1261-92 /-93 /-94

For system magnet and system magnet PLUS. **Wall and ceiling transitions.**

For the first time, the new end and transition bushes with 20, 25 and 32 mm diameters, in addition to 30° wall and ceiling transition, allow the automated positioning and fastening of conduit connections in precast concrete elements. The integrated slot for the system magnet and system magnet PLUS (Art. No. 1299-69/1299-70 – available separately) enables a safe, formwork-flush fit on the horizontal steel formwork for the circulation systems used in the concrete plants.



Product video



1261-00

For electrical installations in solid wall elements on the opposing formwork side. **Prefix® universal support.**

The Prefix® universal support enables simple, fast fitting of electrical installations in solid wall elements on the opposing formwork side without a support element for the steel formwork table. The support can be easily adjusted to the required concrete covering by means of a snap-in connection and attached to the new end and transition bushes and wall and ceiling transitions 30° by means of a snap-in connection.





Solutions for a professional fibre-to-the-home network

Fibre-optic technology is today's state-of-the-art cabling technology for telephony, Internet and television not only in the wide-area network and street distribution but also in the **building distribution right down to the residential unit**. Fibre-optic cables transmit data optically at the speed of light. At the same time, fibre-optic technology offers a far higher bandwidth compared to conventional copper transmission technology. This enables the transfer of a significantly larger amount of information or data per unit of time.

For this reason, fibre-optic technology is the data transmission solution of the present and future. In addition to ever-increasing **data volumes, security and durability** are other important aspects. Fibre-optic cables can be laid over long distances without signal amplifiers. Fibre optics are resistant to ageing and weathering and are hardly susceptible to failure. Furthermore, fibre optics are resistant to chemical influences and insensitive to electrical and magnetic influences (EMC). Almost full eavesdropping security is also ensured compared to conventional copper lines.

Fast connections with low latency, high availability and enormous investment protection are therefore the absolute strengths of end-to-end fibre-optic networking. Fibre-optic technology is also particularly suitable for networking in buildings (residential buildings and businesses) in order to equip them with the highest possible bandwidth in a future-proof way. **The building transition point (BTP) / fibre optic termination point (FO-TP)** forms the transition from street distribution (network level 3) to building distribution (network level 4). At this transition, the responsibility changes from the network operator to the building owner.

The responsibility of the network operator ends with the splicing and positioning of the individual optical fibres in the respective splice cassettes (closure of the operator network). The installation and cabling in the building is the owner's responsibility. The building network consists of the secondary area (vertical cabling) and the tertiary cabling (horizontal cabling).





E3S Connect®

The completely pluggable solution for a building network based on fibre-optics (NE4)

Continuous fibre-optic in-house cabling as a purely pluggable solution, here, with E3S Connect®, KAISER offers a complete product portfolio for setting up the NE4 building network. The installation of the fibre-optic connectors and connections is very simple, splice-free and toolless.

- Complete in-house cabling from KAISER
- No splicing, only plugging
- Time saving per building / project
- Solution for the electrician
- Certified GHMT system

Product video



One subscriber connection, multiple application scenarios. E3S Connect® subscriber connection for surface mounting.



The innovative fibre-optic subscriber connection (FO-SC) impresses with a compact design of only 16 mm installation height. The simple design was chosen especially for optimal adaptation in the living area.

In addition, the fibre-optic subscriber connection (FO-SC) offers three different cable entries. The installation can be surface-mounted on the wall (feed line from the underside), surface-mounted on the KAISER installation box (feed line from the rear) and in the multimedia distributor (feed line from the underside) on the perforated plate.

Due to the wide range of installation options, the fibre-optic subscriber connection is suitable for both new and existing buildings.

Cable entry

High-quality fibre-optic cable

E3S-LC/APC connector for connection to the FO-BD

Pull-in aid



Simple surface mounting

IP20

Convenient cable laying

E3S-LC/APC connector for connection to the FO-SC

Alternatively, variants for the splice connection are available

- Available not equipped, partially equipped and ready to splice
- Tray for up to 4x crimp-splice connections
- Overlength management
- Suitable for CSP (crimp splice protection)
- Integrated strain relief

When optics matter.



E3S Connect® subscriber connection for flush-mounting.

The first design-compatible fibre-optic subscriber connection on the market! The innovative design allows flush-mounting in all KAISER one-gang junction boxes as well as the O-range ECON® Data. Furthermore, the fibre-optic subscriber connection is design-compatible with all common design covers (TAE) from the switch manufacturers. The fibre-optic subscriber connection is suitable for installation in new buildings and for high-quality renovation.



TAE design
for the highest design compatibility

Robust support ring

High-quality fibre-optic cable

E3S-LC/APC connector for connection to the FO-BC

Pull-in aid

Harmonised design

Available with LC "Quad" coupling

Design compatible

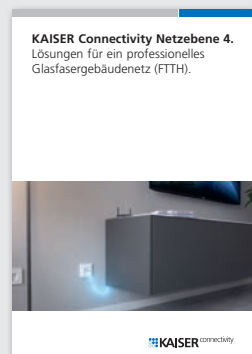
Convenient cable laying

E3S-LC/APC connector for connection to the FO-SC



Alternatively, variants for the splice connection are available

- Partially equipped and ready to splice options available
- Overlength management
- Suitable for CSP (crimp splice protection)



You can find more information in our new brochure **KAISER Connectivity Network Level 4**.

Pluggable electrical installation. AK2 modular system

Pre-assembled components and systems are in demand as a solution for planning and installation, especially for efficient, on-time construction.

Thus, a time-consuming, cost-intensive electrical installation on the construction site can be economically optimized by pre-assembled, pluggable systems.

The specialist planner or electrical installer plans the installation using modular components and cables that are individually pre-assembled in their own workshop or at the manufacturer's premises. At the construction site, these only have to be assembled for commissioning according to the specified plan. This enables time savings of up to 70% at the construction site. And if schedules are tight, selected system partners from the electrical trade can be deployed on site as required.

A pluggable installation simultaneously increases the safety, accuracy and transparency of the installation. Time overlaps with other trades can be coordinated more easily and more reliably.

This type of planning also enables a very efficient subsequent adjustment of the installation in the event of the expansion or redesign of the usable areas, even during operation. This in turn leads to savings effects for the operator and tenant throughout the entire building life cycle.

The pluggable installation from KAISER provides safe solutions with which every installation task can be perfectly mastered.



The **AK2 modular system** can cover a wide range of applications, as it offers the right solution for all installation tasks. The modular system consists of a basic box, a front part and attachment accessories in numerous variants. This allows individually configured housings to be assembled for pluggable electrical installations.



Product video



Steckbare Installation von KAISER.
Zeitsparend und flexibel.

Further information can be found in the new brochure
"Pluggable installation from KAISER"



EMC cable gland

suitable for the most common HV on-board power cables.

Crimped and pluggable EMC shield contact solution

Fast assembly & fast service.
No shielding injuries.

Bottom part

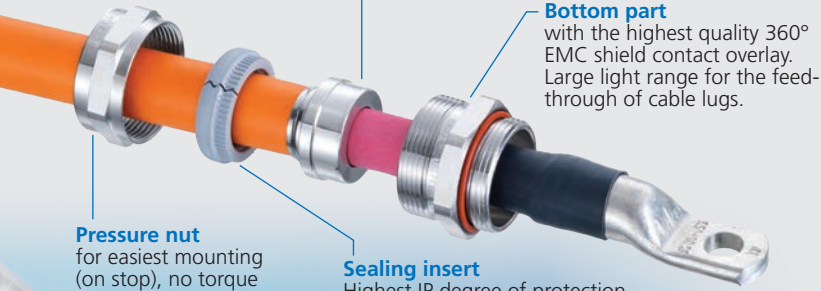
with the highest quality 360° EMC shield contact overlay.
Large light range for the feed-through of cable lugs.

Pressure nut

for easiest mounting (on stop), no torque required.

Sealing insert

Highest IP degree of protection.
Anti-twist protection of the cable due to serration.
Wide temperature range -40 to 140°C.



EVOlution EMC.

First EMC cable gland with crimped and pluggable EMC shield contact solution.

The **EVOlution EMC** cable gland ensures a process-safe and durable shield connection of shielded cables in the field of electromobility. The new design allows the shield contact to be inserted several times in the lower part, thus enabling the cables to be pre-assembled. Pre-assembled cable harnesses reduce assembly costs, simplify production processes and are user-friendly. The system also allows cables to be assembled in the field using the battery-powered AXI PRESS tool. This enables repairs to cable harnesses as well as the flexible and precisely fitting assembly of prototypes. The **EVOlution EMC** cable gland was developed specifically for use in electrically powered vehicles and can therefore withstand the toughest demands in operation.



AGRO MULTI CABLE ENTRY (MCE).

The innovative multiple feed-through for tight and process-safe cable feed-throughs.



MCE system

Great robustness and tightness.
Also suitable for applications with increased environmental requirements.
Pre-assembled systems can be installed efficiently at the assembly site.

Density units

Sealing according to IP 68 (min. 0.1 bar during 30 minutes).
Ensuring high pull-out forces.
Cable clamping range from diameter 5.5 to 21.5 mm.

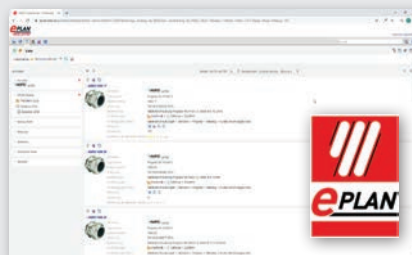
Housing

High-strength half shells made of anodised aluminium. Drilling pattern based on industry standard dimensions.

- Comprehensive product range with over 3,500 products in our special cable glands catalogue or at www.kaiser-elektro.de
- Realisation of individual customer solutions
- CAD data



Additional information at:
www.kaiser-elektro.de



As a supplement to our cable gland portfolio, digital planning data is now also available in the EPLAN Data Portal

Solutions and systems for professional installations.

KAISER has been developing and producing systems and products as the basis for professional installation work since 1904. Planners and fitters all over the world use our practice-oriented solutions for their daily work in all installation areas.



Electrical installation.

Innovative, safe and economically viable solutions for a wide range of applications in buildings and ships. They make daily work easier and ensure safe, sustainable installation results in both traditional and pluggable electrical installations.



Connectivity / Optic fibre broadband expansion.

A practical, innovative solution offer for professionals. From street distribution to building distribution to flat distribution, pluggable and pre-assembled, ready-to-splice products are available for efficient installation.



Cable glands / industrial products.

AGRO cable glands made from plastic, brass or stainless steel for the highest quality and practicality. The complete programme for trade and industry also includes products with enhanced requirements (EMC, EX), elbow cable glands or universal and multi-cable entries.

Technical information and advice

All further information on products, system solutions and communication media can be found on our website at **www.kaiser-elektro.de**

For any additional questions or information, please do not hesitate to contact our technical support team who will be happy to assist you: **+49 (0) 23 55 / 809-61 · technik@kaiser-elektro.de**

KAISER GmbH & Co. KG

Ramsloh 4 · 58579 Schalksmuehle
GERMANY

Phone: +49 (0) 23 55 809 0 · Fax: +49 (0) 23 55 809-21
www.kaiser-elektro.de · info@kaiser-elektro.de

