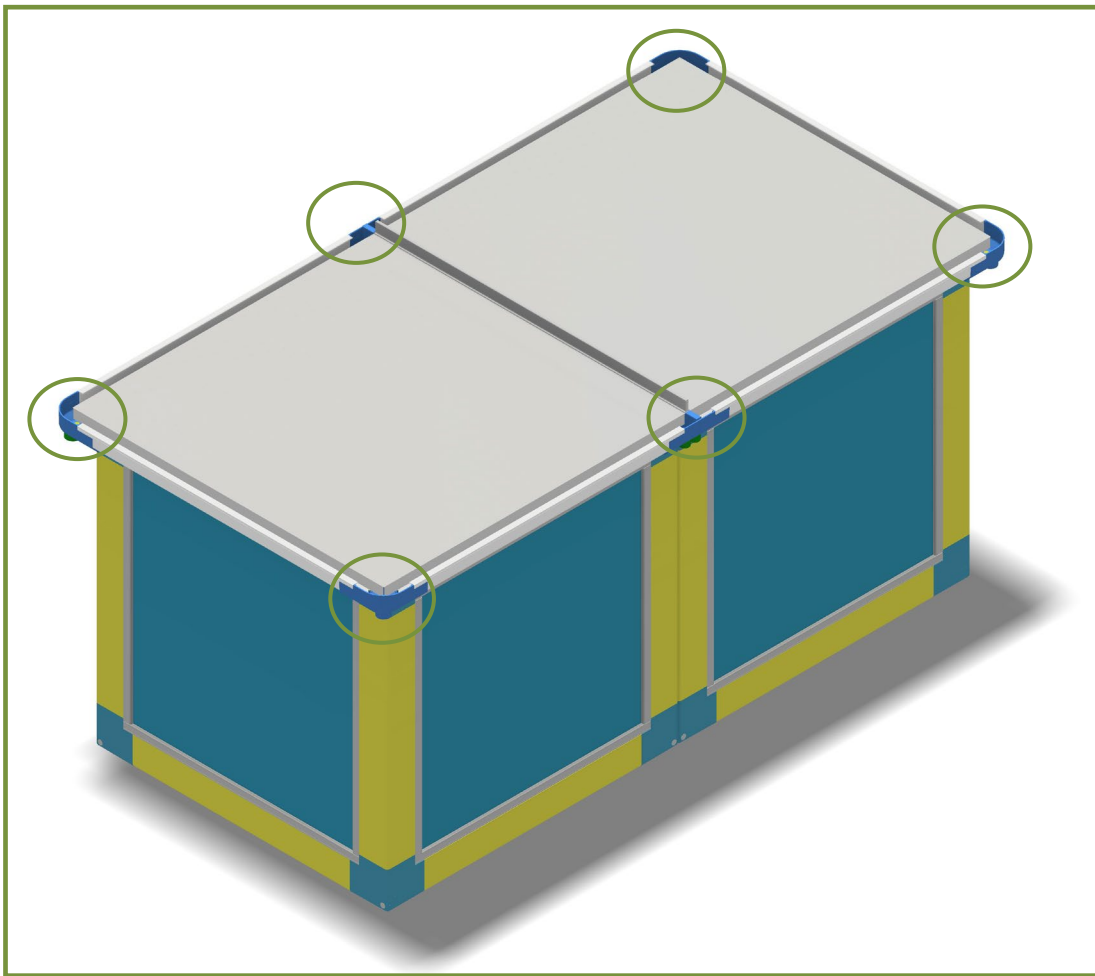


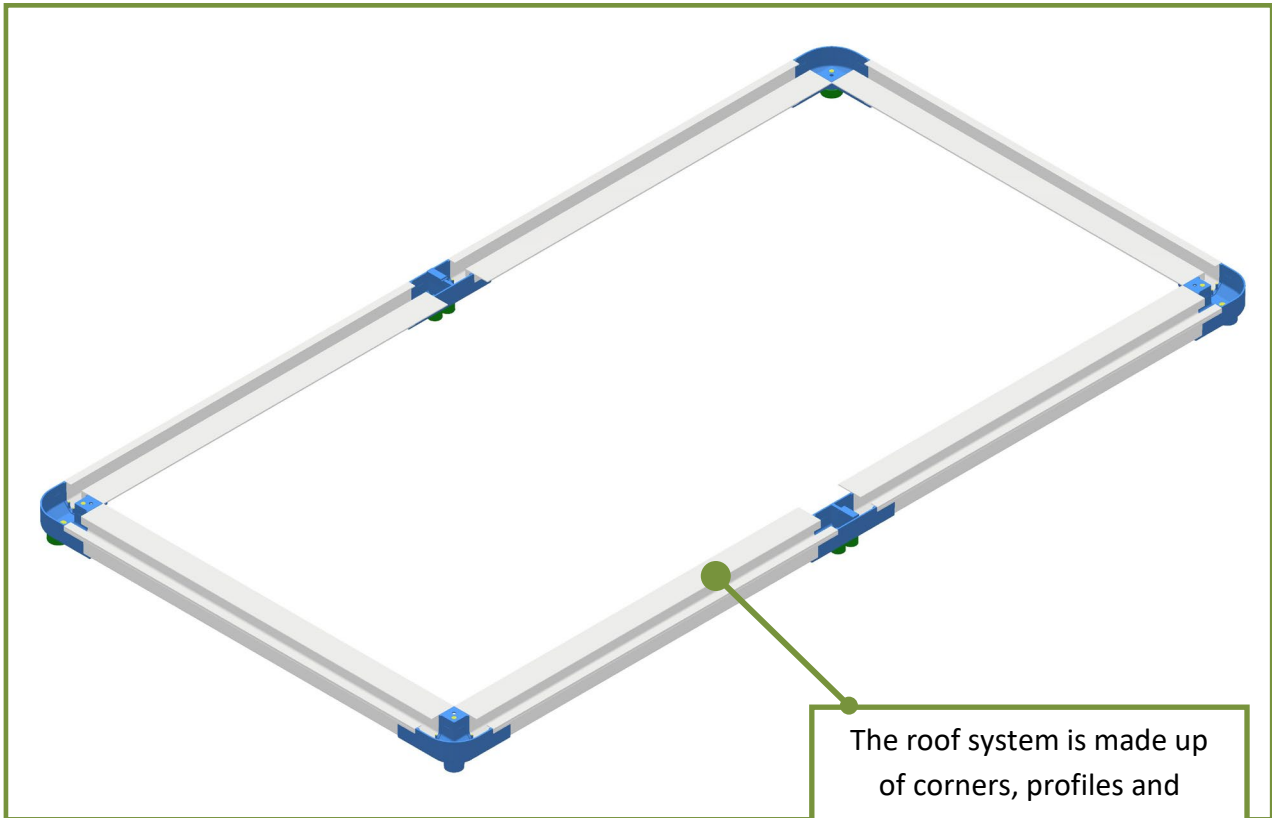
NEW 2022
ROOF SYSTEM

**The ProLam universal roof system
suitable for all AHUs**

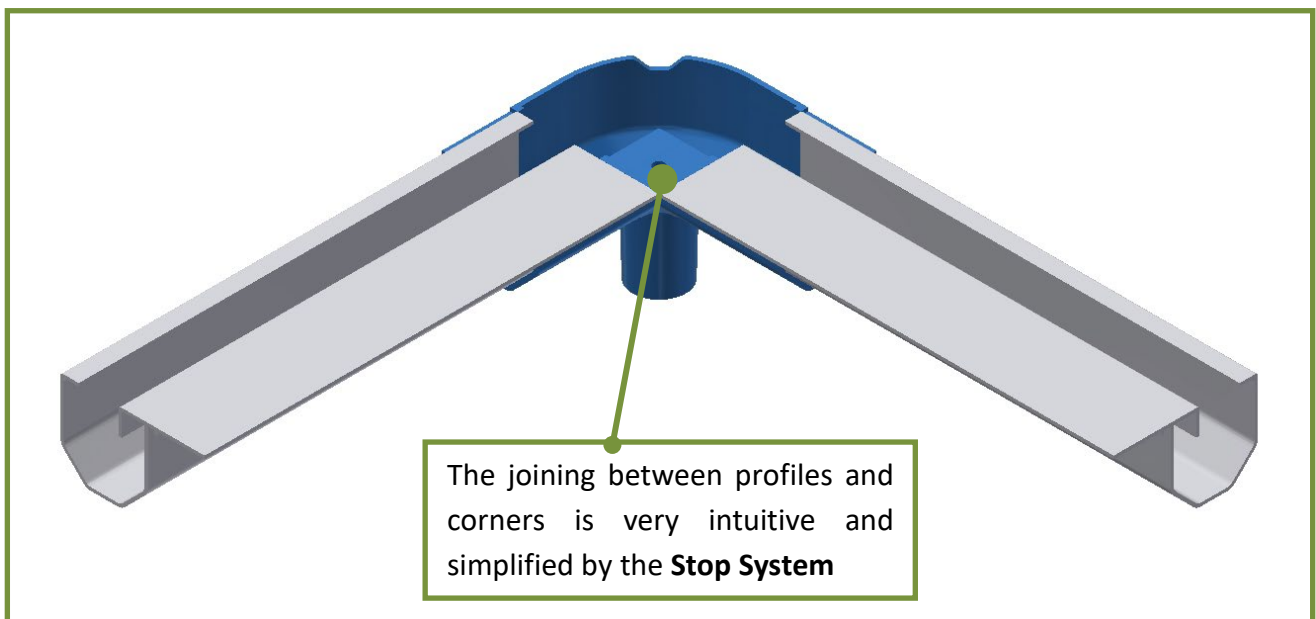


The new roof system allows a **proper disposal of rainwater** through a **specifically developed gutter** ensuring a longer lifetime to the AHU.

The system is designed to maximize its **adaptability**, so it could fit the various types of carpentry and already installed Air Handling Units too.



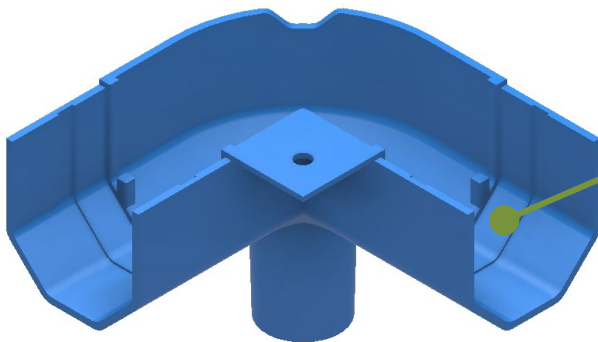
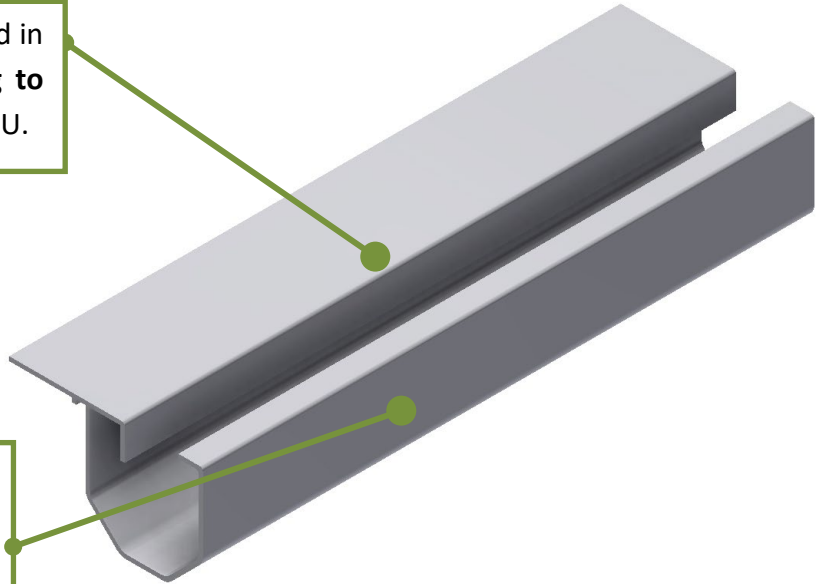
The roof system is made up of corners, profiles and connection joints specifically designed to make the system **modular and adaptable**.



The joining between profiles and corners is very intuitive and simplified by the **Stop System**

The shape of the profile is designed in order to allow a **very easy fixing to the metal sheet** as cover of the AHU.

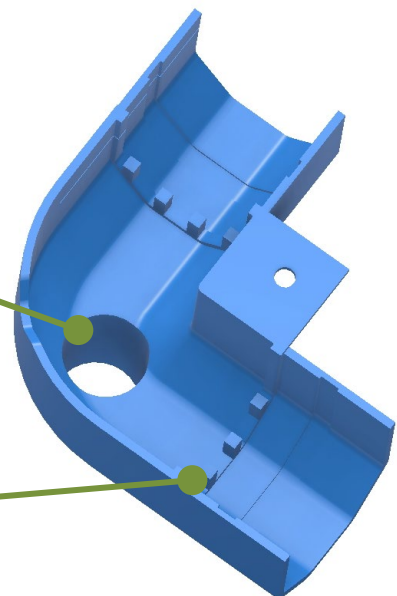
The total **absence of sharp edges** provides the Aluminum profile **accident-prevention features**.

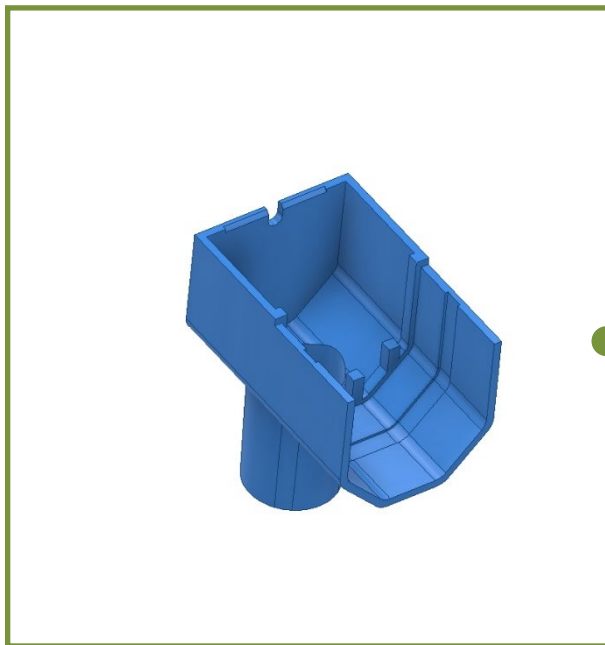
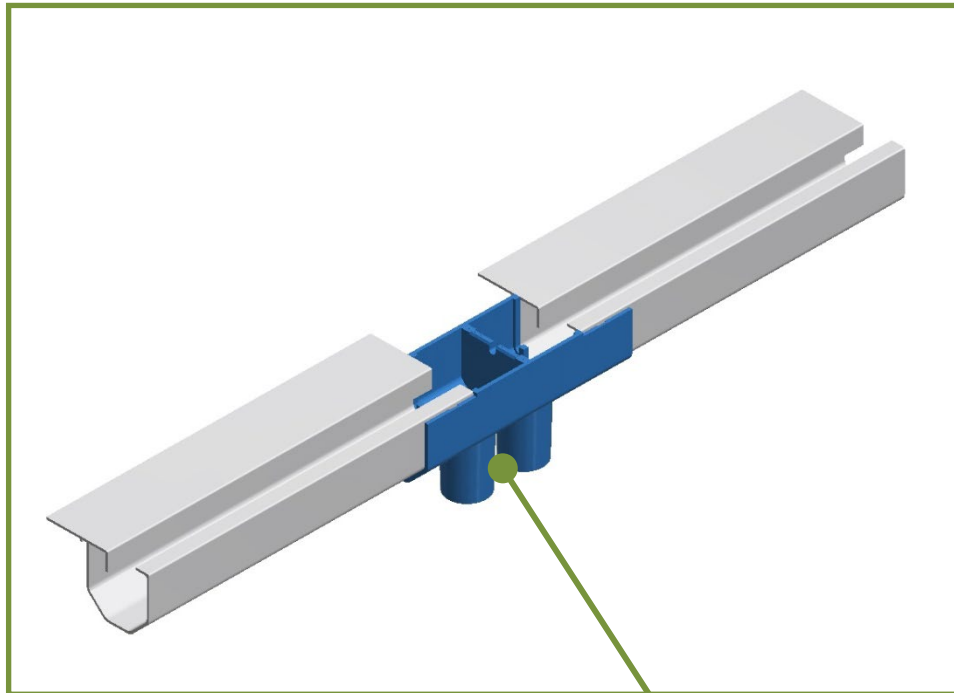


The Nylon-made corner is specifically designed to achieve a perfect connection with the profile.

At the bottom of the corner is located a specific **area for the collection of the water**.
The water flow could be directed far away from the AHU through a **drainage hole**.

The **Stop System**: a special stepped groove allows a **tight and easy connection** between profile and corner piece.





The **half connection joint** guarantees the **perfect continuity of the roof system** once assembled on multi-section AHU.

ROOF SYSTEM

The new roof solution developed
for the HVAC industry