



VAZ

A symbiosis of functionality and design –
our all-rounder among single-shaft shredders



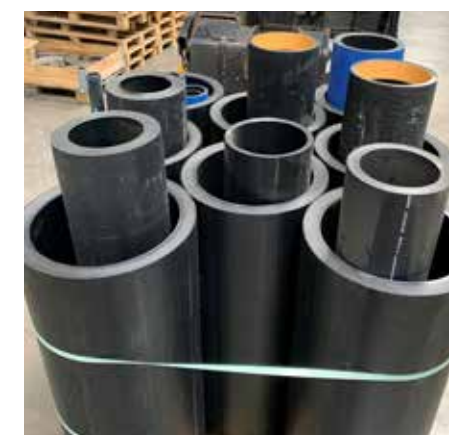
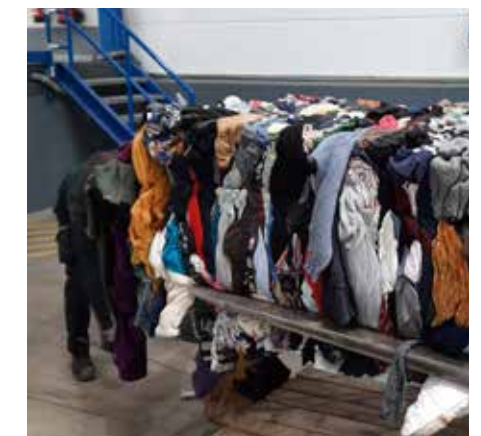
The generalist – Universally applicable for a wide range of materials

A milestone in the shredding of any material

Unbeatable performance and unlimited flexibility thanks to intelligent and versatile rotor systems, screen variations, drives and cutting-edge features.



In addition to attractive new features, the single-shaft shredder impresses above all with its modular design. This series, consisting of the VAZ 1700, VAZ 2000 and VAZ 2500 models, can be used universally – perfect for a wide range of usage scenarios.



An unbeatable symbiosis: sound know-how and future-shaping features

Our progress starts with our in-depth expertise and our future-shaping features, which ensure an efficient material flow and are designed to meet any requirement, no matter how specific.



A first counter knife and an optional second one

- Segmented sections
- Easily adjustable from outside the machine
- Optimised cutting performance thanks to the narrow cutting gap
- Can be used in 4 ways – plus attractive operating costs – plus long service lives



The voluminous shredding chamber provides plenty of room for feeding in material

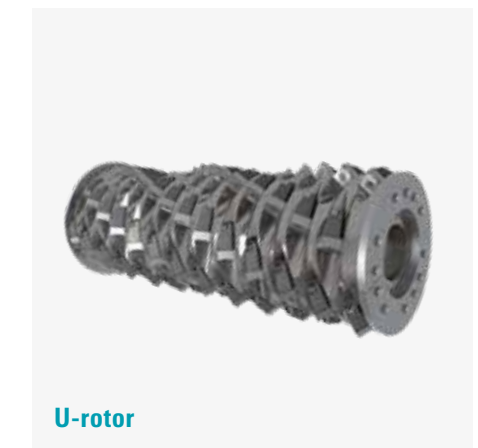
- Guarantees a safe material intake
- Es können sperrige Materialien sowie Bulky materials and locked bales of any size can be fed into the machine



W-rotor



V-rotor



U-rotor

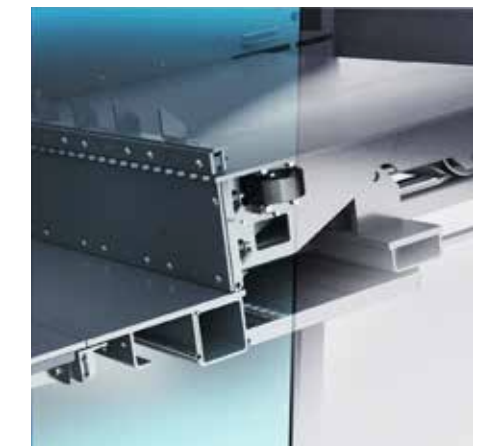
Possible rotor designs

Depending on the application, Vecoplan AG offers different rotor configurations for maximum cutting performance, high throughput and homogeneous output with low fine dust/particle content and minimum particle variance.

The high-performance cutting unit is made of solid steel. It's equipped with individual hardened knives that can be used four times and changed quickly. This also minimises maintenance times and operating costs.

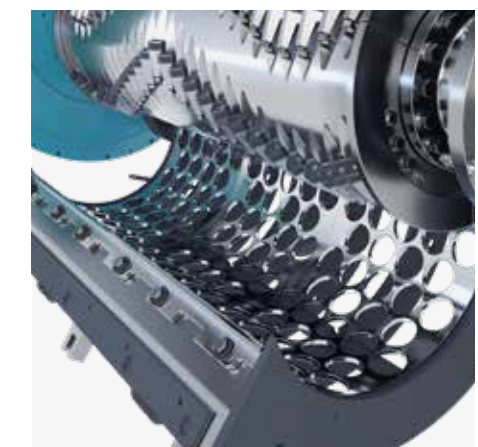
Frequency controlled ram

- With continuously adjustable ram speed
- High throughput is guaranteed, even with challenging or very light input materials
- Linear ram for optimal material intake of bales, for instance
- The ram design has no edges on which material deposits might form
- The ram movement does not cause bales to fall out of the machine



VAZ screen

- Hydraulically-operated, swivelling screen basket
- Adjustment of grain size output thanks to different screen perforations
- Segmented sections
- Positions can be interchanged to achieve an optimum wear pattern or the longest possible service life





Smooth handling: the plant details



Wide maintenance doors

- Excellent accessibility
- All work on knives, counter knives and screens (changing, setting and adjusting work) is optimised in terms of time and cost
- Maintenance work carried out in ergonomically favourable, upright position



Optimised handling of extraneous materials

- Automatic detection of extraneous materials
- Consistent avoidance of machine damage
- Practical and fast removal of extraneous materials via the hydraulic bottom flap
- Downtimes are consistently minimised



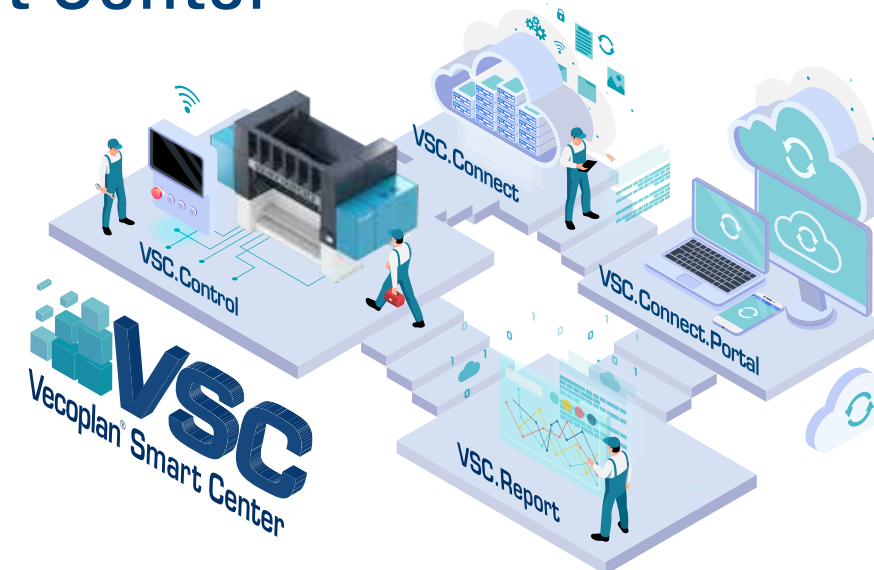
Integrated control cabinet in Machine housing

- Efficient, safe installation and commissioning – only the feeder lines have to be connected
- Space-saving and safe positioning of the control cabinet
- Easy operation of the components directly on the machine

Digitally advanced – our Vecoplan Smart Center

The Vecoplan Smart Center (VSC) is Vecoplan's digitalisation concept for the maximum efficiency of your machine and your plant.

The integrated and intuitive VSC.control operating panel serves as a communication medium for the cutting-edge control of your machine and direct communication with Vecoplan VSC.connect will enable you to network your machine and access additional online services, such as online commissioning, remote service, performance indicators and even a media database.



VSC.control

User-oriented machine operation with extremely useful features:



Dashboard

gives you an overview of individual actual values and current messages

History

History of messages enables conclusions to be drawn and ensures faster troubleshooting

Data

The distinctive data recorder records all values

Camera Integration

Transmission of the camera image from the machine interior

VSC.connect

You can activate additional services by using different VSC applications:



Remote Services

Access the machines and equipment at any time with your mobile devices

Notifications

Get immediate notifications of any malfunctions or other messages

Live Connection

You can view live images at any time via an integrated camera or by using data glasses



Safe to operate: Flipper Our machine breakage protection

The shredder is equipped with a pneumatically tensioned counter knife called a flipper, which protects it against damage caused by extraneous materials.

How the Flipper works

- Two compressed air springs hold the counter knife cross-bar in its working position
- If the adjustable force limit is exceeded, the counter knife can deflect downwards, which prevents severe consequential damage to the cutting unit
- A sensitive overload controller responds quickly to impacts caused by extraneous materials



Advantages

- Consistent prevention of machine damage thanks to the automatic detection of extraneous materials
- Practical and fast removal of extraneous materials via the hydraulic bottom flap
- This also minimises downtimes

Continuous and problem-free operation: HiTorc, the Tesla among drives

Vecoplan relies on the HiTorc drive's proven concept when shredders have to work long and hard.



The Highlights

Improved efficiency – 10–15 %

thanks to the elimination of mechanical drive elements.

Massively energy-saving synchronous motor

in the nominal speed and/or partial load range
When idling, it consumes **only about 10%** of the energy required by a comparable, asynchronous motor.

More advantages

- Increased machine throughput thanks to a broad, usable speed range
- Very dynamic – this improves the start-up and reversing behaviour
- The speed limit is adjustable for throughput or cutting force (torque and inertial moment)
- The drive is 100% insensitive to extraneous materials
- The gearless motor makes the HiTorc almost maintenance-free and noiseless
- No wear parts (belt drive, clutches, etc.).
- Exceptional level of availability
- Almost no drive noise
- Space-saving

Rely on the VAZ – our all-round genius!

Maximise your performance – rely on the functionality and flexibility of our VAZ series! Take advantage of these all-rounders and customise the machine specifically for your usage scenario.

We’ll be happy to advise you – please get in touch with us!

Your advantages

- Versatile usage scenarios
- Exceptional level of availability
- Best possible ease of maintenance
- Hydraulic bottom flap
- VAZ Flipper as machine protection
- Counter knives adjustable from outside the machine
- Best possible value creation thanks to consistent, high-quality output

Technical details

Details		VAZ 1700 L6	VAZ 2000 L6	VAZ 2500 L6
Infeed opening (W x L)	mm	1670 x 2280	1947 x 2280	2500 x 2280
Motor performance	kW	111, 134, 155, 180, 203, 247		
Rotor speed range	Rpm	111 kW → 60–200 134 kW → 60–230 155 kW → 20–100 180 kW → 60–180 203 kW → 60–340 247 kW → 150–420		
Rotor dimensions	mm	Ø 640 x 1660	Ø 640 x 1937	Ø 640 x 2490
Cutting crowns 40 mm x 40 mm	U-rotor	•	•	•
	V-rotor	-	-	-
	W-rotor	-	-	-
Cutting crowns 60 mm x 60 mm	U-rotor	•	•	•
	V-rotor	•	•	•
	W-rotor	•	•	•
Cutting crowns 80 mm x 80 mm	U-rotor	•	•	•
	V-rotor	-	-	-
	W-rotor	•	•	•
Cutting crowns 120 mm x 120 mm	U-rotor	-	-	-
	V-rotor	-	-	-
	W-rotor	•	•	•
Weight (without hopper and steel frame, largest drive)	t	ca. 20	ca. 21,5	ca. 24,5
Overall dimensions (W x L x H) (largest drive)	mm	3810 x 4750 x 2340	4087 x 4750 x 2340	4640 x 4750 x 2340

Subject to technical changes without notice Detailed dimension drawings and load data on request Last updated March 2022





Vecoplan AG
Vor der Bitz 10
56470 Bad Marienberg | Germany
phone +49 2661 62 67-0
fax +49 2661 62 67-70
welcome@vecoplan.com
www.vecoplan.com