

QUALITY IS OUR
FAME & MOTTO



MAHESH TWISTO TECH PVT. LTD.

Mfg. & Exporter : Extrusion Plant for PP Danline, HDPE Monofilament,
PP Fibrillated Tape, Rope Making Machine & Inflow Twisters.



EXTRUSION PLANTS



PP DANLINE EXTRUSION PLANT

MODEL	MTP/DAN 75	MTP/DAN/GF 80	MTP/DAN/GF 90	MTP/DAN/GF 110
Production Output (Kg./Hr.)	125	250	300	400
Max Line Speed (MPM)	150	180	180	180
No. of Godet Rollers	7 / 7	7 / 7	7 / 7	7 / 7
Power (Kw)	135.9	201.67	248.15	314
Weight (Approx.) Kgs.	10000	18000	19000	20000
Dimension (LxWxH in Mtr)	19.2 x 3.5 x 3.2	20 x 4.2 x 3.9	23 x 4.2 x 3.9	24.5 x 4.2 x 3.9

PP TAPELINE EXTRUSION PLANT

MODEL	MTP/TP/ 75	MTP/TP/GF 80	MTP/TP/GF 90	MTP/TP/GF 110
Production Output (Kg./Hr.)	125	250	300	400
Max Line Speed (MPM)	150	180	180	180
No. of Godet Rollers	5 / 7	5 / 7	5 / 7	5 / 7
Power (Kw)	151.1	220.17	288.55	353.85
Weight (Approx.) Kgs.	10500	19000	20000	22000
Dimension (LxWxH in Mtr)	19.2 x 3.5 x 3.2	20 x 4.2 x 3.9	23 x 4.2 x 3.9	24.5 x 4.2 x 3.9

HDPE MONOFILAMENT EXTRUSION PLANT

MODEL	MTP/MONO/75	MTP/MONO/GF 80	MTP/MONO/GF 90
Production Output (Kg./Hr.)	125	225	275
Max Line Speed (MPM)	150	150	150
No. of Godet Rollers	5 / 7	5 / 7	5 / 7
Power (Kw)	147.75	194.72	243.25
Weight (Approx.) Kgs.	9000	16500	17000
Dimension (LxWxH in Mtr)	19.2 x 3.5 x 3.2	20 x 4.2 x 3.9	23 x 4.2 x 3.9

PP CONCRETE FIBRES YARNS EXTRUSION PLANT

MODEL	MTP/CF 75	MTP/CF/GF 80	MTP/CF/GF 90	MTP/CF/GF 100	MTP/CF/GF 110
Production Output (Kg./Hr.)	125	250	300	400	500
Max Line Speed (MPM)	150	180	180	180	180
No. of Godet Rollers	7 / 7 / 7	7 / 7 / 7	7 / 7 / 7	7 / 7 / 7	7 / 7 / 7
Power (Kw)	186.4	273.17	323.15	419	435
Weight (Approx.) Kgs.	14200	22000	25000	27000	30000
Dimension (LxWxH in Mtr)	26.3 x 3.5 x 3.2	30 x 4.2 x 3.9	31.1 x 4.2 x 3.9	31.1 x 4.2 x 3.9	33 x 4.2 x 3.9

KEY FEATURES:

- User friendly touch screen display with separate desk.
- All parameters and reading will be shown on display.
- Denier setting can be done from the display screen.
- Precise denier output will be shown in display.
- Recipe based operating system for easy machine operating.
- Pneumatically operated transparent safety fence guard for godet rollers.
- Emergency full length foot switches parallel to the godet length for both godets.
- Energy calculation for production and power cost on display screen.
- 3 zone pressure transmitters for precise control & denier accuracy.
- Vector speed control system for more stretching accuracy.
- Inter-locking features to avoid the damages of machine components.
- Shift wise, daily, weekly and monthly production reports.
- AC drive fault alarm indication on display.
- Wi-Fi or LAN connectivity.
- Remote monitoring / remote maintenance.
- User access with password protection.
- Extra Features for Smooth and Easy Start.

MECHANICAL ROPE MAKING MACHINE



ROPE MACHINE - MECHANICAL MODEL

ROPE SIZE RANGE	(3 PLY)		(4 PLY)	
	PAY OFF PACKAGE	MODEL NO.	PAY OFF PACKAGE	MODEL NO.
2MM TO 5MM	1 X 3 = 3	MTP/2A-33	1 X 4 = 4	MTP/2A-44
2MM TO 6MM	2 X 3 = 6	MTP/2-36	2 X 4 = 8	MTP/2-48
2MM TO 6MM	3 X 3 = 9	MTP/2-39	3 X 4 = 12	MTP/2-412
4MM TO 8MM	6 X 3 = 18	MTP/4-318	6 X 4 = 24	MTP/4-424
4MM TO 8MM	8 X 3 = 24	MTP/4-324	8 X 4 = 32	MTP/4-432
6MM TO 12MM	10 X 3 = 30	MTP/6-330	10 X 4 = 40	MTP/6-440
6MM TO 12MM	12 X 3 = 36	MTP/6-336	12 X 4 = 48	MTP/6-448
8MM TO 16MM	16 X 3 = 48	MTP/8-348	16 X 4 = 64	MTP/8-464

- KEY FEATURES:**
- Anti twisting unit.
 - Power transmission by timing belts.
 - Digital length counter meter.
 - Door sensor.
 - Take up output on M.S. bobbin.
 - A.C. frequency drive.

- OPTIONAL FEATURES:**
- Feeding capstan mechanism.
 - Direct coiling head.
 - Ele. Wire hoist for removal of final package.
 - Rope Lay S & Z.

COILING MACHINES



- KEY FEATURES:**
- Digital length counter meter.
 - Easy to operate.
 - Layer to layer uniform winding.
 - Mechanical brake system for pay off bobbin.
 - Self adjustable traverse system.

- OPTIONAL FEATURES:**
- A.C. frequency drive
 - Ele. wire hoist for removal of final package.
 - Digital printer attachment.
 - Coil to Recoil mechanism.
 - Pneumatic head opening system

ROPE SIZE RANGE	MODEL NO.
2MM TO 6MM (1 STATION)	MTP/CL-2
2MM TO 6MM (2 STATION)	MTP/CL-2T
2MM TO 6MM (4 STATION)	MTP/CL-2A
4MM TO 8MM	MTP/CL-4
6MM TO 12MM	MTP/CL-6
8MM TO 24MM	MTP/CL-8
12MM TO 32MM	MTP/CL-12
16MM TO 44MM	MTP/CL-16

INFLOW TWISTERS AND WINDERS



INFLOW TWISTERS
MTP/HP-100



4 STATION TWISTER
MTP/OP-12

DENIER RANGE	MODEL NO.
INFLOW TWISTER - DENIER - 7500 TO 100000	MTP/IE-100
4 STATION TWISTER - DENIER - 5000 TO 25000	MTP/OP-12
INFLOW TWISTER - DENIER - 7500 TO 100000 (HIGH SPEED)	MTP/HP-100
INFLOW TWISTER - DENIER - 15000 TO 200000 (HIGH SPEED)	MTP/HP-200
INFLOW TWISTER - DENIER - 30000 TO 300000 (HIGH SPEED)	MTP/HP-300
ACCUMULATOR - DENIER - 7500 TO 100000	MTP/ACC
JUMBO CHEESE WINDER - 10000 TO 150000 DENIER	MTP/CW-500
CHEESE WINDER - 5000 TO 45000 DENIER	MTP/CW-300
BOBBIN WINDER - UP TO 45000 DENIER	MTP/BW-300
BEAM WINDER	MTP/BW
COPS WINDER	MTP/CW-100

KEY FEATURES :

- High Speed & High Performance for better production.
- Direct cheese packages of 4 different size without tube :
150mm x 150mm / 200mm x 200mm / 250mm x 250mm / 300mm x 300mm
- Winding tension & fine pitch adjustment system.
- Pneumatic door opening system.
- User Friendly touch screen display with PLC Control.
- All parameters will be shown on display.
- TPM, RPM, Winding Tension & Twist Direction can be set by touch screen display.
- Weight & Meter set point.
- Machine lubrication warning.
- A.C. Drive fault alarm message on display.
- Production data can be stored to analyze & review.
- Daily, Weekly & Monthly report system. (Direct save in excel format)
- Pneumatic spindle for removal of final package.
- Wi-Fi connectivity system for Computer.



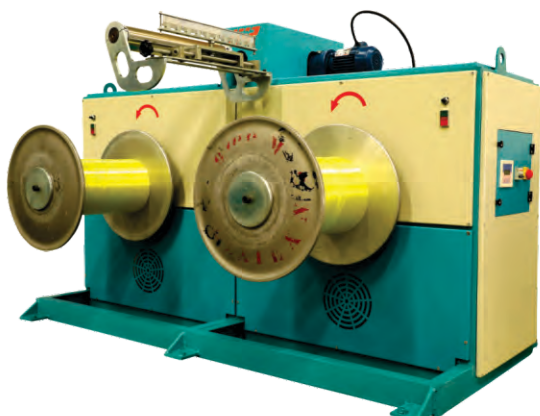
ACCUMULATOR
MTP/ACC



JUMBO CHEESE WINDER
MTP/CW-500



CHEESE WINDER
MTP/CW-300

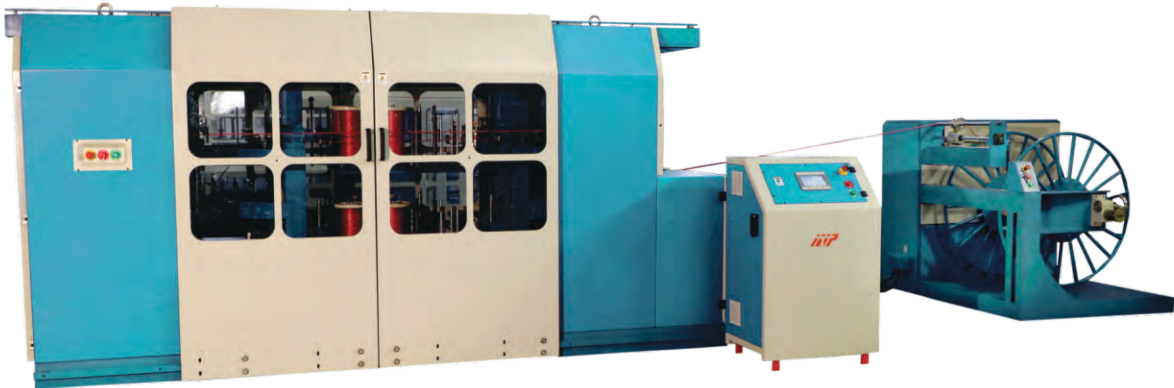


BEAM WINDER MTP/BW



COPS WINDER MTP/CW-100

ENDLESS ROPE MAKING MACHINE



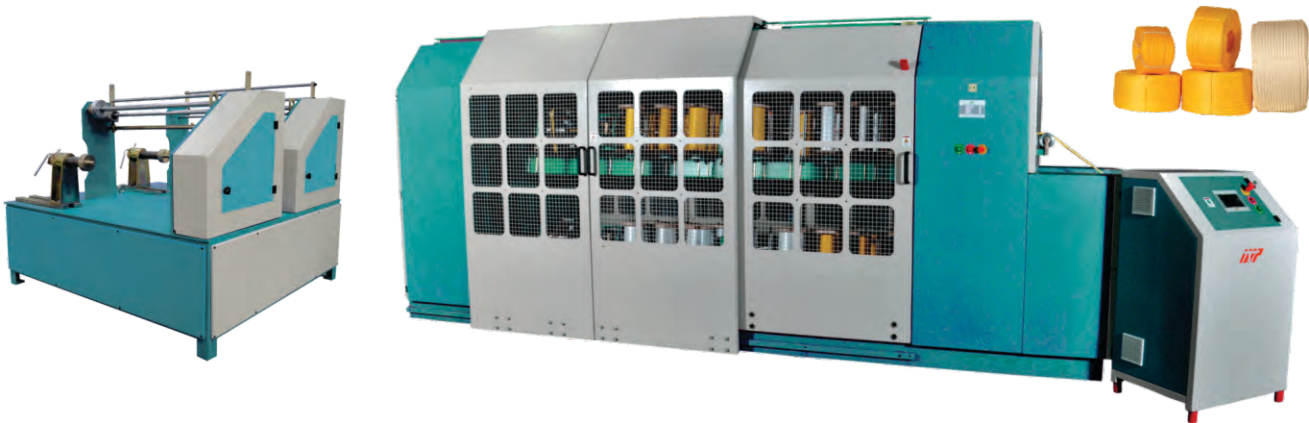
ENDLESS ROPE MACHINE ELECTRONIC MODEL

ROPE SIZE RANGE	(4 PLY)	
	PAY OFF PACKAGE	MODEL NO.
2MM TO 6MM	2 X 3 = 6	MTP/2-E-36
2MM TO 6MM	2 X 4 = 8	MTP/2-E-48
6MM TO 12MM	10 X 4 = 40	MTP/6-E-440
8MM TO 16MM	16 X 4 = 64	MTP/8-E-464
12MM TO 24MM	20 X 4 = 80	MTP/12-E-480
16MM TO 32MM	26 X 4 = 104	MTP/16-E-4104
16MM TO 44MM	40 X 4 = 160	MTP/16A-E-4160

- KEY FEATURES:**
- User friendly touch screen display with PLC control.
 - All parameters will be shown on display.
 - RPM/TPM adjustment by display.
 - Weight & Meter set point.
 - Denier & twisting calculator in display.
 - Door location warning.
 - Machine lubrication warning.
 - A.C. drive fault alarm indication.
 - 100 program memory storage facility.
 - Daily, weekly & monthly report system. (Direct save in excel format)
 - Two Station Pneumatic Coiling Head with 4 kg Take up Capacity, Power Req. 0.75 kw.
 - Wi-Fi connectivity system for computer.

- OPTIONAL FEATURES:**
- One / Two head coiling machine.
 - Digital printer attachment.
 - Ele. wire hoist for removal of final package.
 - Rope Lay S & Z.

STRANDER MACHINE CLOSER MACHINE

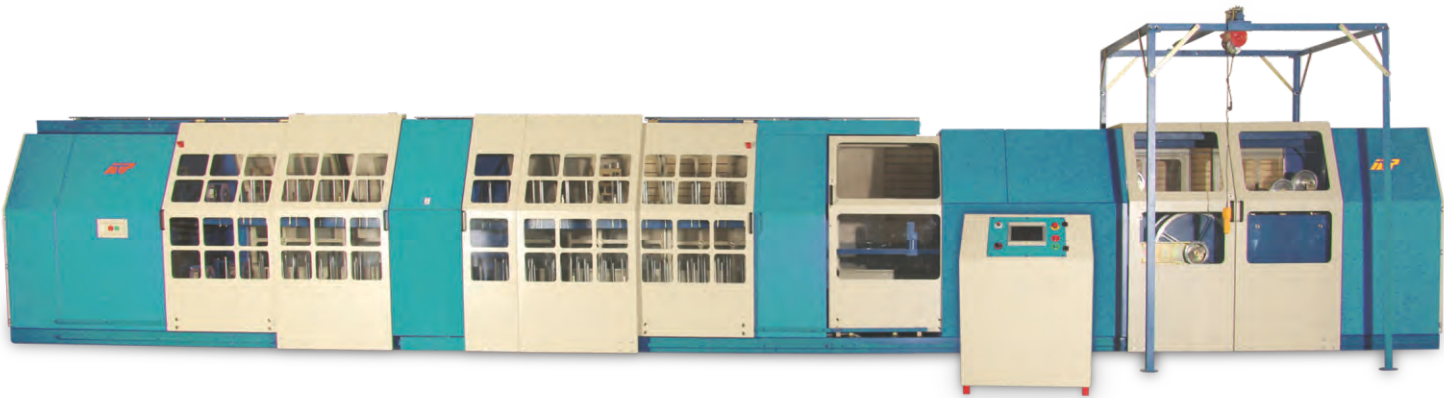


STRANDER & CLOSER MACHINE-ELECTRONIC MODEL

MACHINE DETAILS	ROPE SIZE RANGE	(4 PLY)	
		PAY OFF PACKAGE	MODEL NO.
STRANDER (2 FOR 1)	4MM TO 16MM	16 X 2 = 32	MTP/STR-4-232
STRANDER (2 FOR 1)	6MM TO 20MM	24 X 2 = 48	MTP/STR-6-248
STRANDER (2 FOR 1)	10MM TO 30MM	40 X 2 = 80	MTP/STR-10-280
STRANDER (1 FOR 1)	8MM TO 18MM	AS PER CREEL STAND	MTP/STR-8
CLOSER (1 FOR 1)	16MM TO 36MM	4 X 1 = 4	MTP/CLS-16

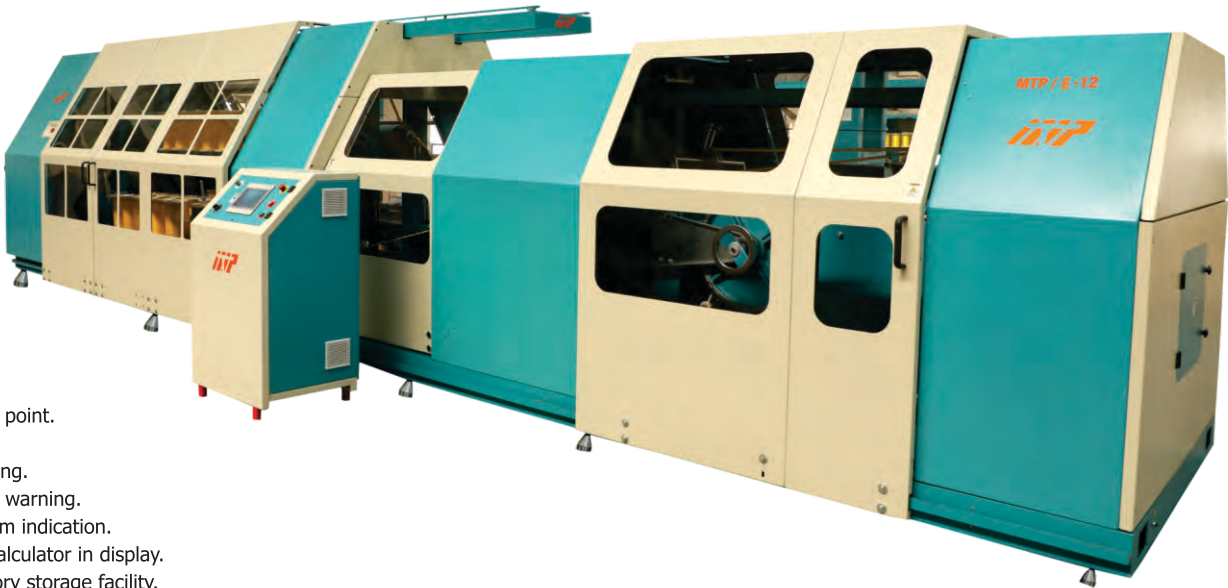
- KEY FEATURES:**
- User friendly touch screen display with PLC control.
 - All parameter will be shown by display.
 - RPM/TPM adjustment by display.
 - Weight & Meter set point.
 - Denier & Twisting calculator in display.
 - Door location warning.
 - Machine lubrication warning.
 - A.C. drive fault alarm indication.
 - 100 program memory storage facility.
 - Daily, Weekly & Monthly report system. (Direct save in excel format)
 - Wi-Fi Connectivity system for computer.

ELECTRONIC ROPE MAKING MACHINES



ROPE MACHINE - ELECTRONIC MODEL

ROPE SIZE RANGE	(3 PLY)		(4 PLY)	
	PAY OFF PACKAGE	MODEL NO.	PAY OFF PACKAGE	MODEL NO.
2MM TO 6MM	3 X 3 = 9	MTP/E-2-39	3 X 4 = 12	MTP/E-2-412
3MM TO 8MM	7 X 3 = 21	MTP/E-3-321	7 X 4 = 28	MTP/E-3-428
6MM TO 12MM	12 X 3 = 36	MTP/E-6-336	12 X 4 = 48	MTP/E-6-448
8MM TO 16MM	16 X 3 = 48	MTP/E-8-348	16 X 4 = 64	MTP/E-8-464
12MM TO 24MM	20 X 3 = 60	MTP/E-12-360	20 X 4 = 80	MTP/E-12-480
12MM TO 32MM	26 X 3 = 78	MTP/E-12A-378	26 X 4 = 104	MTP/E-12A-4104
16MM TO 40MM	32 X 3 = 96	MTP/E-16-396	32 X 4 = 128	MTP/E-16-4128
16MM TO 44MM	40 X 3 = 120	MTP/E-16A-3120	40 X 4 = 160	MTP/E-16A-4160
20MM TO 54MM	50 X 3 = 150	MTP/E-20-3150	50 X 4 = 200	MTP/E-20-4200



KEY FEATURES:

- Anti twisting unit.
- Weight & Meter set point.
- Direct coiling head.
- Door location warning.
- Machine lubrication warning.
- A.C. drive fault alarm indication.
- Denier & twisting calculator in display.
- 100 program memory storage facility.
- Electrical Take up system
- User friendly touch screen display with PLC control.
- RPM/TPM & twist factor adjustment by display.
- All parameters will be shown on display.
- Feeding capstan mechanism.
- Daily, weekly & monthly report system (Direct save in excel format).
- Ele. wire hoist for removal of final package
- Wi-Fi Connectivity system for computer.
- Rope Lay S & Z.

ONLINE RING WINDER



MODEL	: MTP/ ON-RW-16/10
DENIER RANGE	: upto 17000
NUMBER OF SPINDLE	: 16 SPINDLE
SPINDLE DIA	: 24 MM
RING	: ID - 254 mm x H - 38 mm with hardened and hard chrome plated
BOLSTER	: 24 DIA niddle roller with thrust bearing
LIFT SYSTEM	: REV-FWD winch type with rail motion
LIFT MOTOR	: 1.5 Kw
SPINDLE MOTOR	: 1.5 Kw with brake for each spindle
OPERATION	: Foot switch operated
SPINDLE BELT	: Nylon flate belt
SPINDLE SPEED	: 2800 RPM (Max.)
BOBBIN SIZE	: DIA-227 X TRA-300 X ID-24
WINDING TYPE	: Parallel winding on flanged bobbin
TOTAL POWER	: 25.5 Kw
DIMENSIONS (MM)	: L-6000 X W-1100 X H-2000
WEIGHT	: 3300 Kgs Approx
RING SIZE	: As per Customer Requirement

KEY FEATURES :

- Oil Tray For Protect To Drip The Oil
- Common Design For L to R or R To L Extruder
- Inbuilt Traverse Control Box For Save The Space
- Separate Electrical Wiring For Each Position
- Single Stage Structure For Easy To Install / shift
- Ring Rail Balancing By Dead Weight
- Robust Designed Structure
- Volt Meter On Panel
- Lift Overrun Protection
- Double Emergency Switch
- Easy To Operate

OPTIONAL FEATURES :

- A.C. Drive Required For 18000 to 30000 Denier

OFFLINE RING TWISTER

KEY FEATURES:

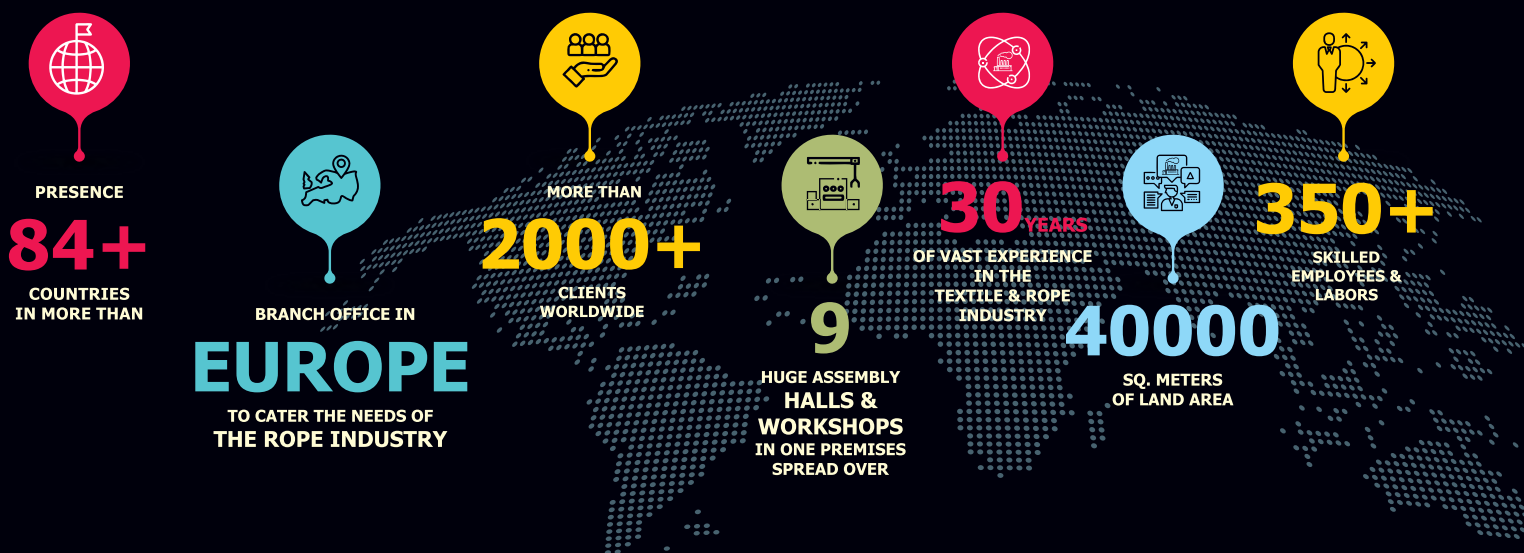
- High Speed Ring Twister Machine For Best Yarn Quality With High Productivity.
- Innovative Structure Design With Ready To Use. No Assembling Is Required.
- Tpm Setting By Hmi Display, No Need For Any Mechanical Changes.
- S & Z Twist Direction By Change Over Switch.
- Easy To Operate.
- Less Noisy, Power Cost Saving,
- Zero Vibration And Zero Maintainance

NO OF SPINDLES	: 48 Spindles
RING AND GUAGES	: 10" X 1.5" Ring And 14" Guage
RING HOLDER	: Aluminium Holder With Individual Oil Pot Provided
TWIST RANGE	: 20 Tpm To 80 Tpm
DIRECTION OF TWIST	: S & Z Direction Change Over Switch Provided
SPINDLE & BOLSTER	: Heavy Duty 24mm Dia Spindle With Bolsters of Dia. 24mm
LIFT	: 12" Lift With Ci Body, 4 Bearing Slide System Driven By 2 Hp Gear Motor
DELIVERY ROLLERS	: 75mm Dia Twin Roller With Hard Chrome And Dual Bearing System
TOP ROLLERS	: Rubber Coated Top Rollers With Lifting Handle
ROLLER STAND	: 4 Ball Bearing Stand With 2 Bottom Rollers And 1 Extra Width Rollers
TRAVERSE	: Ceramic Mounted Flat Bars For Thread Guide With 50mm Traverse By Worm And Wormwheel Gear System.
DRIVING PULLEY	: 10" Dia Alluminium Pulley For 2 Spindle Drive System
TENSION PULLEY	: 78mm Jockey Pulley With Tension Spring System, 2 Spindle Drive
CREEL	: Main Creel Mounted on Top of The Machine and Pipe Provided on Top Row For Proper Yarn Tension
SEPERATOR	: S.S. Sheet Provided For Each Spindle And Easily Removable
LAPPET	: Tilting Type Ci Body With Ss Hook Fitted.
ELECTRICAL	: Spindle Driven By 20hp Motor. 2nos 3hp Motor & Reduction Gear Box For Delivery Rollers. 1 Nos 2hp Motor With Helical Gear Box For Lifting. All Motors Synchronised With Plc Control Panel Board. TPM, RPM, Reverse & Forward Switch System Provided In Touch Screen Display Panel. All Parameters Settings By HMI Display. Overload Relay, Amps Mtr, Volts Mtr, Hour Mtr Provided In Panel. Motors-rotomotive/C & G Make. Gear Box-bonfiglioli Make.
MACHINE SIZE	: 32ft. Length X 6ft. Width X 8ft. Height.
SPINDLE SPEED	: 2800 RPM (Max.)
RING SIZE	: As per Customer Requirement

the GLOBAL PRESENCE

- | | | | | | | |
|--------------|--------------|---------------|---------------|----------------|------------|--------------|
| • ALGERIA | • COSTA RICA | • IRAN | • MALAYSIA | • POLAND | • SUDAN | • UZBEKISTAN |
| • ARGENTINA | • CZECH REP. | • IRELAND | • MAURITANIA | • PORTUGAL | • SYRIA | • VENEZUELA |
| • AUSTRALIA | • ECUADOR | • ISRAEL | • MEXICO | • RUSSIA | • TAIWAN | • VIETNAM |
| • AUSTRIA | • EGYPT | • ITALY | • MOROCCO | • RWANDA | • TANZANIA | • YEMEN |
| • BANGLADESH | • ETHIOPIA | • IVORY COAST | • MOZAMBIQUE | • SAUDI ARABIA | • THAILAND | • ZAMBIA |
| • BELARUS | • FRANCE | • KENYA | • NEPAL | • SCOTLAND | • TUNISIA | • ZIMBABWE |
| • BELGIUM | • GERMANY | • KOREA | • NETHERLANDS | • SENEGAL | • TURKEY | |
| • BOLIVIA | • GHANA | • LATVIA | • NIGERIA | • SERBIA | • U.A.E. | |
| • BRAZIL | • GREECE | • LEBANON | • NORWAY | • SLOVAKIA | • U.S.A | |
| • BULGARIA | • GUATEMALA | • LIBYA | • OMAN | • SLOVENIA | • UGANDA | |
| • CANADA | • GUINEA | • LITHUANIA | • PAKISTAN | • SOUTH AFRICA | • UK | |
| • CHILE | • HUNGARY | • MADAGASCAR | • PERU | • SPAIN | • UKRAINE | |
| • COLOMBIA | • INDONESIA | • MALAWI | • PHILIPPINES | • SRI LANKA | • URUGUAY | |

the REACH



HEAD OFFICE & FACTORY

MAHESH TWISTO TECH PVT. LTD.

Mfg. & Exporter : Extrusion Plant for PP Danline, HDPE Monofilament & PP Fibrillated Tape, Rope Making Machine & Inflow Twisters.

Plot No. 349, Phase-II, G.I.D.C., Chitra,
Bhavnagar - 364 004, Gujarat, INDIA.

Ph : +91 - 278 - 244 8857, 244 9413

Fax : +91 - 278 - 244 5851

Web : www.maheshengineers.com

M : +91 99254 92129

E : bdm@maheshengineers.com

M : +91 98251 21248

E : info@maheshengineers.com

M : +91 94284 01687

E : infomtp@maheshengineers.com

BRANCH OFFICES (AHMEDABAD)

M : +91 - 97261 93129

E : gmahm@maheshengineers.com

BRANCH OFFICE (BANGLORE)

M : +91 - 70699 93129

E : anand.kumar@maheshengineers.com

OUR OVERSEAS OFFICE

MAHESH TWISTO TECH EUROPE s.r.o.

Chelcickeho 686, Rosice, 533 51 Pardubice,
Czech Republic, Europe

E : info@mahesh-europe.com

W : www.mahesh-europe.com