

neuberger.

# profile

Company information for customers and business partners



## Automatic. Efficient.

Project: LEVELZ Düsseldorf | Visualisation: Formtool, Anton Kolev

Building automation | Room automation | Clean room and process engineering [from a single source](#)

## Contents

<b>Neuberger Gebäudeautomation - quality, passion and reliability .....</b>	<b>3</b>
<b>Your customised solution - from a single source .....</b>	<b>6</b>
<b>Range of services .....</b>	<b>8</b>
Building automation .....	8
Room automation .....	9
Clean room technology .....	10
Process engineering .....	11
<b>Product portfolio .....</b>	<b>12</b>
Building and room automation .....	12
Monitoring and clean room systems .....	14
Building control and management systems .....	16
<b>Electronics production and switchboard construction – flexible made by Neuberger .....</b>	<b>18</b>
<b>Automation solutions of the future - thinking about tomorrow today .....</b>	<b>20</b>
<b>Services - personal, fast, competent .....</b>	<b>21</b>
<b>Our references - from small to large projects .....</b>	<b>22</b>

---

## Neuberger Gebäudeautomation. Quality, passion and reliability.

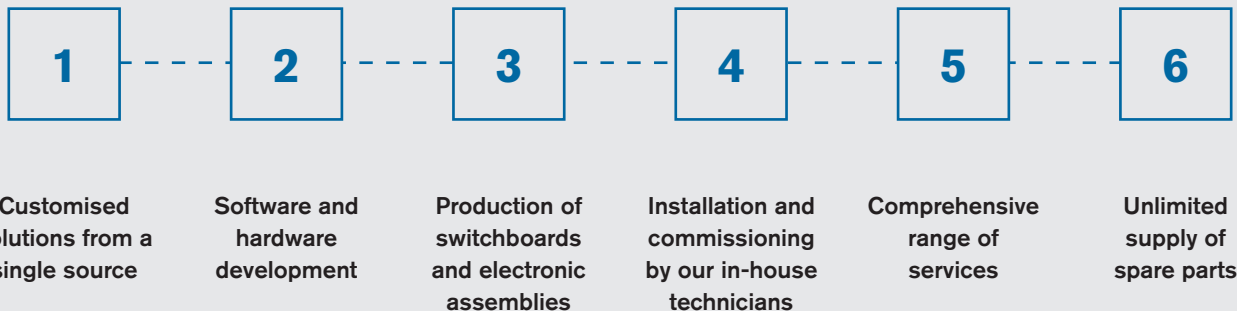
Since it was established in 1968, Neuberger Gebäudeautomation GmbH has become a leading supplier of building automation, room automation, clean room technology, and process technology solutions. Neuberger is synonymous with quality, passion and sustainability.

We have been part of the Weishaupt Group since 1995. This corporate group comprises Max Weishaupt GmbH in Schwendi and Baugrund Süd Gesellschaft für Geothermie mbH in Bad Wurzach.

Around 4,300 employees are involved in all aspects of energy. Our experts in energy sourcing at Baugrund Süd, energy technology at Weishaupt, and energy management at Neuberger prioritise maximum energy efficiency in line with nature and sustainability goals. Everything from a single source!

---

## Neuberger Gebäudeautomation 6 good reasons





We employ more than 650 people at our company headquarters in Rothenburg ob der Tauber in Central Franconia and at multiple regional centers in Germany and a subsidiary in Weiningen, Switzerland.

Our company philosophy is characterised by unrivalled focus on our customers.

Neuberger is a one-stop supplier – starting with analyses and proposed solutions through to project planning and software development, and culminating in production, installation and commissioning, we are a dependable partner for all phases of your project.

The exceptional quality of our products and services makes us stand out as an experienced and invaluable partner

across several industries. In addition, GMP\* guidelines are firmly anchored in our quality management system. Our end-to-end quality assurance, comprehensive training, lifelong and unlimited spare parts supply, along with maintenance, support and a dedicated hotline, ensures fault-free operation of your plants.





We are certified in accordance with DIN EN ISO 9001 and DIN EN ISO 14001. With our automation and building management system products, we possess the system expertise necessary to develop customised solutions of the highest standard. Everything is made in Rothenburg o. d. T. to ensure supply chain security and maximum availability of all products.

Our customer base includes companies from the energy supply, healthcare, industry and research sectors, alongside companies from the pharmaceutical and laboratory sectors. We have also implemented public buildings, office buildings, swimming pools and shopping centers on several occasions.

\*GMP = Good Manufacturing Practice, as defined by the standards of the American Food and Drug Administration (FDA), is one of the strictest production guidelines in the world.



#### HEADQUARTERS

Our headquarters in Rothenburg ob der Tauber in Central Franconia serves as the hub for our development, production and administrative operations.

## Your customised solutions. From a single source.

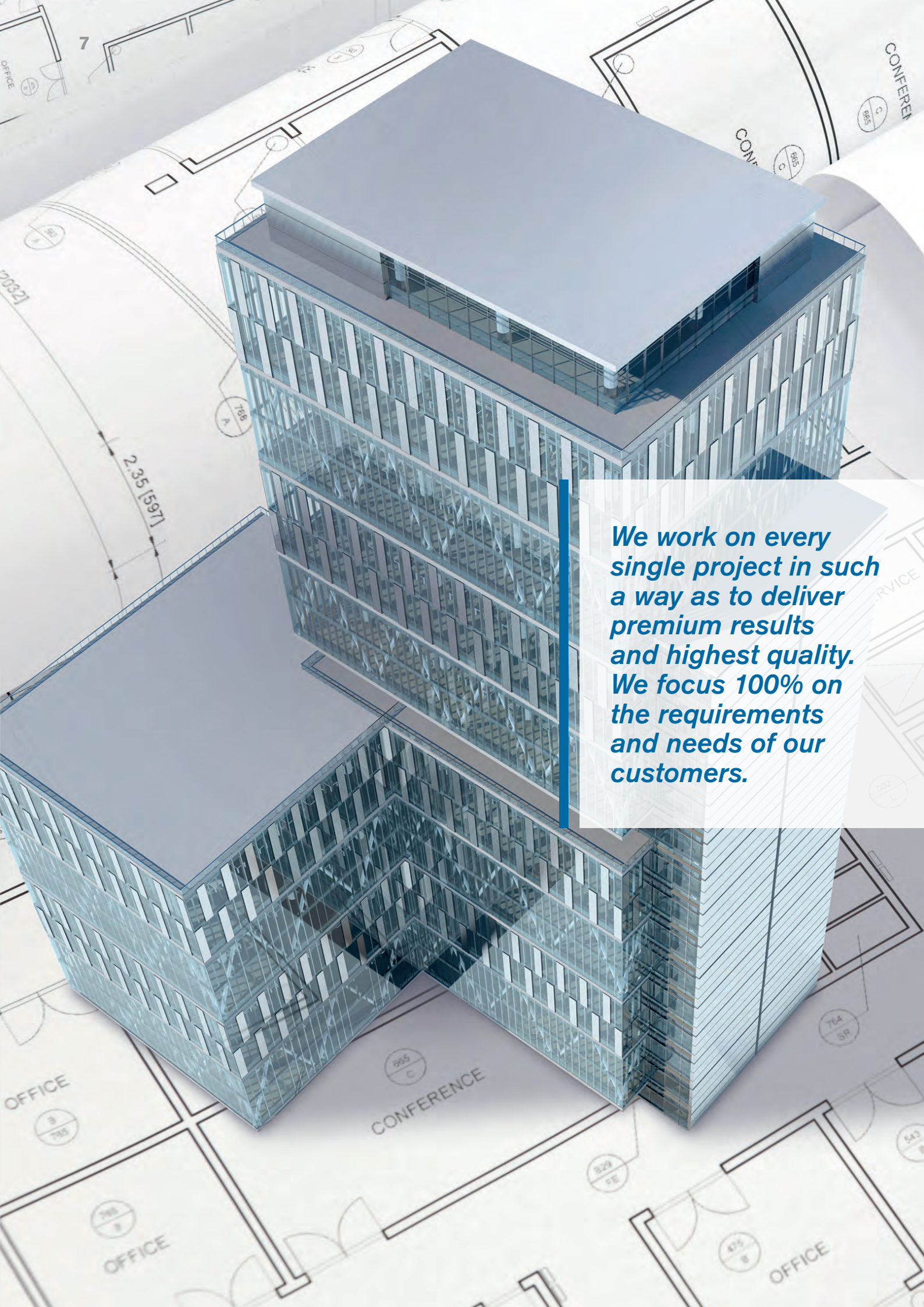
Choosing Neuberger means working with an innovative and agile full-service provider and automation technology specialist. You will be working with people who hone in on your requirements in every phase of a project.

You profit from our in-depth understanding of building technology and monitoring systems, exceptional proficiency across all facets of building services engineering, instrumentation and control and technical building plants. We meet all your needs with our comprehensive

engineering expertise, continuously trained and qualified personnel, flawless execution and reliable all-round service. This ensures that your bespoke solution ultimately establishes benchmarks in integration, efficiency, convenience, sustainability, security and scalability.







*We work on every single project in such a way as to deliver premium results and highest quality. We focus 100% on the requirements and needs of our customers.*



# Range of services.

## Modern, innovative, flexible.

### Building automation



#### Heating systems

Efficient control of energy consumption. Minimal operating costs through use of modern and intelligent solutions and energy management.



#### Ventilation and air conditioning systems

Automation of all ventilation and air-conditioning systems – flexibly to suit project requirements.



#### Refrigeration systems

Optimised operation of refrigeration plants in buildings for power generation and distribution.



#### Room automation

Modern room automation cuts costs, optimises benefits and boosts added value.



#### Lighting

Lighting control and inclusion of outdoor brightness and spectral composition in daily requirements.



#### Sun protection

Shading and blind control based on the position of the sun.



#### Smoke extraction and fire protection

Safety-oriented control and regulation of smoke extraction and fire protection systems.



#### Alarm management and fault signalling system

Guaranteed plant operability through structured alarm and fault message management.

### BUILDING AUTOMATION

All from a single source – building automation, building control, instrumentation and control, building management system and energy management.



## Room automation



### Heating and cooling

Intelligent and demand-based heating and cooling increases comfort and cuts down on energy requirements.



### Air conditioning and ventilation equipment

Automated control of temperature and fresh air based on air quality, presence and room occupancy.



### Presence

Control of room climate, lighting, shading and media technology based on presence detection..



### Temperature

Optimised temperature control of the rooms through sensor-based monitoring of air temperature.



### Lighting

Lighting control and regulation based on brightness levels and presence detection.



### Sun protection and shading

Control of sun shading and blinds based on external brightness and weather conditions.



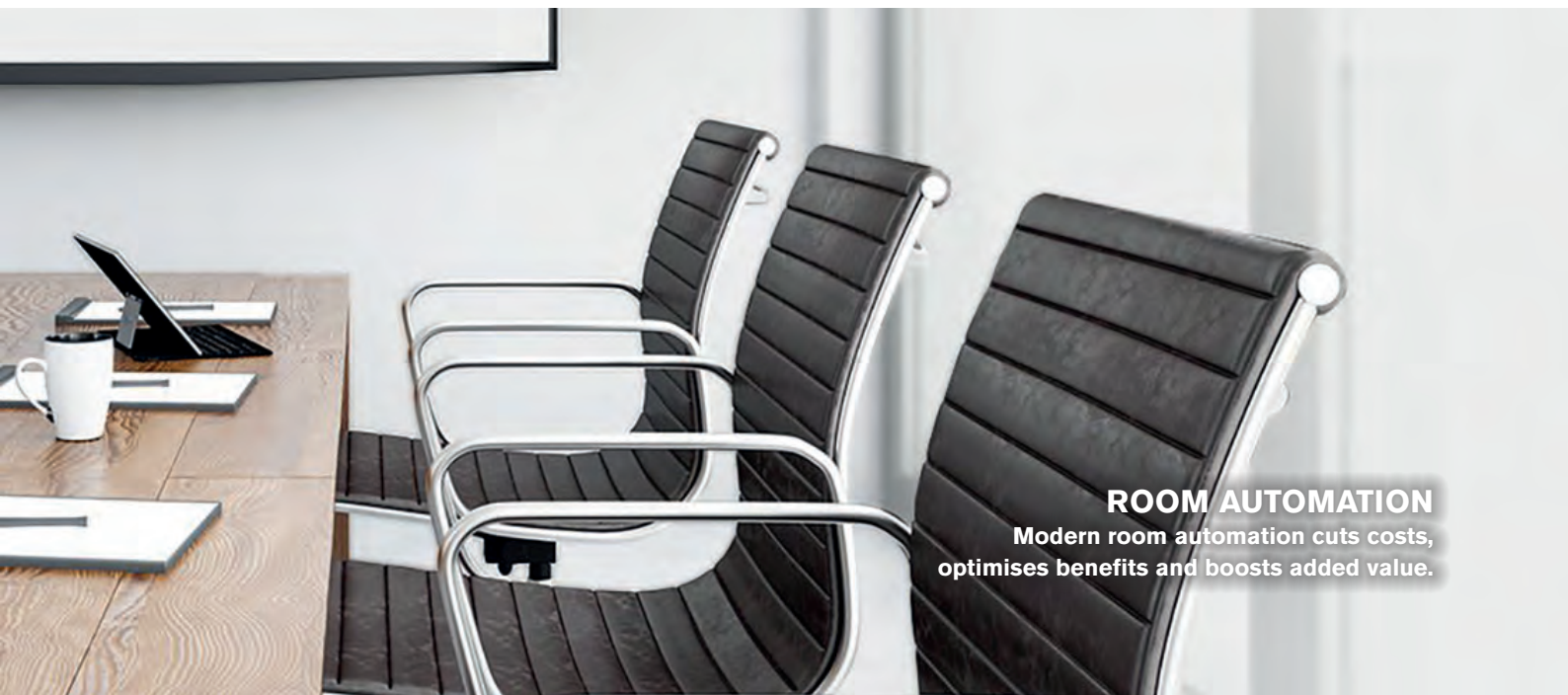
### Media equipment

Control of media, event and conference equipment based on predefined scenarios.



### Humidity

The deliberate, sensor-controlled adjustment of relative humidity in the room has the following outcomes: A positive effect on comfort and health.



## ROOM AUTOMATION

Modern room automation cuts costs, optimises benefits and boosts added value.

## Clean room technology (pharmaceuticals, laboratories, healthcare, hospitals, pharmacies, etc.)



### GMP monitoring

The systems were developed in accordance with GMP guidelines and satisfy all the requirements of FDA 21 CFR Part 11.



### Mapping

Ensuring product quality in storage, refrigeration and freezer units through the assessment of temperature distribution, identifying cold and hot spots.



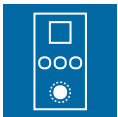
### Sensors

Sensor technology tailored to each application and customer-specific needs, regardless of manufacturer.



### Calibration

On-site or factory calibration with the latest measuring technology across the entire measurement range.



### Clean room terminals, clean room lighting and signal lights

For the operation, visualisation, signalling and monitoring of clean rooms.



### Validation and qualification

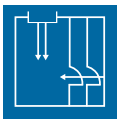
Documentation preparation and implementation of qualification compliant with GMP guidelines.

## CLEAN ROOM TECHNOLOGY

Neuberger's instrumentation and control technology and monitoring systems guarantee GMP-compliant, qualified and secure operation.







#### Airlock control

Control of personnel and/or material locks to ensure the safety of employees, products and the environment.



#### Control of room conditions

Control of all technical building plants and a range of conditions in clean rooms.



#### Analyses and reports

Customised evaluation and presentation of quality-relevant data.

### Process engineering



#### Swimming pools

Monitoring of water quality and automation of pool water technology, providing operators with maximum ease of use.



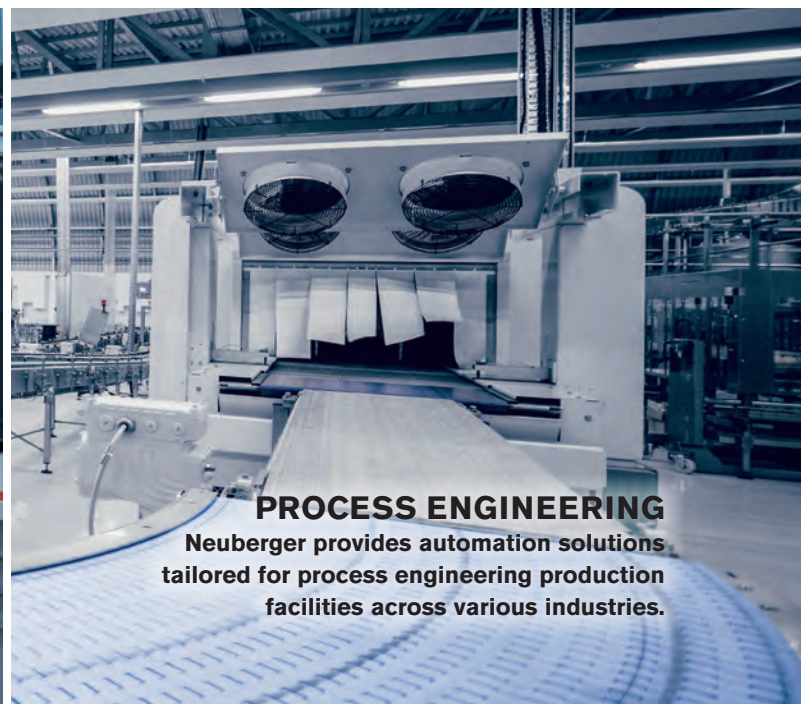
#### Sewage treatment plants

Automation of plant technology for environmentally friendly water treatment.



#### Brewing equipment

Automation of all brewing technology systems.



### PROCESS ENGINEERING

Neuberger provides automation solutions tailored for process engineering production facilities across various industries.

# Building and room automation. Flexible, future-proof, intelligent.

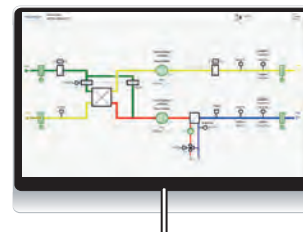
IoT (Internet of Things)  
e.g. access control systems,  
room booking and workplace  
booking systems, etc.



Remote maintenance / diagnostics /  
alarms via SMS, email, web browser



Building control and  
management system  
**ProGrafNT**



Building control and  
management system  
**ProGrafNT client / Web client**



Portal solution



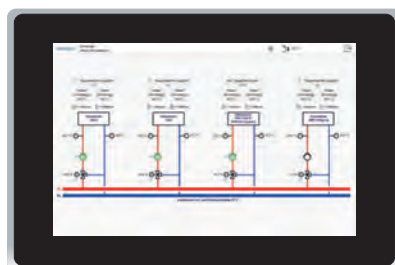
Higher-level  
systems

FM systems  
Fire alarm systems  
Intruder alarm systems  
Access control  
Lighting  
...

Internet / Intranet, Ethernet TCP/IP,

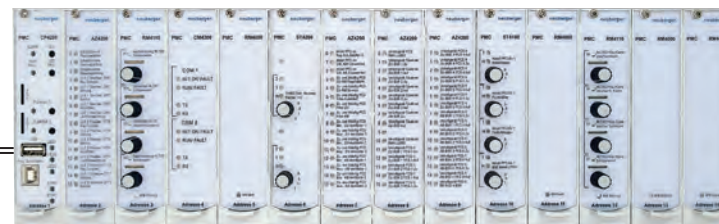
BACnet/IP, OPC, ...

OPERATOR UNITS  
FOR PROGRAMMABLE  
LOGIC CONTROLLERS



e.g. Touch Panel TP42XX

PROGRAMMABLE LOGIC CONTROLLERS



PMC2 Programmable Logic Controller 4000



PMC2 Programmable Logic Controller 6000

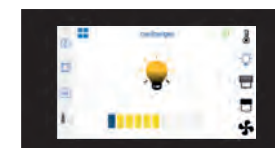


PMC2 Compact Programmable Logic Controller DR4200

OPERATOR UNITS FOR  
ROOM AUTOMATION SYSTEMS

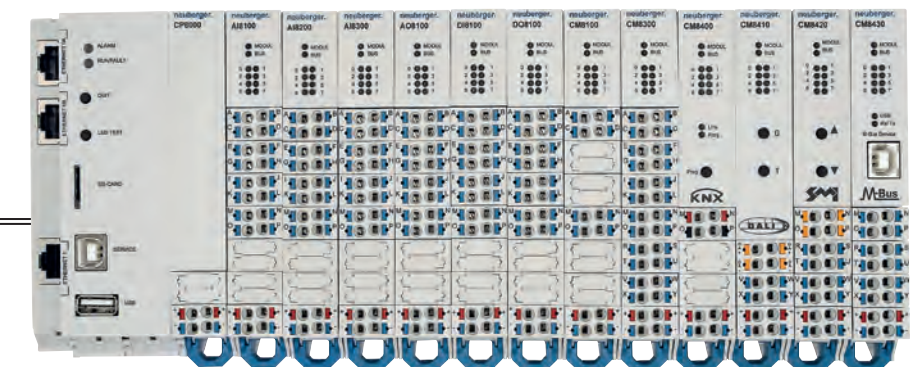


e.g. RoomPanel RP8100



e.g. RoomController RC8100

ROOM AUTOMATION SYSTEM



Room automation system Open.Room 8000



# Monitoring and clean room systems. GMP-compliant, secure, reliable.

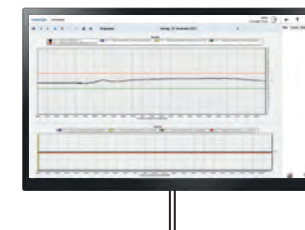
Remote maintenance / diagnostics / alarms  
via SMS, email, web browser



Monitoring server /  
building management system  
**ProGrafNT (GMP)**



Building control and management system  
**ProGrafNT client / Web client**



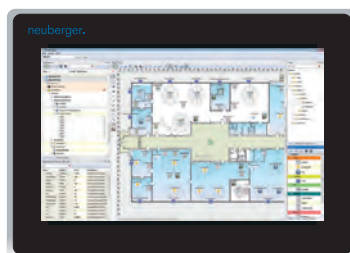
Higher-level systems

Historical data  
Analyses  
Reports  
MES systems  
etc.

Internet / Intranet, Ethernet TCP/IP,

BACnet/IP, OPC, ...

OPERATOR UNITS FOR  
PROGRAMMABLE LOGIC  
CONTROLLERS

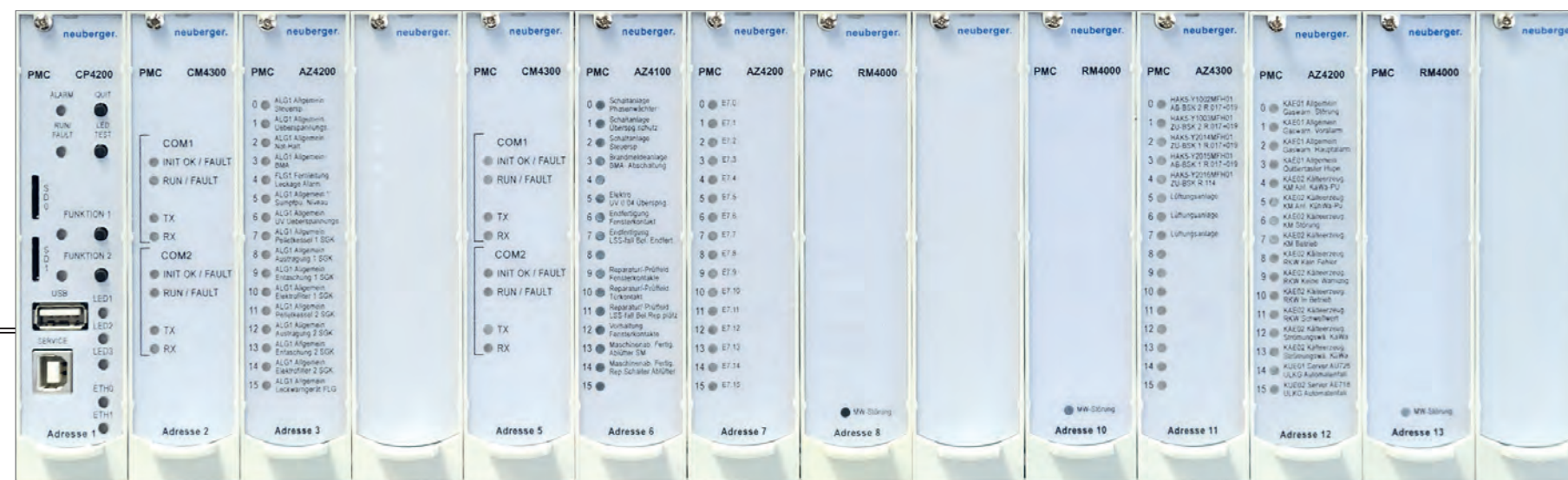


e.g. Touch Panel TP42XX



e.g. RoomPanel RP8100

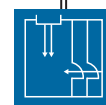
PROGRAMMABLE LOGIC CONTROLLERS / MONITORINGSYSTEM



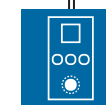
PMC2 Programmable Logic Controller 4000



GMP-Monitoring



Airlock and access  
control systems



Clean room  
terminals



Clean room  
lights



Sensors

GMP SERVICES



## Mapping

Ensuring product quality in storage,  
refrigeration and freezer units.



## Calibration

On-site or factory calibration always  
using state-of-the-art measurement  
technology.



## Validation and qualification

Documentation preparation and  
implementation of qualification.



## Training

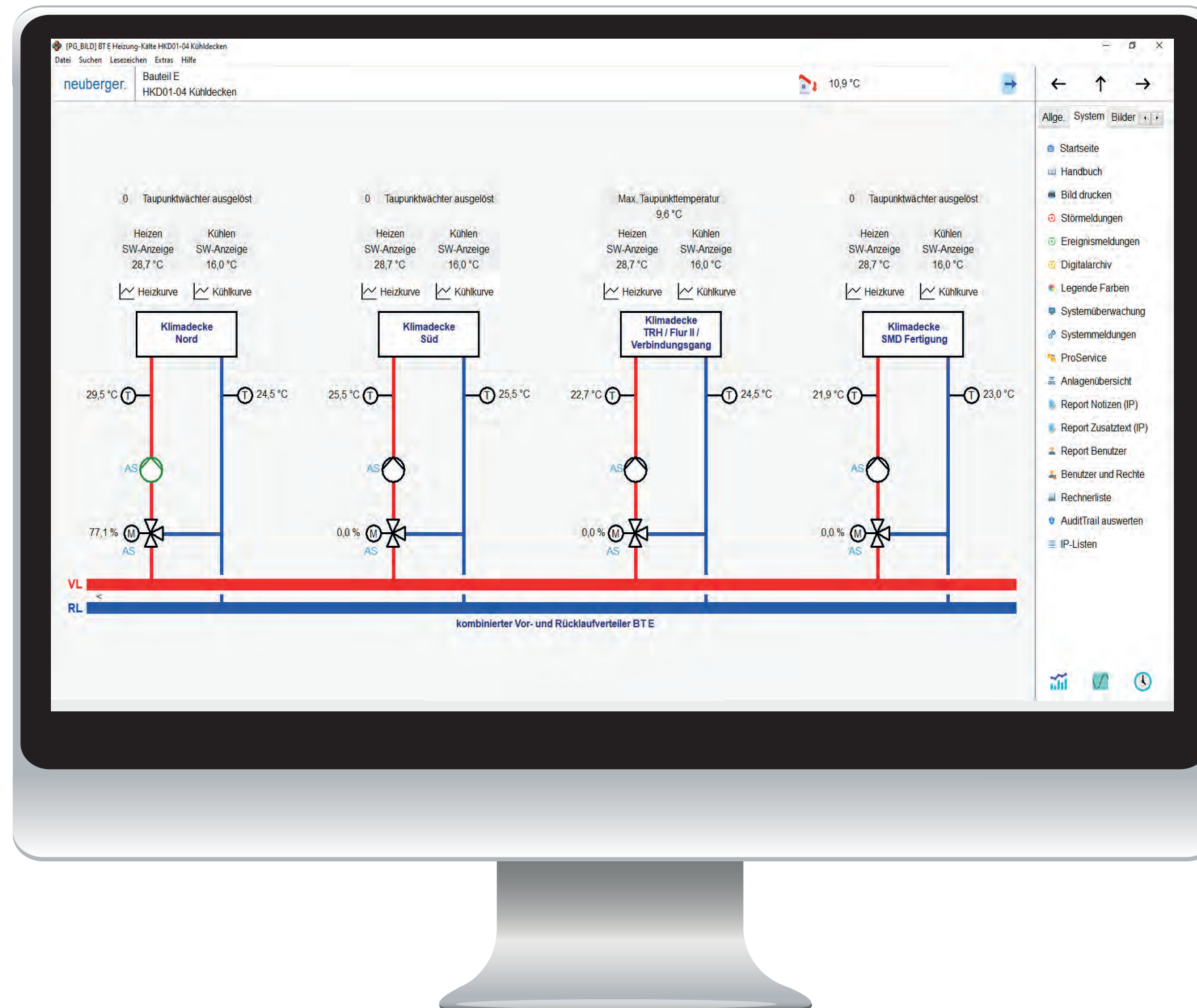
Seminars and training sessions  
focused on practical application,  
tailored to specific target groups.

## Building control and management system. ProGrafNT - neutral, open, flexible.

**ProGrafNT** is Neuberger's intuitive building control and management system for monitoring, operating and visualising technical building plants of all sizes.

The use of open interfaces guarantees a high degree of flexibility in the visualisation of a wide variety of plants. With graphical displays, numerous evaluation options and comprehensive logging across all automation levels, operators and facility management can maintain an overview at all times. The system is infinitely scalable and can be seamlessly tailored to fit various buildings and properties.

**ProGrafNT** also satisfies the stringent requirements of the United States Food and Drug Administration (FDA) and can therefore also be used as a GMP monitoring system in multiple scenarios in accordance with 21 CFR Part 11. Applications in clean room environments, such as pharmaceutical and laboratory technology, or in data centers, pose no issue thanks to secure user administration and an extensive audit trail.



By choosing **ProGrafNT**, you are selecting a control and management system crafted by Neuberger that boasts exceptional durability and sustainability thanks to its cross-generational use and continuous further development.

- Universal building management system with open interfaces
- Can also be used as a monitoring system within GMP-regulated environments
- Simple integration of third-party and higher-level systems
- Intuitive and plant-orientated operating concept
- Licence model without information point restriction
- Future-proof system
- Historical database / trending
- Event and alarm management
- „Ready for Management-GLT“ – unrestricted choice of system architecture
- Extreme sustainability and durability through intergenerational use
- Wide range of software options
- Room configuration in room automation using RoomDesigner
- Energy management with ProEnergie according to DIN EN ISO 50001
- Control and regulation with ProWetter based on weather data
- Needs-based access management with ProZutritt



# Electronics production and switchboard construction.

## Flexible solutions made by Neuberger.

Since its establishment in 1968, the production of switchboards has remained one of Neuberger's core competencies, making it an essential component of our product portfolio.

Continuously developed and expanded by highly specialized experts, our product portfolio ensures maximum functional reliability, durability, sustainability and high availability.

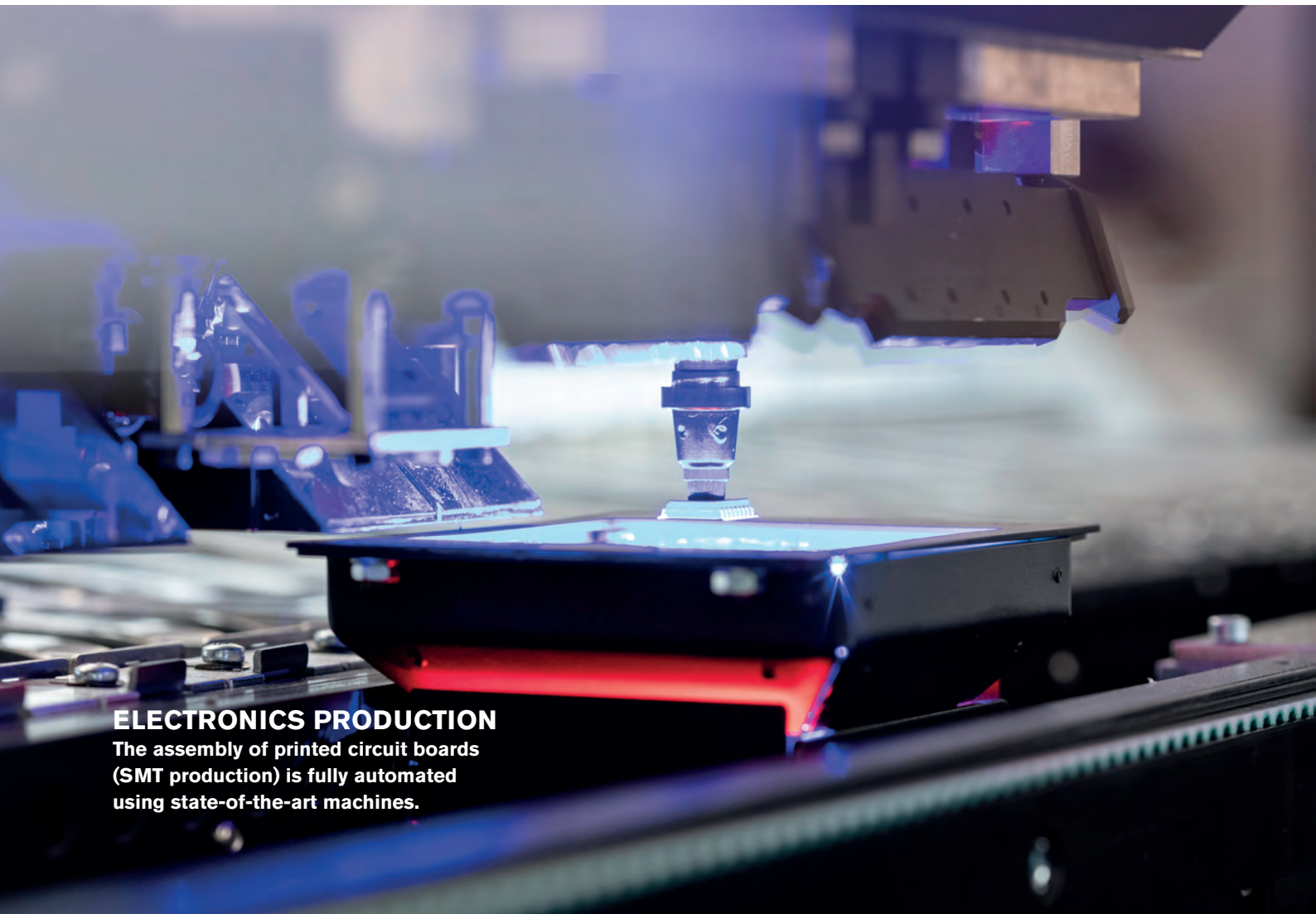
### State-of-the-art electronics production

We manufacture electronic assemblies and switchboards in our new, ultra-modern electronics production facility measuring almost 3,500 m<sup>2</sup>. Utilizing the latest machinery, predominantly fully automated on a highly efficient production line, we manufacture products daily to meet the most stringent functionality and quality standards.

- In-house electronics production
- State-of-the-art machinery
- Fully automated SMT production
- 100% inspection and visual inspection of all produced assemblies
- Climatic chamber for burn-in tests
- In-house EMC test laboratory
- Unlimited spare parts supply for all products manufactured in-house
- Maximum delivery capability

### ELECTRONICS PRODUCTION

The assembly of printed circuit boards (SMT production) is fully automated using state-of-the-art machines.



### Flexible switchboard construction

All switchboards are designed and planned using the latest software tools. If special enclosures or customer-specific designs are required, these can easily be produced in our own metalworking center.

Our highly specialized personnel, who undergo regular training, undertake

project-specific wiring and outfitting of stand panels, wall-mounted cabinets and axis controllers. Finally, all plants are tested in our in-house test center before delivery.

This helps us to achieve optimal results and maximum performance in manufacturing and delivering over 2,600 switchboards and room automation distribution boards annually.

- Maximum flexibility in switchboard production
- Switchboard planning and design with the latest software, e.g. E-Plan, AutoCAD, Autodesk Revit, etc.
- In-house metal production and metalworking shop with fully automated sheet metal parts processing
- Highly specialised wiring teams that undergo regular training
- In-house test center
- 100% individual testing



### PLANT CONSTRUCTION UND SWITCHBOARD MANUFACTURING

From the plan to the finished switchgear, everything comes from a single source by Neuberger.



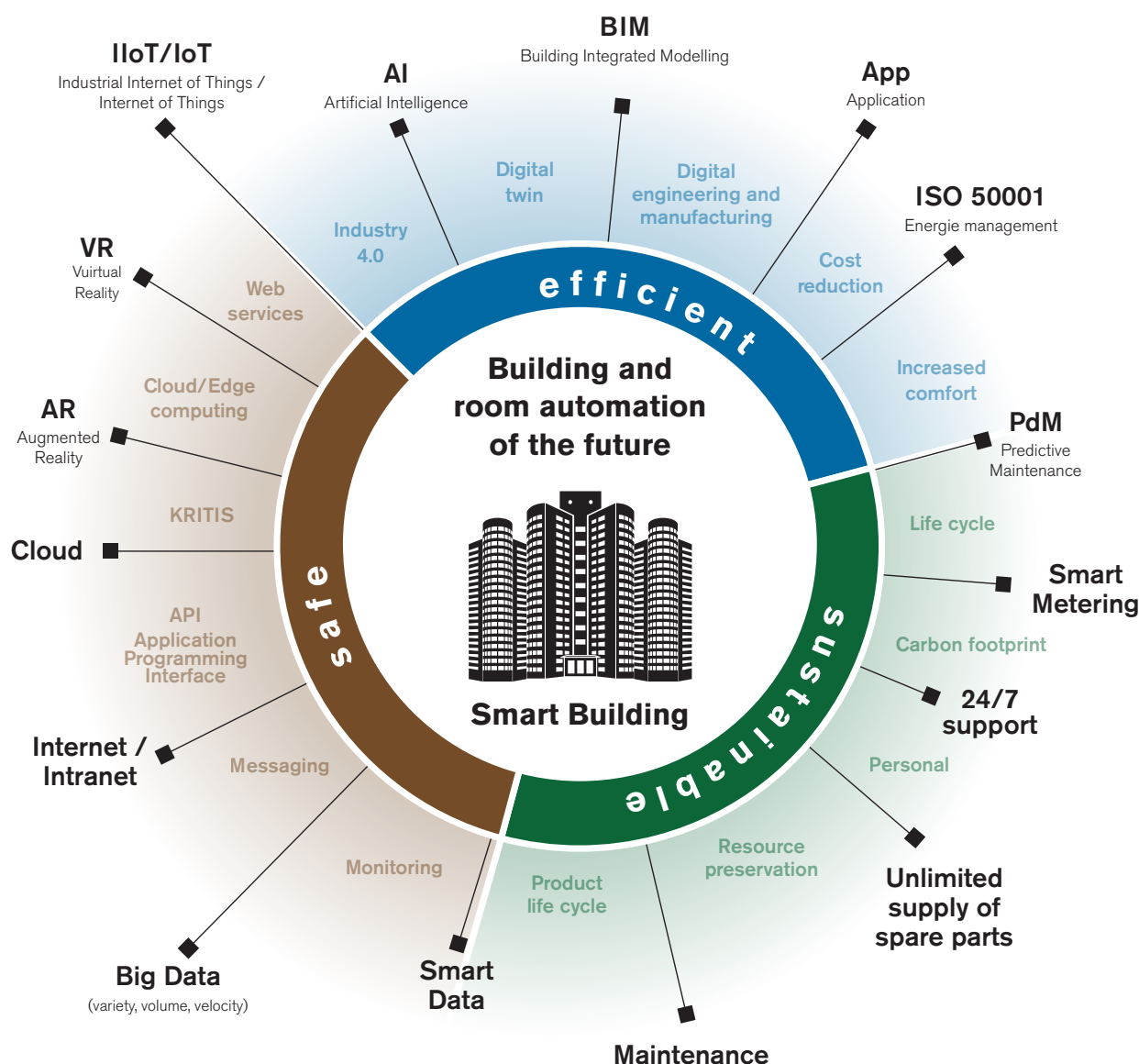
# Automation solutions of the future.

## Thinking about tomorrow today.

The potential offered by the use of new technologies is extraordinary. This is why we are already tackling the tasks and challenges of tomorrow's automation on a daily basis.

New tasks and challenges present fresh opportunities and possibilities for us to maintain adaptability amidst dynamically changing economic and competitive situations.

This is why we are already using smart and new technologies that reliably guarantee the efficient, sustainable and safe operation of plants and buildings.



## Services.

### Personalized, fast, competent.

At Neuberger, just like every company within the Weishaupt Group, we adhere to the principle: **“The value of a product or service is measured by the quality of its customer support”.**

In line with this principle, we are committed to guaranteeing maximum reliability and functional safety for every project we manage.

Our customers can rest assured that none of Neuberger's products will be discontinued, and that spare parts will be available for life. We also provide support 24 hours a day, 7 days a week.



#### Spare parts supply

We guarantee an **unlimited supply of spare parts** for all products that we manufacture in-house.



#### 24/7 service

Our dedicated service team **is on hand 24/7**, every day of the year, to provide personal assistance with technical support, plant activation or emergencies.



#### Maintenance

Our specialized maintenance team ensures swift, skilled and reliable **plant maintenance and optimization**.



#### Training

Experience the advantage of hands-on **seminars and training** sessions, conducted at our own training center or through external programs.



# Our references.

## All shapes and sizes.

Our experience spans a broad spectrum of tasks for numerous reputable companies both in Germany and internationally. Our proficiency and track record in building and room automation encom-

pass projects of all sizes, from kindergartens to partially automating mid-sized businesses, up to full-scale project planning and execution of significant contracts like the European Central

Bank in Frankfurt am Main.

**Our aim is to achieve customer satisfaction.**

### Pharmacies

Aschaffenburg, Berlin, Bruchsal, Erfurt, Heidelberg, Kassel, Magdeburg, Nördlingen, Schwäbisch Gmünd, Ravensburg, Ulm, etc.



Kugler Feinkost GmbH, Parsdorf

### Shopping centers, retail and commerce

Aarepark (CH), Bauhaus DIY outlets, Edeka supermarkets, Kö-Galerie shopping center, Main-Taunus-Zentrum, Media-Märkte, Outletcity Metzingen, etc.



Stadtwerke Crailsheim GmbH, Crailsheim

### Power supply

e.g. municipal utilities in Bad Windsheim, Crailsheim, Frankfurt am Main, Munich, Münchenstein (CH), Rothenburg o.d.T., Šabac (SRB), Sindelfingen, Wertheim, etc.



Sparkasse, Ulm

### Research and science

Max-Planck und Fraunhofer-Institute, e.g. in Erlangen, Garching, Göttingen, Kaiserslautern, Mainz, Mülheim an der Ruhr, Munich



The Chedi Andermatt, Switzerland

### Hotels and resorts

Augsburg, Andermatt (CH), Berlin, Cottbus, Dinkelsbühl, Dortmund, Frankfurt, Hohenems (AUT), Horw (CH), Munich, etc.



attocube systems AG, Haar

### Industry

A range of established companies at home and abroad



Max Weishaupt GmbH, Schwendi

### Hospitals and clinics

Augsburg, Bad Mergentheim, Baden (CH), Berlin, Heidelberg, Kitzingen, Lohr am Main, Lucerne (CH), Munich, Ravensburg, Tübingen, Ulm, etc.



Klinikum Dritter Orden, Munich

### Kindergartens

Bad Neustadt an der Saale, Braunschweig, Bad Wurzach, Erkelenz, Feldkirchen, Friedberg, Nuremberg, Sonthofen, Vaihingen an der Enz, Wiesbaden, etc.



Mercedes-Benz Museum, Stuttgart

### Museums and art galleries

Berchtesgaden, Friedrichshafen, Grefrath, Hamburg, Hamm, Heilbronn, Munich, Regensburg, Schwäbisch Hall, Stuttgart, Ulm, etc.



### Public institutions and administrations

e.g. district offices, savings banks, credit unions, insurance companies, municipal administrations, etc.



Wasserburger Arzneimittelwerk GmbH, Wasserburg

### Pharmaceutical companies and laboratories

Many well-known firms from the fields of medical technology, research and manufacturing



Allergopharma GmbH & Co. KG, Reinbeck

### Sports and leisure facilities

e.g. sports facilities in Bad Bevensen, Halle, Laatzen, Neu-Ulm, Quickborn, Rothenburg o.d.T., Scheßlitz, Schwendi, etc.



OrangeCampus GmbH, Neu-Ulm

### Swimming, leisure and adventure pools

Einbeck, Feuchtwangen, Freilassing, Göttingen, Halle an der Saale, Itzehoe, Magdeburg, Munich, Schwäbisch Hall, etc.



### Universities

Bayreuth, Berlin, Darmstadt, Hanover, Heidelberg, Frankfurt am Main, Potsdam, Munich, Ulm, etc.



### Housing, real estate and residential complexes

Berlin, Dresden, Hamburg, Frankfurt am Main, Nuremberg, Munich, Pfäffikon (CH)



ABG FRANKFURT HOLDING GmbH, Frankfurt/Main



Neuberger  
Gebäudeautomation GmbH  
Oberer Kaiserweg 6  
DE-91541 Rothenburg o.d.T.  
Phone: +49 9861 402-0  
Fax: +49 9861 402-333  
E-Mail: [info@neuberger.net](mailto:info@neuberger.net)  
Internet: [www.neuberger.net](http://www.neuberger.net)

Neuberger  
Gebäudeautomation AG  
Im Gewerbepark 4a  
CH-8104 Weiningen  
Phone: +41 44 747 86 86  
Fax: +41 44 747 86 80  
E-Mail: [info@neuberger.ch](mailto:info@neuberger.ch)  
Internet: [www.neuberger.ch](http://www.neuberger.ch)

## All from a single source

Neuberger, established in 1968, is a highly qualified supplier of products and solutions for building automation and the pharmaceutical industry.

Neuberger has been part of the Weishaupt Group since 1995 and supplies everything from a single source – planning, products, software, installation, commissioning, maintenance and 24/7 service.

Neuberger's building automation systems are designed to optimize efficiency through the integrated management of all technical system.



Headquarters in Rothenburg ob der Tauber