




Global Company, Century HUAIGE

 Manufacturer: HEBEI HUAIGE HOISTING MACHINERY GROUP CO.,LTD

 TEL: 0086-312-8151581

 Website: www.huaigegroup.com

 Email: export@huaigegroup.com

 ADDRESS: Huaige Industrial Park, Qingyuan County, Baoding City, Hebei Prov. China

HG-S2-EN-01 PRODUCTS ALBUM



HUAIGE GROUP STAGE HOISTING EQUIPMENT



ISO9001:2015 APPROVED
HEBEI HUAIGE HOISTING MACHINERY GROUP CO.,LTD



PROFESSIONAL HOISTING TOOLS MANUFACTURER



Specializing in the research, development, production and sales services of lifting machinery equipment and ancillary products

HEBEI HUAIGE HOISTING MACHINERY GROUP CO.,LTD

Hebei Huaige Hoisting Machinery Group Co.,Ltd. started in 1980 in Hebei, China. With over 40 years of industry experience, Huaige Group has become an outstanding hoist manufacturer specializing in the chain hoist research and development, operation and safety testing. The company's main products including manual chain hoists, electric chain hoists and relevant rigging equipment, are specifically designed to satisfy the demanding needs and requests of the entertainment and mechanical handling market. Decades of our endeavour has contributed to an extremely performance-oriented, precise and safe range of products that see customer trust increasing exponentially all over the world.

As a membership of China Light Hoisting Machinery Association, Huaige Group has gained 45 patents and certificates includes GS certificate for Germany , CE certificate for Europe and ISO9001 certificate for international market and many other domestic certificates, which are the proofs of the high level safety and quality of our products. With an annual output of above 30,000 units, Huaige Group products have been exported to more than 50 countries and regions and helped us win reputation and credibility globally.

Huaige Group has automated assembly lines for lifting chains and motors. In addition, the company has introduced CNC center with CNC lathes to provide our customers with customized hoists made by intelligent production system. Full range of testing equipment including spectrum analyzer, fatigue tester, hardness tester, tensile testing machine and so on ensures the superior quality and safety of our products. In line with '2025 Made in China' initiative, we are working hard to contribute to manufacturing industry.

Huaige Group has been adhering to the philosophy of "Success on Integrity, Development and Customer Satisfaction" since the day it was founded . We will keep this in mind and provide every customer with reliable products and satisfactory services. In the near future, we believe Huaige will grow into a prestigious international company with its modern assembly lines, scientific management and product innovation.

COMPANY PROFILE



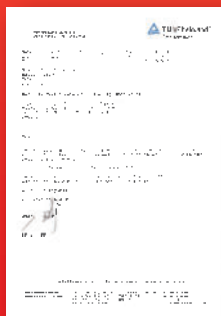
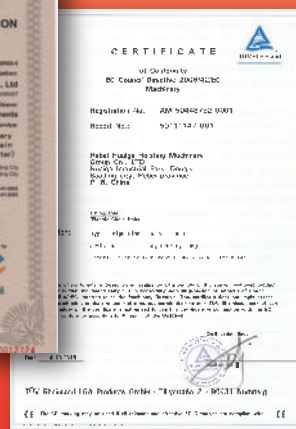
CERTIFICATE OF HONOR



40⁺
INTELLECTUAL PROPERTY

50⁺
EXPORTED TO COUNTRIES
AND REGIONS

300,000⁺
ANNUAL OUTPUT





The development history of Huaige Group

Started in 1980, 40 years of extraordinary years, 20 years of rapid development, 15 years of Huaige brand precipitation

Two design patents were authorized for the company's chain hoists. And Hebei Chuanyang Import And Export Co., Ltd. was established to develop international market

2014

Successfully obtained GS certificate and CE certificate

2013

In order to meet the demanding need of high-end market, America Zhiyou International Group Co., Ltd. was established in Colorado, USA. And set up its Guangzhou office in the same year focusing on promoting USZHIY brand

2012

Opened a branch in Shanghai and started to manufacture electric chain hoists

2011

Export License was granted

2010

Purchased a new factory in Baoding and National Industrial Production License was authorized in the same year

2009

Opened a branch in Guangzhou to tap into domestic market in the south

2005

Founded Huaige Hoisting Machinery company and registered trademark for Huaige

2004

Established Donglv Hoisting Machinery factory and started manufacturing chain hoists

1999

Provided maintenance for manual hoists

1980-1989

Started in 1980

1980



CONTENTS

ELECTRIC HOIST + ELECTRONIC CONTROLLERS

SU SERIES STAGE ELECTRIC CHAIN HOIST	01
STAGE KING SERIES STAGE ELECTRIC CHAIN HOIST	07
HGA8+ SERIES STAGE ELECTRIC CHAIN HOIST	09
HGA8-MAX PAYLOAD MONITORING ELECTRIC HOIST	11
HGA9 PRO SERIES STAGE ELECTRIC CHAIN HOIST	12
HGA9 PRO-S DOUBLE HOOK SERIES STAGE ELECTRIC CHAIN HOIST	14
EK SERIES MINI ELECTRIC CHAIN HOIST	16
HGK-C-D TOUCH SCREEN CONTROLLER	18
HGK-C-G TOUCH SCREEN CONTROLLER	19
HGK-D SYNCHRONOUS GROUPING CONTROLLER	20
HGK-G SYNCHRONOUS GROUPING CONTROLLER	21
24-WAY VERTICAL CONTROL CABINET	22
LOAD MONITORING SYSTEM(LOW VOLTAGE DUAL SCREEN)	24
LOAD MONITORING SYSTEM (HIGH VOLTAGE DIRECT CONTROL)	25
PLC CONTROL SYSTEM	27
ETHERNET PROGRAMMABLE CONTROL SYSTEM	29
INTELLIGENT ORBIT SYSTEM	30

MANUAL CHAIN HOIST SERIES+ LIFTING EQUIPMENT SUPPORTING PRODUCT SERIES

HM-A 360° CHAIN BLOCK	33
HM-B STAGE CHAIN BLOCK	34
HM-D STAGE CHAIN BLOCK	35
HOIST TROLLEY	36
BEAM CLAMP	36
SOFT WEBBING SLING FEATURES	37
STAGE WIRE ROPE WEBBING SLING FEATURES	37
FLIGHT CASE	38

ELECTRIC HOIST + ELECTRONIC CONTROLLERS



STAGE ELECTRIC HOIST

Upside hung electric hoist for project purpose and downside hung electric hoist for touring performance.



CUSTOMIZED CONFIGURATION AND DESIGN AVAILABLE

Various configuration and design options for digital controllers and hoists to meet your requirements.



HIGH SAFETY FACTOR

High quality raw materials, multiple safety guarantee, good stability and high safety.



C1 SERIES	D8 SERIES	D8 PLUS SERIES
SU-GP-0.3 C1	SU-0.5 D8	SU-0.5 D8 PLUS
SU-GP-0.5 C1	SU-1.0 D8	SU-1.0 D8 PLUS
SU-GP-0.75 C1	SU-2.0-2 D8	SU-2.0-2 D8 PLUS
SU-GP-1.0 C1		SU-2.0 D8 PLUS

PRODUCTS ON DISPLAY



D8 LV SERIES

SU-G-0.5 D8 LV
SU-G-1.0 D8 LV
SU-G-2.0-2 D8 LV

D8 PLUS LV SERIES

SU-G-0.5 D8 PLUS LV 4
SU-G-0.5 D8 PLUS LV 16
SU-G-1.0 D8 PLUS LV 4
SU-G-1.0 D8 PLUS LV 8
SU-G-2.0 D8 PLUS LV
SU-G-2.0-2 D8 PLUS LV 2
SU-G-2.0-2 D8 PLUS LV 4

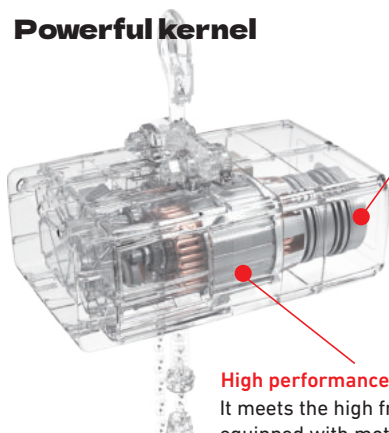


SU SERIES STAGE ELECTRIC CHAIN HOIST

Leap imagination and carry stage dreams

It is a partner of dreams, a booster of art, and with its unique design and excellent performance, it makes the stage more dynamic and dreamy.

Powerful kernel



Ultra-quiet brakes
Meets the requirements of harsh environments.

High performance electric motor
It meets the high frequency work and is equipped with motor overheating protection device.



CNC technology enhancement

simple and elegant appearance, smooth outline contour, highlighting perfect combination of modern technology and fashion.

Encoder

Optional encoder to implement digital control.



High-strength aluminum alloy shell

One-piece die-casting forming, corrosion resistance, no rust, good sealing. Can work in the rain.



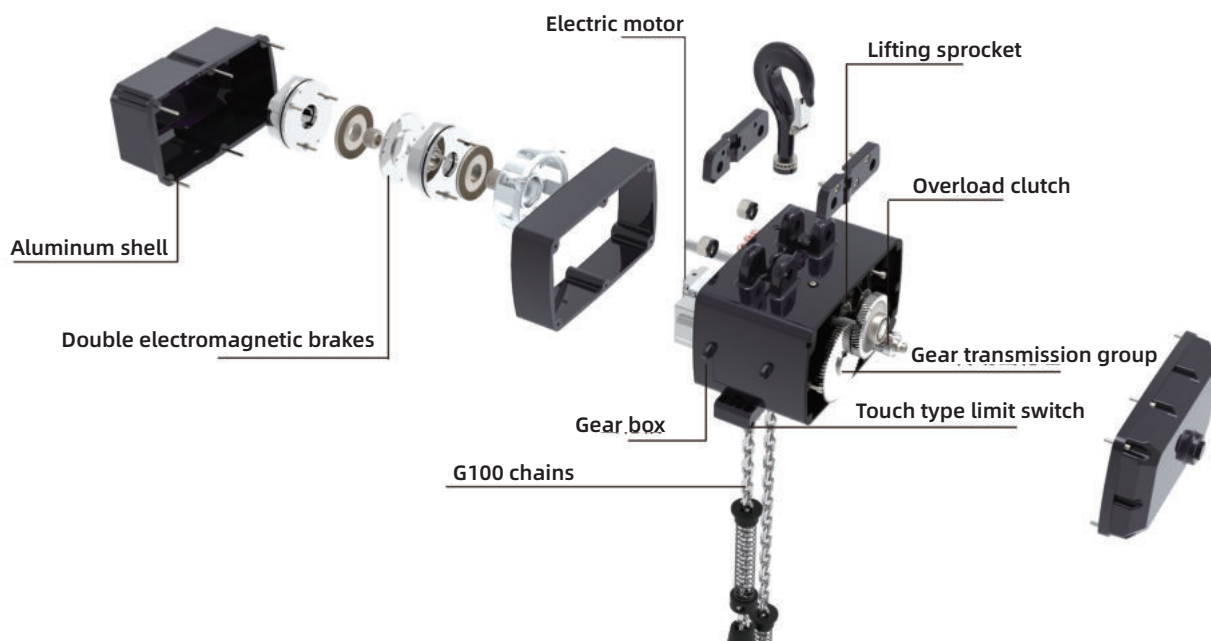
Ultra-quiet brakes



Heavy loading socket



PRODUCT STRUCTURE



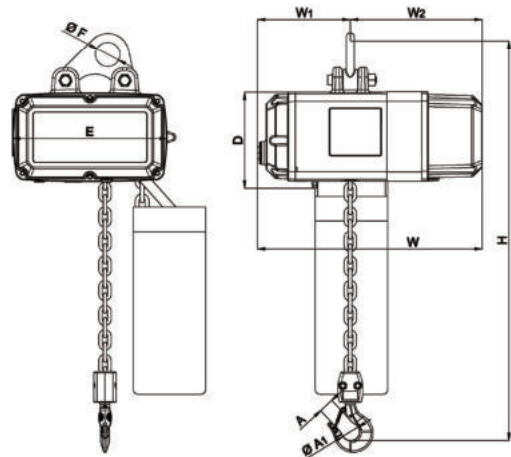
TECHNICAL PARAMETERS

Model	Capacity(kg)	Motor Power (KW)	Lifting Speed(m/min)	No.of Chain	Dia of Chain(mm)	Net Weight
SU-GP-0.3 C1	300	1.9	0-30	1	5*15	53
SU-GP-0.5 C1	500	1.9	0-19	1	7.1*21	53
SU-GP-0.75 C1	750	1.9	0-9.5	1	7.1*21	53
SU-GP-1.0 C1	1000	2.2	0-8	1	9*27	53
SU-0.5 D8	500	1.5	4	1	5*15	46
SU-1.0 D8	1000	1.5	4	1	7.1*21	48
SU-2.0-2 D8	2000	1.5	2	2	7.1*21	56
SU-0.5 D8 PLUS	500	1.5	4	1	5*15	50
SU-1.0 D8 PLUS	1000	1.5	4	1	7.1*21	53
SU-2.0-2 D8 PLUS	2000	1.5	2	2	7.1*21	60
SU-2.0 D8 PLUS	2000	2.2	4	1	9*27	54
SU-G-0.5 D8 LV	500	1.5	4	1	5*15	46
SU-G-1.0 D8 LV	1000	1.5	4	1	7.1*21	47.5
SU-G-2.0-2 D8 LV	2000	1.5	2	2	7.1*21	56
SU-G-0.5 D8 PLUS LV 4	500	1.5	4	1	5*15	50
SU-G-0.5 D8 PLUS LV 16	500	1.9	16	1	7.1*21	50
SU-G-1.0 D8 PLUS LV 4	1000	1.5	4	1	7.1*21	53
SU-G-1.0 D8 PLUS LV 8	1000	1.9	8	1	7.1*21	53
SU-G-2.0 D8 PLUS LV	2000	2.2	4	1	9*27	54
SU-G-2.0-2 D8 PLUS LV 2	2000	1.5	2	2	7.1*21	56
SU-G-2.0-2 D8 PLUS LV 4	2000	1.9	4	2	7.1*21	56

Operating Voltage: 3 phase 220v-440v (single phase 220v optional)

ELECTRIC HOIST

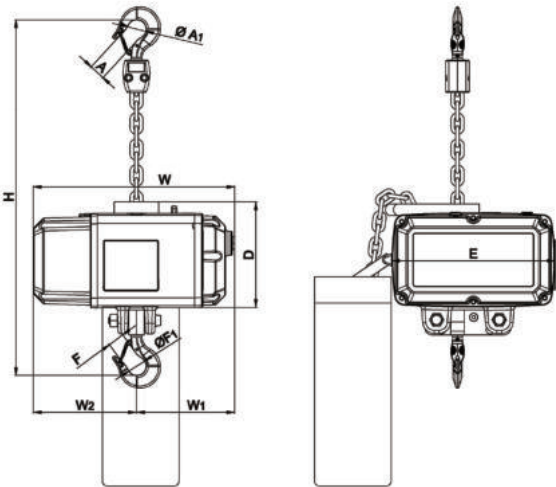
THE PRODUCT COMPLIES WITH THE GERMAN BGV C1 (IGVV SQP2) STANDARD



C1 SERIES

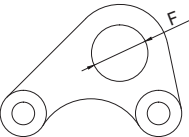
Model	F	E	W	W1	W2	D	H	A	A1
SU-GP-0.3 C1	49	320	460	190	270	190	480	25	35
SU-GP-0.5 C1	49	320	460	190	270	190	480	25	35
SU-GP-0.75 C1	49	320	460	190	270	190	480	25	35
SU-GP-1.0 C1	49	320	460	190	270	190	480	25	35

THE PRODUCT COMPLIES WITH THE GERMAN BGV D8 (DGUV VORSCHRIFT 54) STANDARD



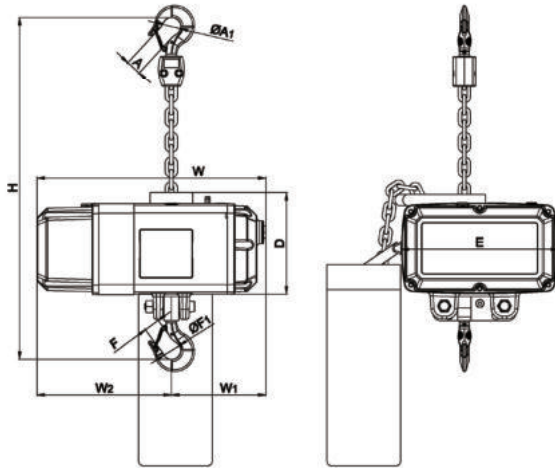
D8 SERIES

Model	F	F1	E	W	W1	W2	D	H	A	A1
SU-0.5 D8	26	39.5	320	390	190	200	200	620	25	35
SU-1.0 D8	26	39.5	320	390	190	200	200	620	26	39
SU-2.0-2 D8	Ø50	/	320	390	190	200	200	590	34	48



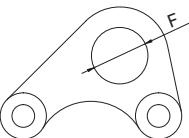
Note: Standard suspension attached to 2T electric hoist body is lifting ring.

THE PRODUCT COMPLIES WITH THE GERMAN BGV D8+ (IGVV SQP2) STANDARD



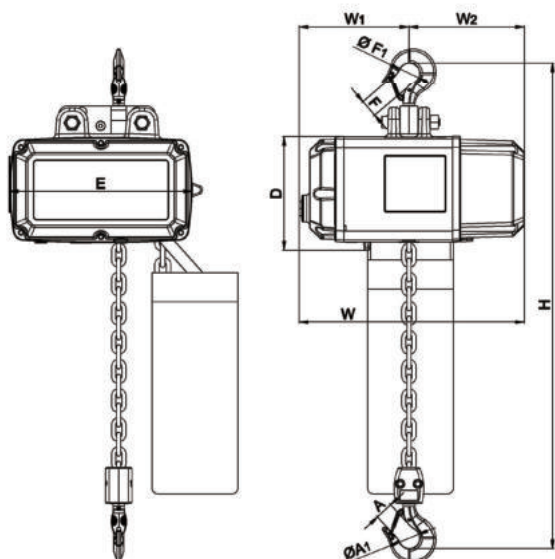
D8 PLUS SERIES

Model	F	F1	E	W	W1	W2	D	H	A	A1
SU-0.5 D8 PLUS	26	39.5	320	460	190	270	200	620	25	35
SU-1.0 D8 PLUS	26	39.5	320	460	190	270	200	620	26	39
SU-2.0-2 D8 PLUS	Ø50	/	320	460	190	270	200	590	34	48
SU-2.0 D8 PLUS	Ø50	/	320	460	190	270	200	480	34	48



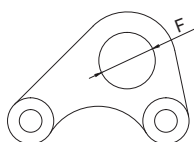
Note: Standard suspension attached to 2T electric hoist body is lifting ring.

THE PRODUCT COMPLIES WITH THE GERMAN BGV D8 (DGUV VORSCHRIFT 54) STANDARD



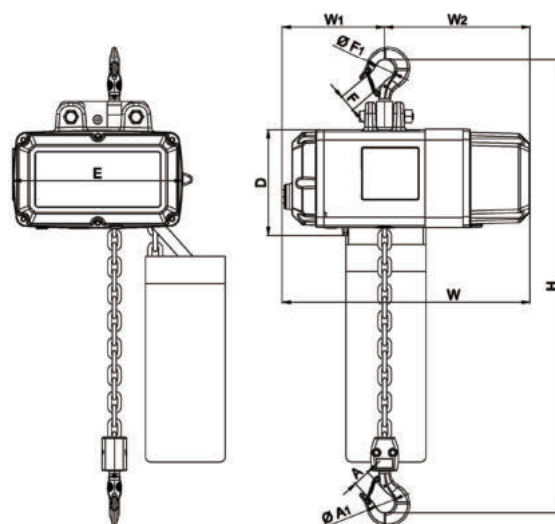
D8 LV SERIES

Model	F	F1	E	W	W1	W2	D	H	A	A1
SU-G-0.5 D8 LV	26	39.5	320	390	190	200	190	620	25	35
SU-G-1.0 D8 LV	26	39.5	320	390	190	200	190	620	26	39
SU-G-2.0-2 D8 LV	Φ50	/	320	390	190	200	190	590	34	48



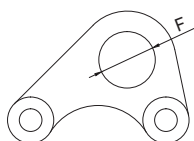
Note: Standard suspension attached to 2T electric hoist body is lifting ring.

THE PRODUCT COMPLIES WITH THE GERMAN BGV D8+ (IGVW SQP2) STANDARD



D8 PLUS LV SERIES

Model	F	F1	E	W	W1	W2	D	H	A	A1
SU-G-0.5 D8 PLUS LV4	26	39.5	320	460	190	270	190	620	25	35
SU-G-0.5 D8 PLUS LV16	26	39.5	320	460	190	270	190	620	26	39
SU-G-1.0 D8 PLUS LV 4	26	39.5	320	460	190	270	190	620	26	39
SU-G-1.0 D8 PLUS LV 8	26	39.5	320	460	190	270	190	620	26	39
SU-G-2.0 D8 PLUS LV	Φ50	/	320	460	190	270	190	480	34	48
SU-G-2.0-2 D8 PLUS LV 2	Φ50	/	320	460	190	270	190	590	34	48
SU-G-2.0-2 D8 PLUS LV 4	Φ50	/	320	460	190	270	190	590	34	48



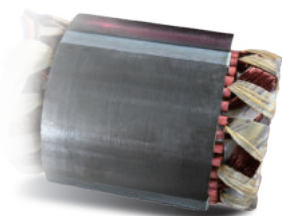
Note: Standard suspension attached to 2T electric hoist body is lifting ring.

STAGE KING SERIES

STAGE ELECTRIC CHAIN HOIST

Light luxury appearance, surging power

Aluminum alloy integrated shell, matte black design, light luxurious appearance, small size, adaptable to various stages, eight models for your more options.



Lifting motor

Pure copper motor coil, powerful and powerful.

electro-magnetic brake

When the power is cut off, it will stop immediately, so the braking safety can be guaranteed when the goods are lifted.



Clutch

Dry clutch friction pads are used
The clutch is integrated into the rotor shaft, and the clutch does not slip after wearing, ensuring safety.



Protection grade IP66

Aluminum alloy integrated shell, sturdy body, compact structure, can work in the rain.



Helical gear transmission

Gears made of high strength alloy steel with accuracy grade 6, operating noise <60db.

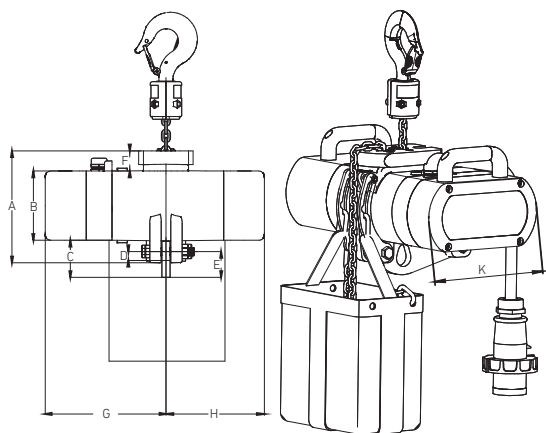


Small dimension and great strength

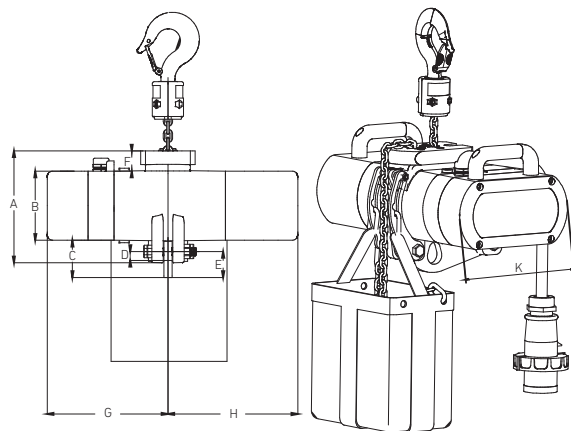
You can hold it by only one hand. Small size and light weight.
A real breakthrough for previous old hoist design, greatly reducing its overall size.

D8 320 Outline dimension is only: 321.5*195*101.5 mm.

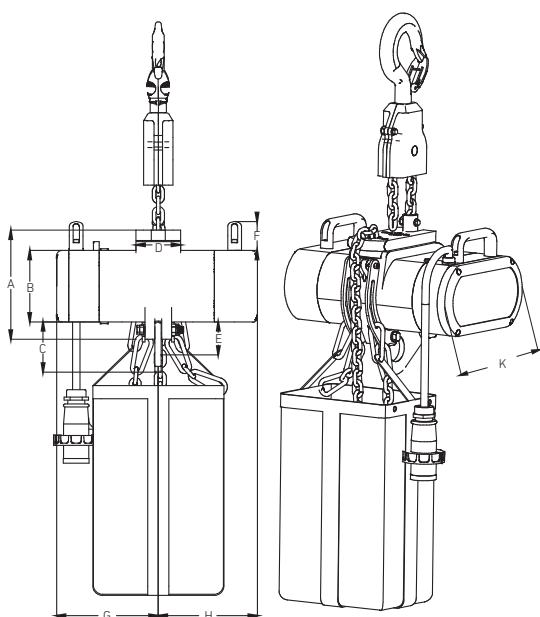




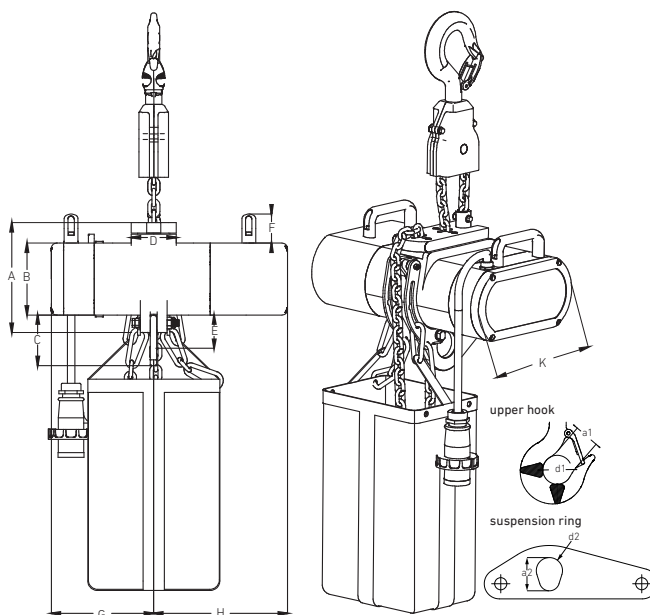
D8 320 D8 1000



D8 320(2Br) D8 PLUS 250 D8 1000(2Br) D8 PLUS 1000



D8 2000



D8 2000(2Br)

Model	A	B	C	D	E	F	G	H	K	a1	d1	a2	d2
D8 320	165	101.5	54.5	13	38	30	177	144.5	195	30.5	35.5	33	R13
D8 320(2Br)	165	101.5	54.5	13	38	30	177	190.5	195	30.5	35.5	33	R13
D8 1000	208	136	96	33	50	39	253	190	260	34	40	φ50	/
D8 1000(2Br)	208	136	96	33	50	39	253	253	260	34	40	φ50	/
D8 2000	208	136	96	85	46	55	194	190	260	39	49	50	R49
D8 2000(2Br)	208	136	96	85	46	55	194	253	260	39	49	50	R49
D8 PLUS 250	165	101.5	54.5	13	38	30	177	190.5	195	30.5	35.5	33	R13
D8 PLUS 1000	208	136	96	33	50	39	253	253	260	34	40	φ50	/

Model	Capacity(kg)	Motor Power (KW)	Lifting Speed(m/min)	No.of Chain	Dia of Chain(mm)	Net Weight
D8 320	320	0.22	4	1	4*12	13.5
D8 320(2Br)	320	0.22	4	1	4*12	14.5
D8 1000	1000	0.75	4	1	7.1*21	26.5
D8 1000(2Br)	1000	0.75	4	1	7.1*21	31
D8 2000	2000	0.75	4	2	7.1*21	35.5
D8 2000(2Br)	2000	0.75	4	2	7.1*21	40
D8 PLUS 250	250	0.22	4	1	4*12	14.5
D8 PLUS 1000	1000	1.1	4	1	7.4*21	31

Note: D8 320 D8 320 (2Br) D8 PLUS 250 No lifting handle

Operating Voltage: 3 phase 220v-440v (single phase 220v optional)

HGA8+ SERIES STAGE ELECTRIC CHAIN HOIST

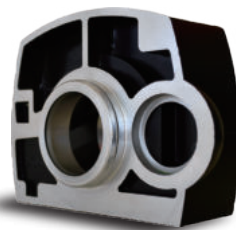


Worry-free load-bearing and easy lifting

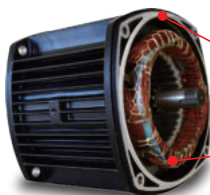
HGA8+ series electric stage hoist adopts high-strength materials and advanced manufacturing technology, with a maximum load capacity of up to 3 tons, which can easily meet the needs of various stage performances.

High quality materials + precision casting

Using high-strength aluminum alloy material, CNC machine tool processing, the body is light and strong, and the operation is stable and quiet.



Lifting motor



Aluminum alloy stretch shell

It has the function of heat dissipation and is suitable for high-frequency work.

Materials with high magnetic flux

smooth torque output, easy and stable operation even under full loading capacity.

New gearbox sealing technology

High-strength aluminum alloy integrated die-casting molding, CNC machine tool processing.

Enhanced sealing performance by new sealing technology.

Potential oil leakage risk is eliminated.



Side-out chain structure

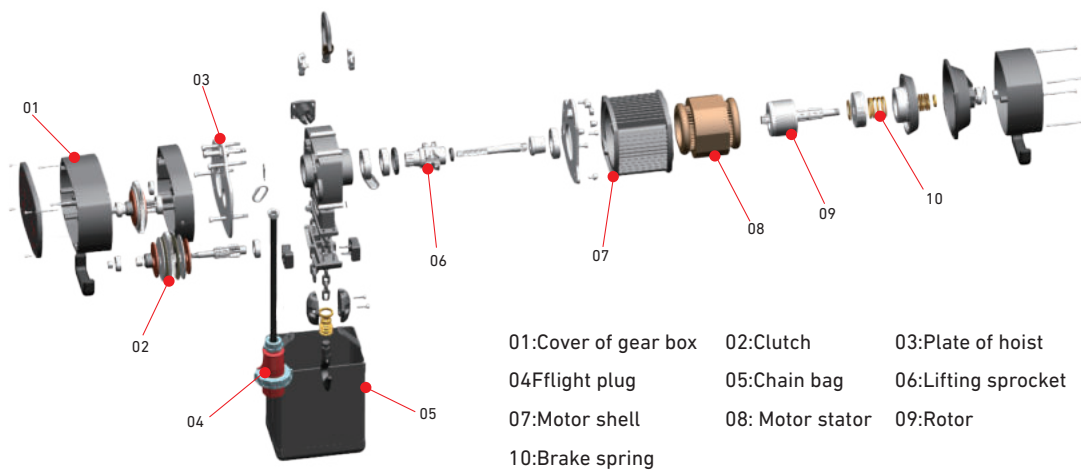
The new side-out design ensures that the chain runs quietly and smoothly.

Lifting sprockets

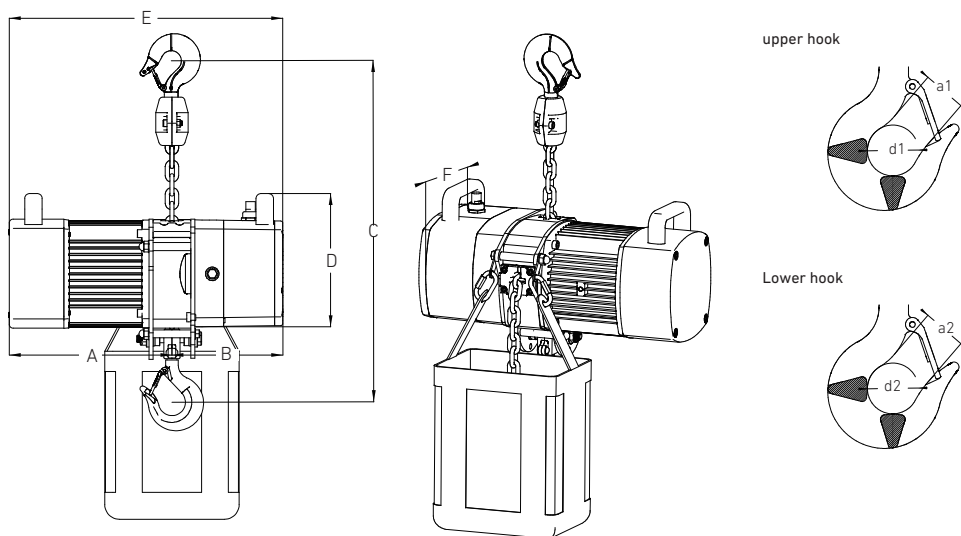
Special alloy steel forging, five chain-sockets and double-sided bearing design, smooth and quiet operation.



PRODUCT STRUCTURE



TECHNICAL PARAMETERS



Model	A	B	C	D	E	F	a1	d1	a2	d2
HGA8+ 500	242	158	480	200	410	240	30	34.5	32	40
HGA8+ 1000	190	280	600	220	470	270	33	40	33	40
HGA8+ 2000	315	315	700	300	630	350	39	48	45	59
HGA8+ 3000	315	315	750	300	630	350	50	59	50	59

Model	Capacity(kg)	Motor Power (KW)	Lifting Speed(m/min)	No.of Chain	Dia of Chain(mm)	Net Weight
HGA8+ 500	500	1.1	5	1	6.3*19	27
HGA8+ 1000	1000	1.5	4	1	7.1*21	41
HGA8+ 2000	2000	3	4	1	10*30	83
HGA8+ 3000	3000	3	4	1	11.2*34	89

Operating Voltage: 3 phase 220v-440v (single phase 220v optional)

HGA8-MAX PAYLOAD MONITORING ELECTRIC HOIST

Real-time monitoring and excellent quality

The built-in weighing module is used to display real-time load-bearing data. Its loading capacity can be set independently. And it will alarm when the limit is exceeded. Safe and reliable.



- Electronic display**
Real-time display of the lifting weight data.
- Warning lights**
If the set limit is exceeded, a red light will be displayed.
- Waterproof keys**
This is where you can set the max weight allowance.

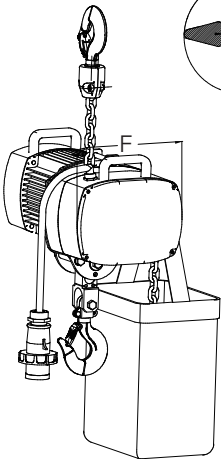
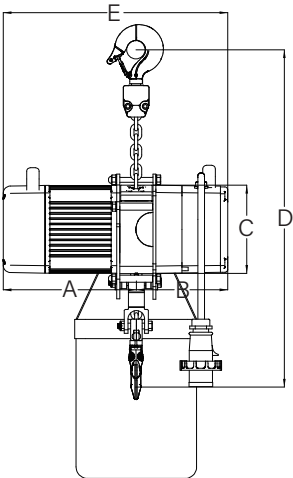
Weighing modules

High-precision weighing module for accurate measurement of the weight of hoisted items. It can be used together with load monitoring control system to achieve multi-unit linkage and control.

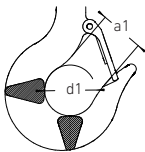


45° chain guide

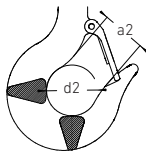
Upgraded guide chain structure, 45° natural angle for chain guiding channel, effectively avoid chain jamming, more secure use.



upper hook



Lower hook



DIMENSION (mm)											
Model	A	B	C	D	E	F	a1	d1	a2	d2	
HGA8-MAX 1000	280	190	185	670	560	270	33	40	33	40	

TECHNICAL PARAMETERS			
Model	HGA8-MAX 1000	CHAIN FALL NO.	1
Capacity(kg)	1000	Dia of Chain(mm)	7.1*21
Motor Power (KW)	1.5	Net Weight	45
Lifting Speed(m/min)	4	Protection level	IP55

Operating Voltage: 3 phase 220v-440v (single phase 220v optional)

HGA9 Pro SERIES

STAGE ELECTRIC CHAIN HOIST

Attention to detail and ingenuity

The special electric hoist for project purpose is meticulously crafted, and the point-touch type limit and rubber limit block are used to ensure the safety of the equipment operation to the greatest extent.

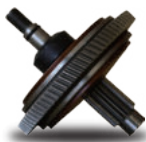


New point-touch limit switch

Greatly improved the working smoothness of the limiter prolonged its service life and increased its sensitivity.

It can effectively prevent the chain from being pulled obliquely and causing power failure of stopping the operation.

Golden Power Combination



High-performance motor + patented clutch

Extruded aluminum outer shell with IP55 protection grade. good heat dissipation.

Built-in clutch for electric motor idle rotating when it exceeds the rated payload capacity. No damage to the hoist body or chains caused by overload.

Rubber limit block

Latest innovation. proper softness to protect point-touch type limit switch.

Lifting hooks

Forged alloy steel with anti-detaching device and 360° rotation.

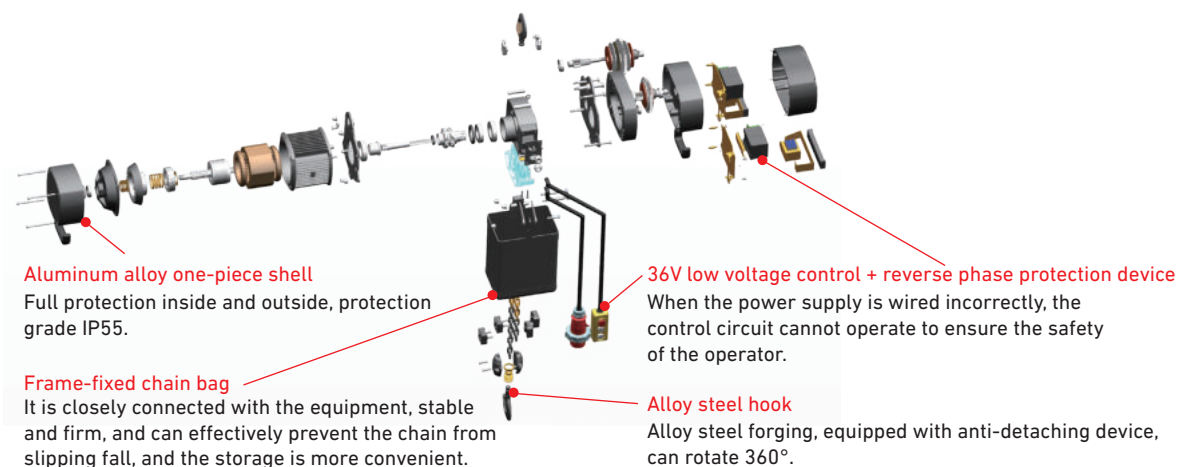


Helical gear transmission

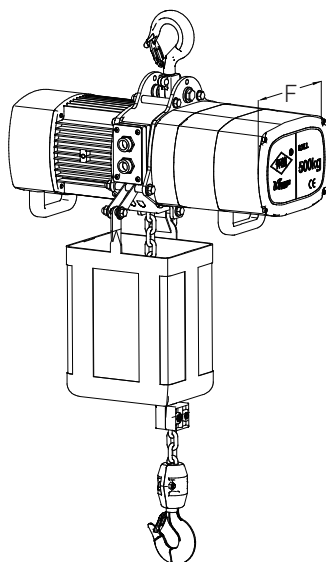
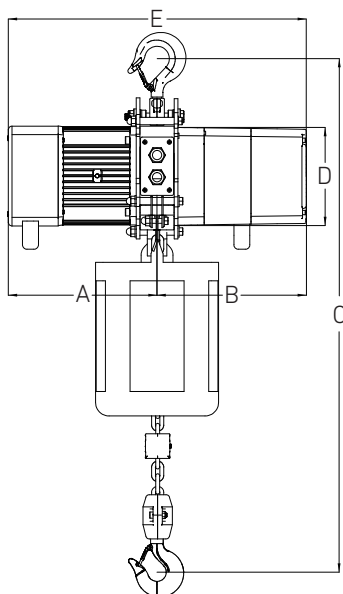
Effectively reduce equipment wear, improve transmission efficiency, reduce power loss, increase product service life, and reduce noise.



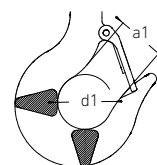
FLAGSHIP-LEVEL PRODUCT ARCHITECTURE



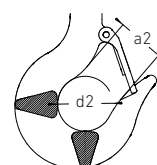
TECHNICAL PARAMETERS



upper hook



Lower hook



Model	A	B	C	D	E	F	a1	d1	a2	d2
HGA9 Pro 500	242	243	520	160	490	240	32	40	30	34.5
HGA9 Pro 1000	276	294	580	190	560	270	33	40	33	40
HGA9 Pro 2000	315	315	780	240	630	350	45	59	39	48
HGA9 Pro 3000	315	315	780	240	630	350	50	59	50	59

Model	Capacity(kg)	Motor Power (KW)	Lifting Speed(m/min)	No.of Chain	Dia of Chain(mm)	Net Weight
HGA9 Pro 500	500	1.1	5/6.8	1	6.3*19	32
HGA9 Pro 1000	1000	1.5	5/7	1	7.1*21	47
HGA9 Pro 2000	2000	3	6	1	10*30	88.5
HGA9 Pro 3000	3000	3	5	1	11.2*34	94

Operating Voltage: 3 phase 220v-440v (single phase 220v optional)

HGA9 PRO-S DOUBLE HOOK SERIES STAGE ELECTRIC CHAIN HOIST



Double-hook design

It is connected to stage equipment or props through two chains and two hooks. A more balanced and stable lifting equipment, can meet the installation requirements for small space 2 lifting points and audio/lighting mounting.

Track retainer

The hoist comes with a track retainer, which is suitable for track installation or fixed installation.

Coordinated operation

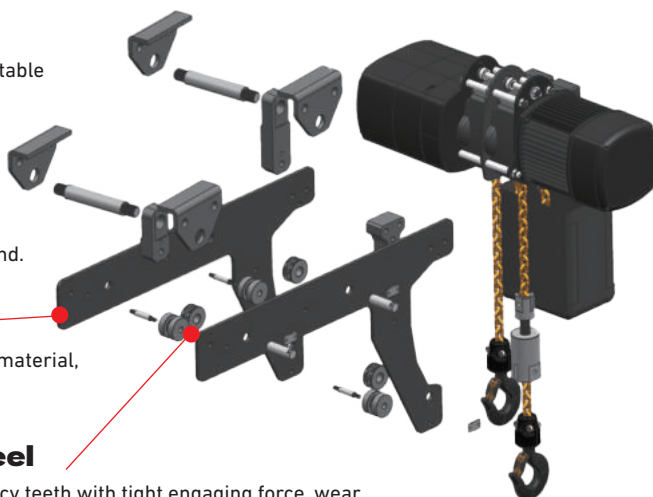
One motor, double hook design, eliminate the problem of inconsistency caused by brake inertia, and the hook spacing can be customized on demand.

High strength wall plate

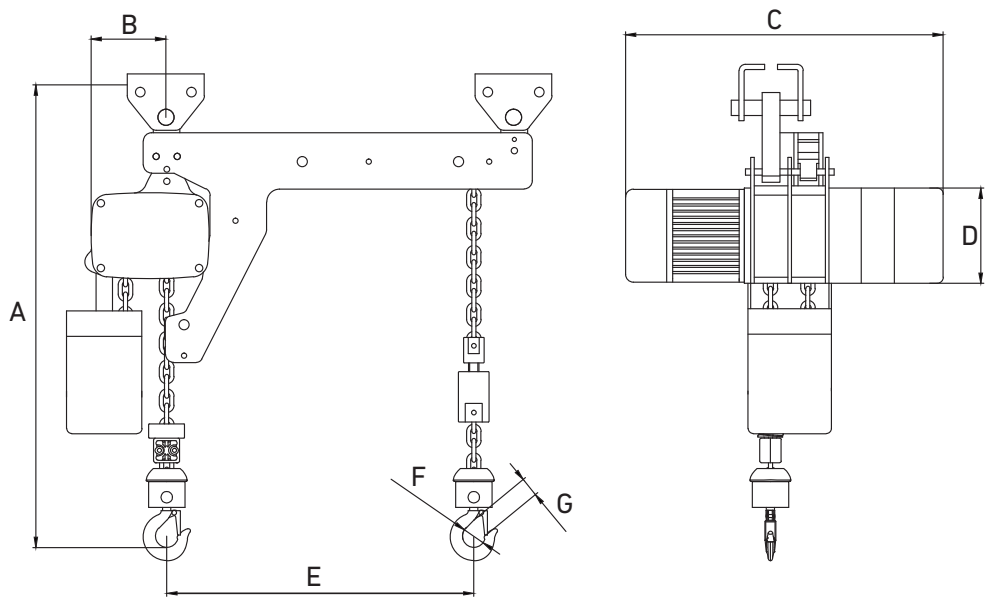
One-piece molding, high strength thickened plate material, stronger connection, to ensure safe use.

Roller wheel and sprocket wheel

Pure steel casting, integrated forming, high accuracy teeth with tight engaging force, wear resistance and no breaking tooth.



TECHNICAL PARAMETERS



Model	A	B	C	D	E	F	G
HGA9 Pro-S 500	700	150	560	160	500-1300	35	25
HGA9 Pro-S 1000	800	170	640	190	500-1500	39	26
HGA9 Pro-S 2000	900	205	720	240	500-1500	49	34

Model	Capacity(kg)	Motor Power (KW)	Lifting Speed(m/min)	No.of Chain	Dia of Chain(mm)	Net Weight
HGA9 Pro-S 500	500	1.1	5/6.8	2	6.3*19	64-83
HGA9 Pro-S 1000	1000	1.5	5/7	2	7.1*21	83.5-116
HGA9 Pro-S 2000	2000	3	6	2	10*30	141-176

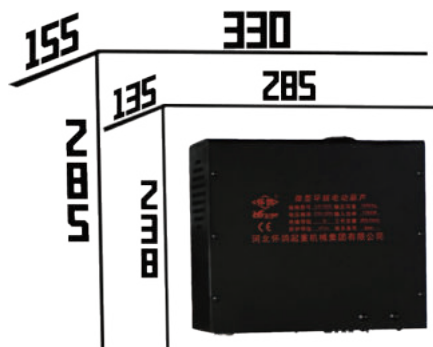
Operating Voltage: 3 phase 220v-440v (single phase 220v optional)

EK SERIES MINI STAGE ELECTRIC CHAIN HOIST

Mini in size and robust in quality

Born in the blend of lighting and sound, it interprets the great wisdom under the small body, Easy operation in small confined space. Small size and portable. No fear of challenges.

Small, and even smaller



EK 500/1000
EK 250



Lightweight design

Note: Unit: mm

It can also be used in small spaces, a good helper for efficient work, small and portable, and fearless of challenges.

Black body + aluminum alloy material

It satisfy most of the stage use scenarios, with a small body, beautiful appearance and easy operation.

The aluminum alloy metal shell is strong and durable, and meets the needs of low headroom.

Motor with cooling fan, Suitable for high frequency work.



Compact body with powerful heart

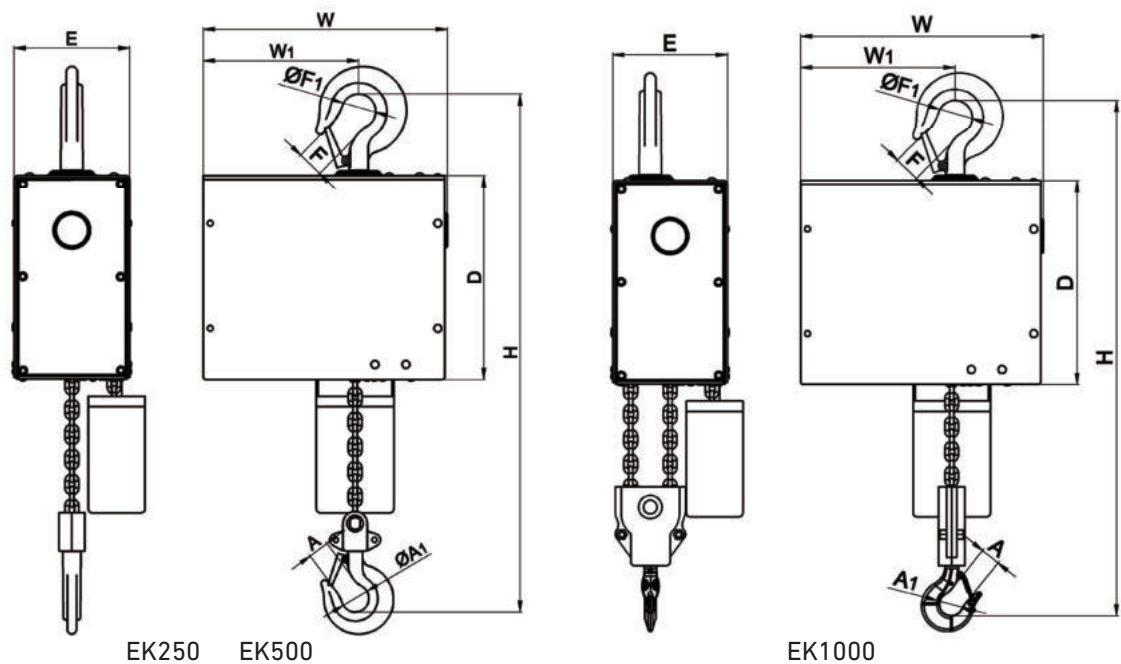
The surging power is released at the core, easy lifting, smooth operation, flexible action.

Lifting sprockets

Forged from alloy steel, it runs smoothly and has low noise, which meets the requirements of use.



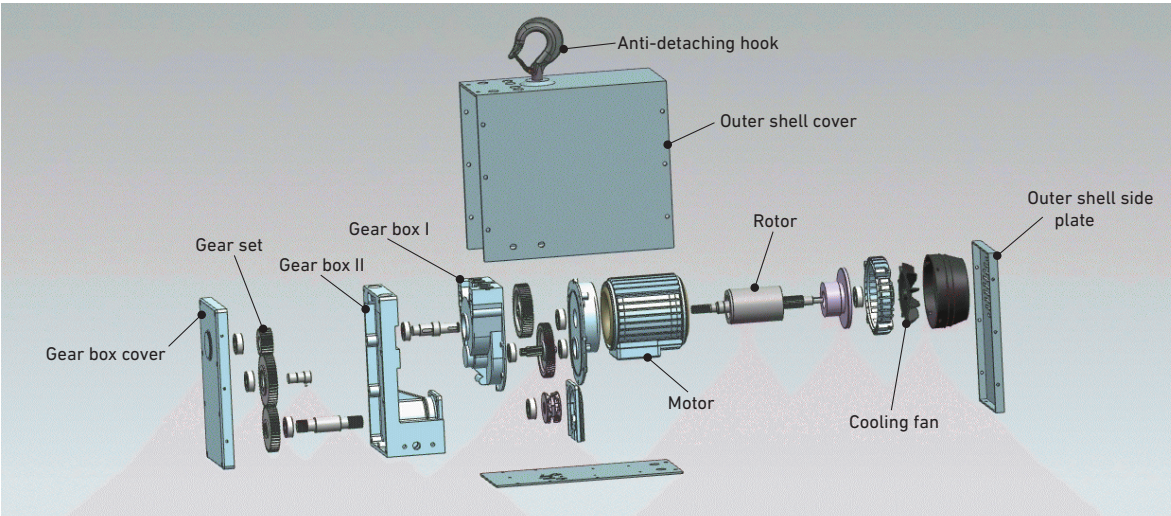
TECHNICAL PARAMETERS



Model	E	W	W ₁	F ₁	F	D	H	A	A ₁
EK 250	135	285	185	40	26	238	480	25	35
EK 500	155	330	210	40	26	285	560	25	35
EK 1000	155	330	210	40	26	285	665	26	40

Model	Capacity(kg)	Motor Power (KW)	Lifting Speed(m/min)	No.of Chain	Dia of Chain(mm)	Net Weight
EK 250	250	0.51	4	1	5*15	16.8
EK 500	500	1.3	4	1	5*15	26.6
EK 1000	1000	1.3	2	2	5*15	29.9

Operating Voltage: single phase 220v (single phase 110v optional)



HGK-C-D TOUCH SCREEN CONTROLLER



High end touch screen controller system.All control instructions are integrated in the LCD touch screen by digits display.

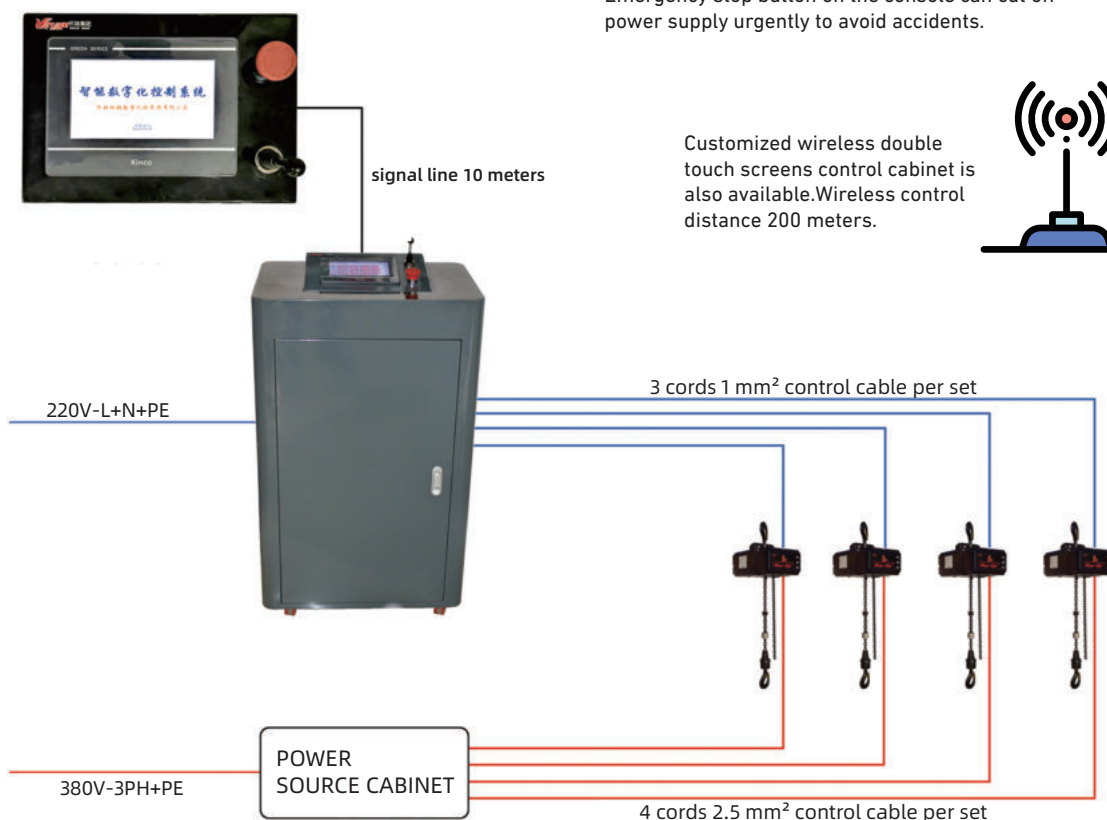
Controller can operate one single or grouping electric hoists.It can nominate each equipment or grouping equipments task purpose and edit their names.This will save your time to find the scene layout drawings.

Ergonomically engineered LCD console has good appearance and is easy to operate.

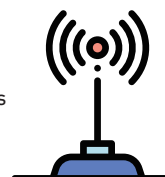
LCD console and IC cabinet are designed seperately. Only one signal line is needed for connection.This makes operation more convienent and flexible.

Hand-held console is equipped with joy stick handle.Push the joy stick handle up or down to control the electric hoists lifting or descending.It will restore to the middle position and stop sending signals to the operation system if no operation is needed.This makes operations controllable and safe.

Emergency stop button on the console can cut off power supply urgently to avoid accidents.



Customized wireless double touch screens control cabinet is also available.Wireless control distance 200 meters.



IC CABINET POWER SOURCE: SINGLE PHASE 220V THREE WIRES L+N+PE.

HGK-C-G TOUCH SCREEN CONTROLLER



High end touch screen controller system.All control instructions are integrated in the LCD touch screen by digits display.

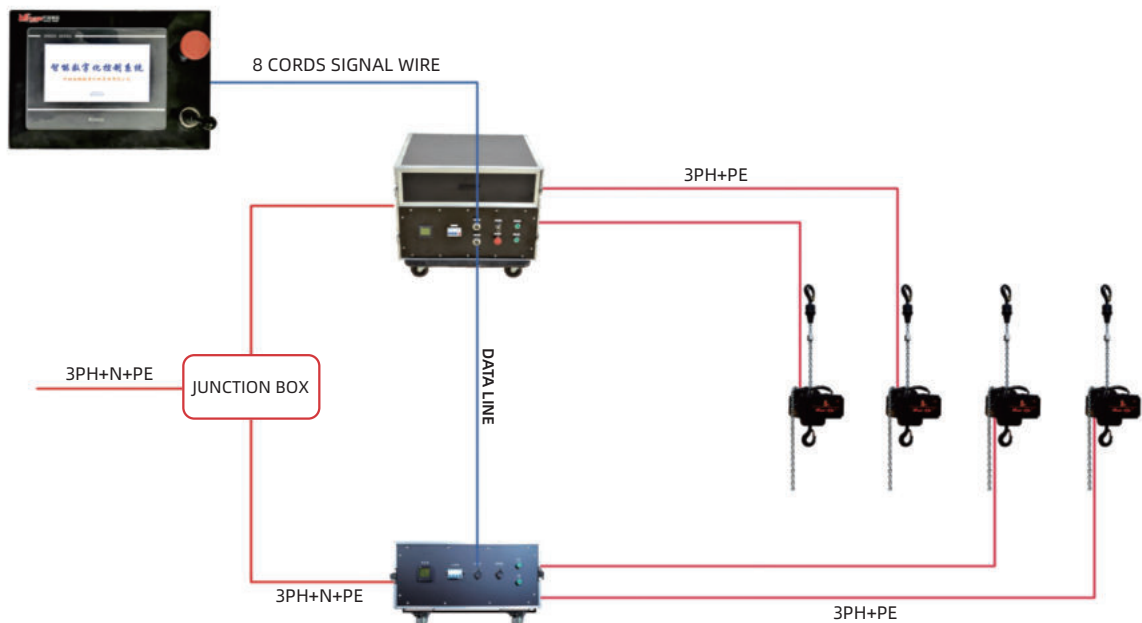
Ergonomically engineered LCD console has good appearance and is easy to operate.

Controller can operate one single or grouping electric hoists.It can nominate each equipment or grouping equipments task purpose and edit their names.This will save your time to find the scene layout drawings.

LCD console and IC cabinet are designed seperately.Only one signal line is needed for connection.This makes operation more convienent and flexible.(thereotically the signal line length can reach up to 200 meters).

Hand-held console is equipped with joy stick handle.Push the joy stick handle up or down to control the electric hoists lifting or descending.It will restore to the middle position and stop sending signals to the operation system if no operation is needed. This makes operations controllable and safe.

Emergency stop button on the console can cut off power supply urgently to avoid accidents.



IC CABINET POWER SUPPLY: 380V -3PH+N+PE 3 PHASES 5 WIRES

HGK-D SYNCHRONOUS GROUPING CONTROLLER



Fixed installation for special places, Control voltage 36V.

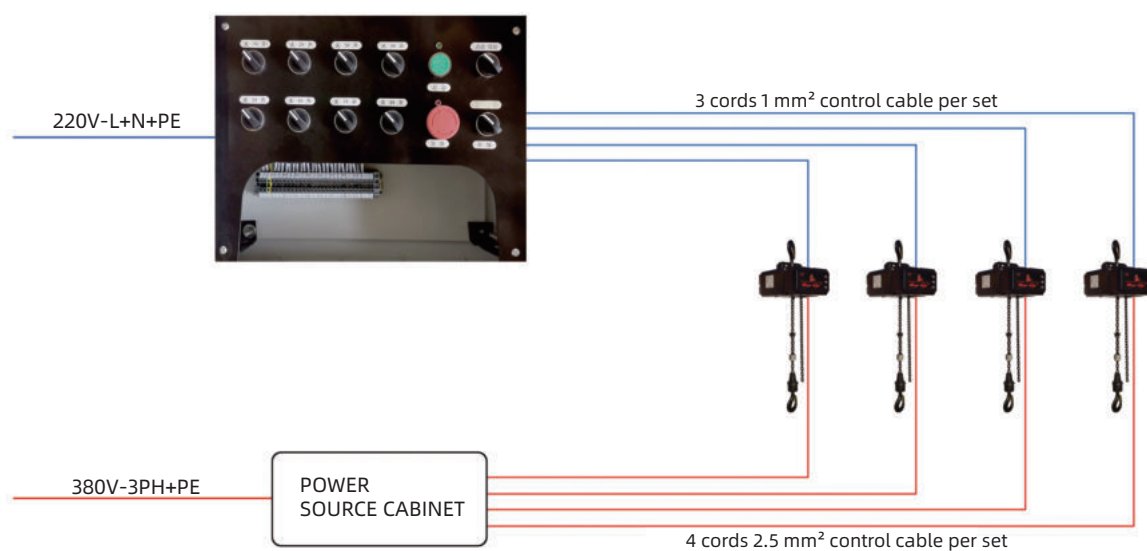
All electronic components are aging tested. Key components are imported brand.

Wall mounted cabinet. small size, adjustable electric hoist quantity to be controlled.

Jog knob, continuous motion knob are both set. More convenient.

Power supply 220V with earthing line for safety.

Wireless remote control for option.



HGK-G SYNCHRONOUS GROUPING CONTROLLER



Max 46 channel lines. Power supply 380V with earthing line for safety.

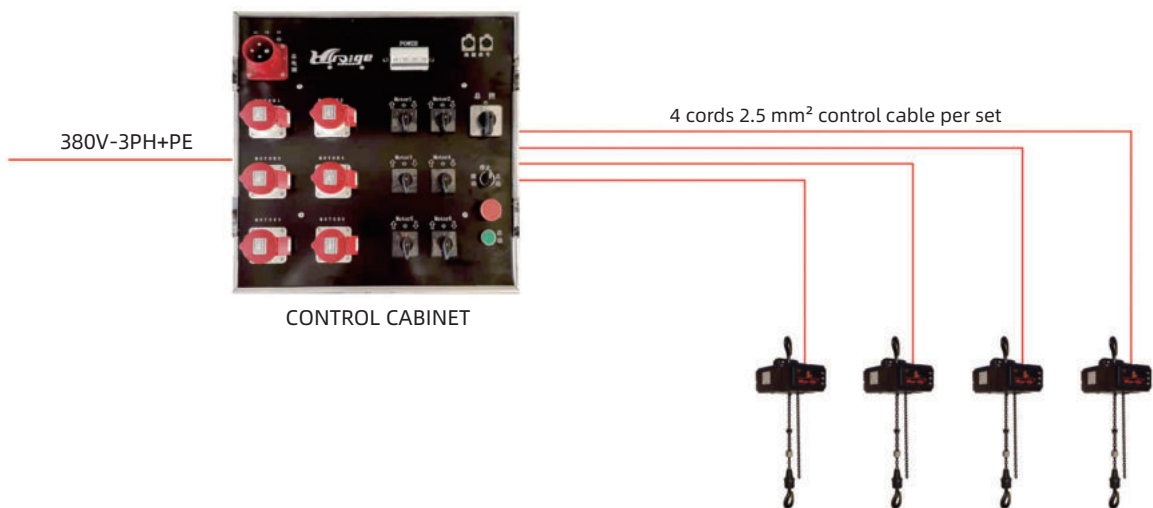
All electronic components are aging tested. Key components are imported brand.

Heavy change-over knob for each hoist power source supply. Better controllable.

Convenient tandem connection ports for linkage motion of multiple controllers.

Flight case design for the outer shell. Easy and convenient carrying for touring performance market.

Wireless remote control for option.



24-WAY VERTICAL CONTROL CABINET



With 24 input and output ports, it could complete multi-channels signal collection and control, can realize one individual hoist control and multiple hoists simultaneous control.

Multiple control modes can meet various operation requirements under different scenarios.

Multiple control gears with clear and full functions. Emergency stop button for urgent fast stop operation to guarantee safety.

High quality quick-coupling flight plug, solid secure connection, steady signal transmission. Insulation material design can effectively prevent electric leakage and short circuit.

Imported-brand main components with aging tests.

Outer shell of the flight case is wear-resistant and corrosion-resistant, easy to carry and transport, suitable for tourism performance.

High voltage control, convenient wiring connection. One piece of high voltage control cable can complete the lifting/descending operation.

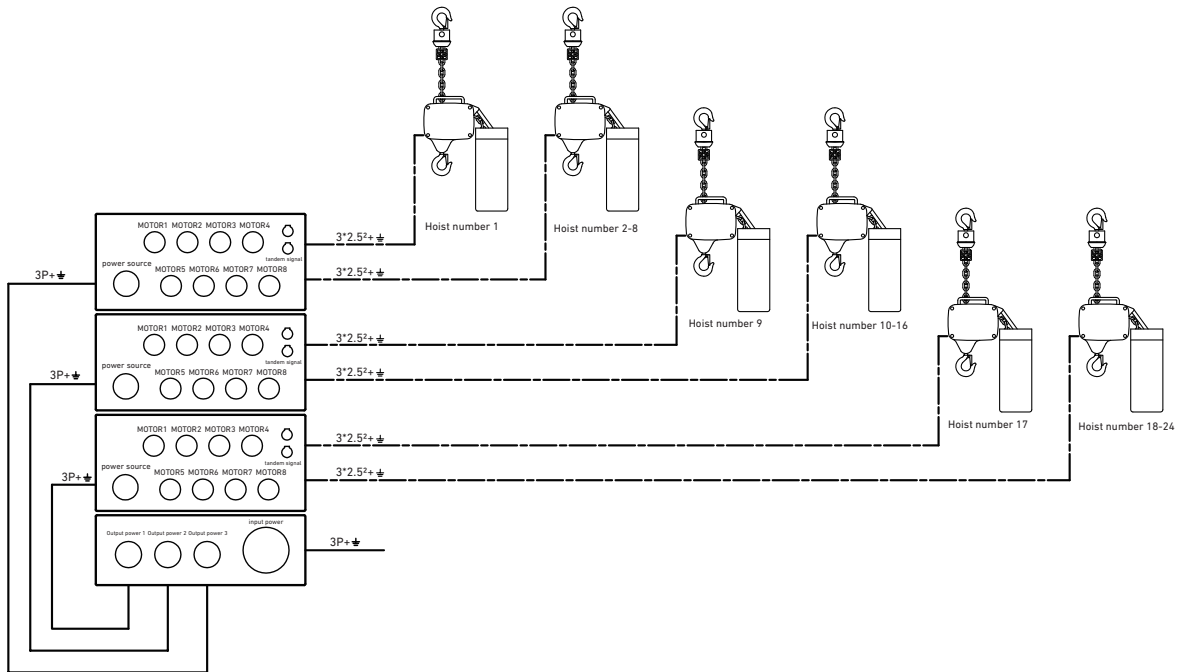


one for one / conventional

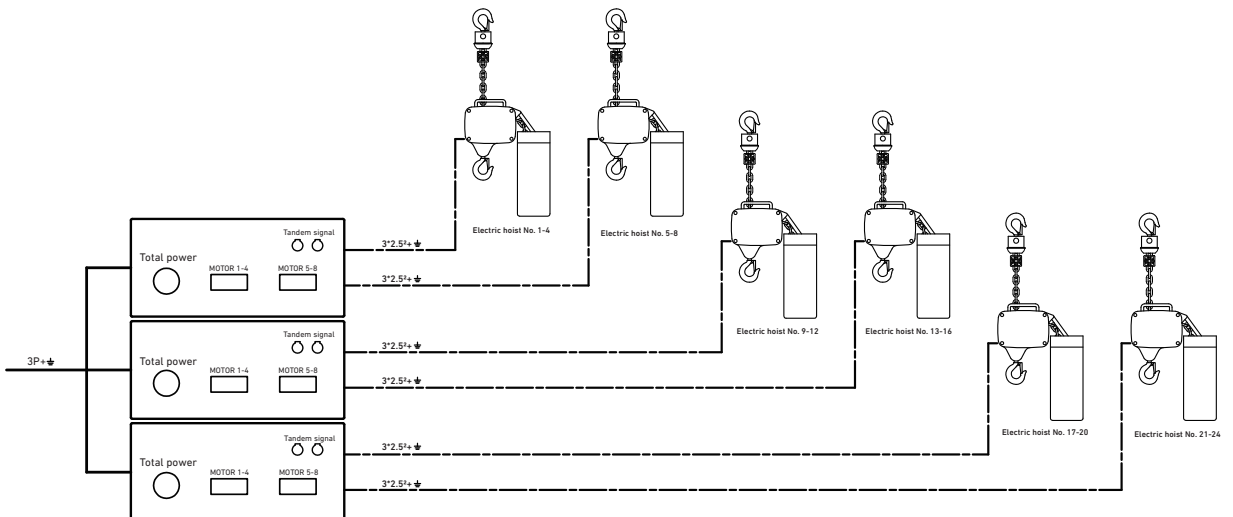


one for four / scattered tail

one for one / coventional



one for four /scattered tail



PAYLOAD MONITORING CONTROL SYSTEM

(HIGH VOLTAGE/DIRECT CONTROL)



Advanced weighing module can directly and clearly display real-time loading data for each hoist through histogram. It can implement payload monitoring transparency(normal condition: blue,lower than min payload:yellow,higherthan max payload:red). User can set up min payload data and max payload data.

Overload alarm will be recorded to check each hoist loading situation.Convinient for user's future data analysis and problem tracking.

Wired payload monitoring control system can implement mutple-wires connection, for example: 4 channels,8 channels, 12 channels,24 channels,etc,up to 250channels through intermediate relay expansion at most.It can do group control operation to increase efficiency.

The outer shell of the flight case is easy to carry and transport meeting the requirements of tourism performance. Wear proof and corrosion resistance.

Multiple control gears, more comprehensive functions, more convenient to use, and equipped with an emergency stop button, for extreme fast stop operation.

Imported brand critical components with aging tests.

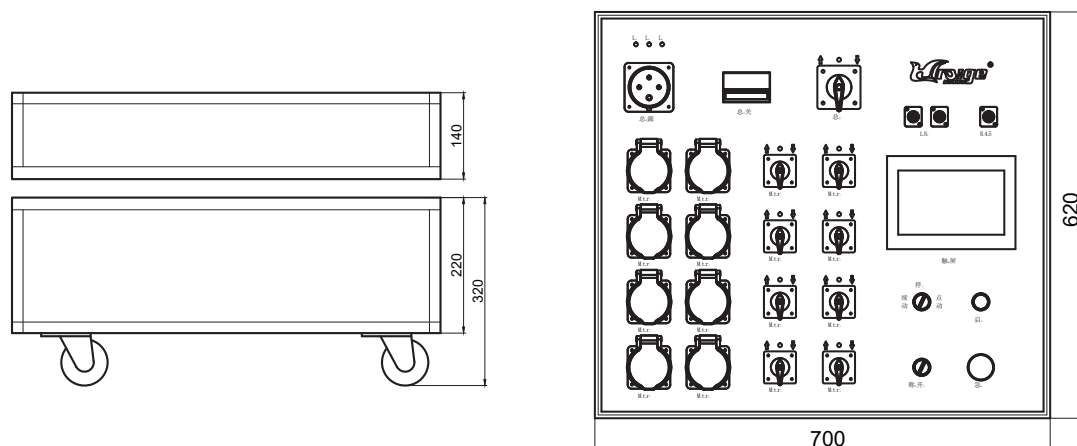
High quality flight plug can prevent electric leakage and short circuit by using earthing pin and insulation material design.Solid secure wire connection and steady signal transferring.

Weighing module works together with controller,through LED screen,to directly and clearly display the payload weighing data of each hoist.

The power supply is 380V 3ph +N+PE to ensure safe operation.

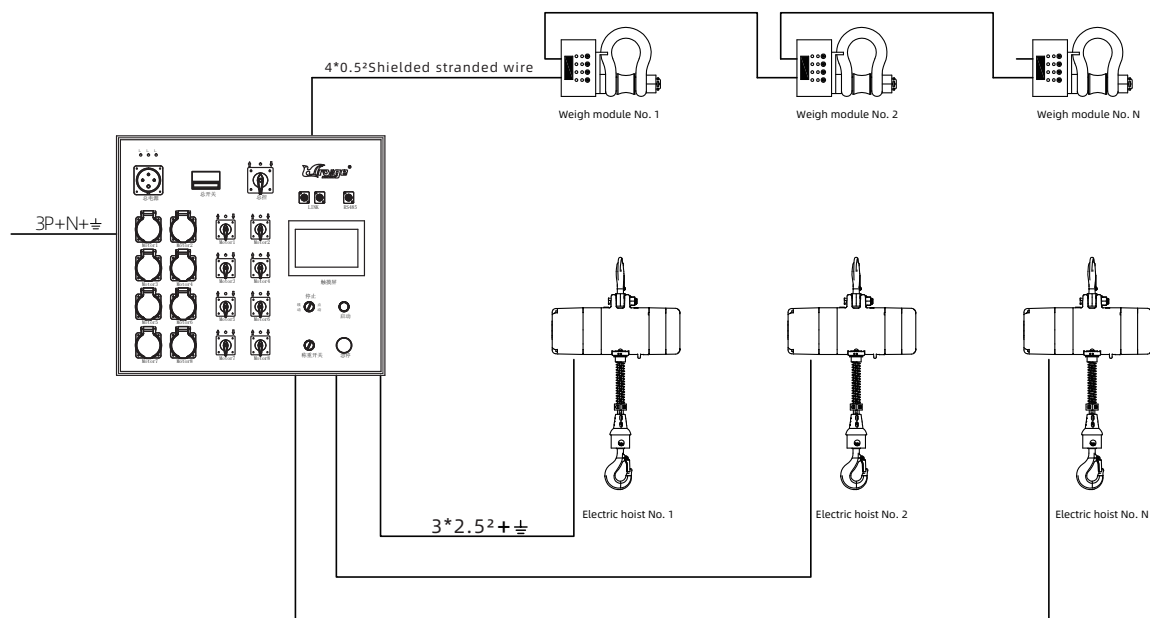
TECHNICAL PARAMETERS

Exterior Dimension Drawing

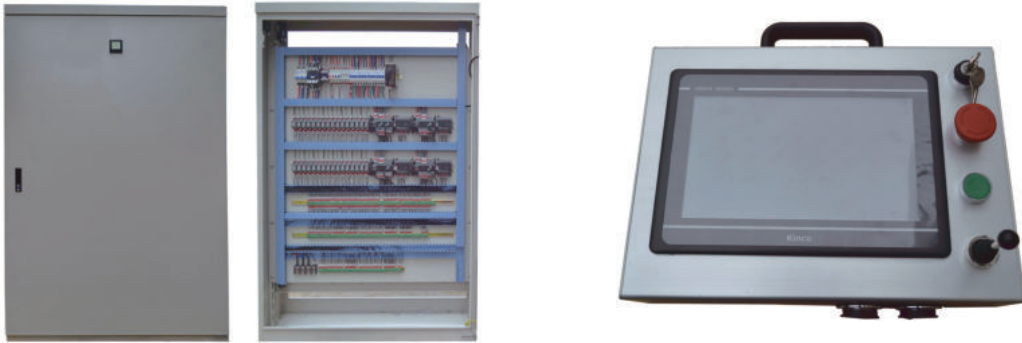


Note: unit mm

Operational diagram



PLC CONTROL SYSTEM



Integrated control in only one cabinet for power supply cables and signal lines.easy maintainence and commissioning.
Suitable for banquet,bar and theatre performances.

Built-in high performance vector frequency converter.Steady and smooth speed adjustment for lifting and descending.

Touch screen console can execute grouping control for each hoist lifting/descending and positioning,real-time lifting height display,static point positioning,etc.

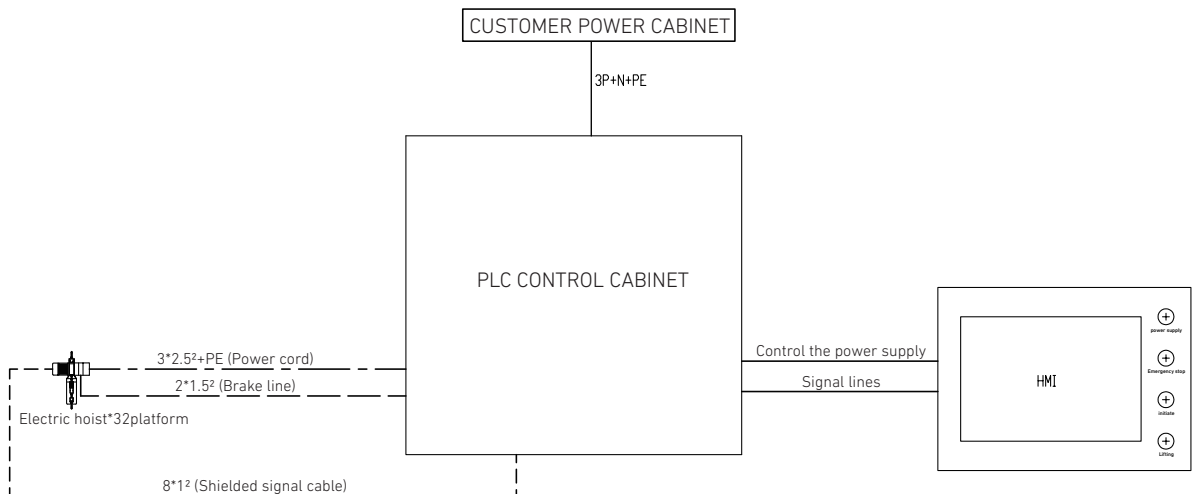
Repeated positioning accuracy $\pm 5\text{mm}$.

Touch screen console is connected with PLC master electronic control cabinet,equipped with emergency stop and rocker handle for operation.

PLC system can store different scenarized application programs,or complete continuous actions for multiple styles.
It can realize required stage action effects perfectly.

Console and master cabinet are designed and produced independently.It is more safe to help operator better visualization of hoists action scenes for real-time monitoring.

Power source supply: $380\text{V}(\text{L1}+\text{L2}+\text{L3}+\text{N}+\text{E})$.



THE INTERFACE DETAILS



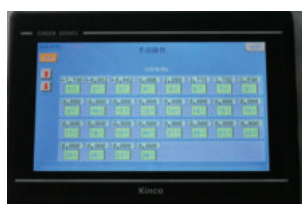
The PLC programming system is mainly divided into two sections: control mode selection(01) and parameter setting(02).

CONTROL MODE SELECTION(01):

Includes manual operation, automatic operation, centralized control.

PARAMETER SETTING(02):

Includes height correction, height proportionality, speed regulation from frequency varying, and other settings.



MANUAL OPERATION



AUTOMATIC OPERATION



CENTRALIZED CONTROL

MANUAL OPERATION

Select your desired hoist quantity according to your demand, and then operate the joystick handle to control your selected hoists for lifting/descending. Emergency stop button is served.

AUTOMATIC OPERATION

Edit specific program to control hoist for specific actions according to your requirements. Repeated cycle function is also served for circulation actions.

CENTRALIZED CONTROL

Grouping control is available. Set up height data, operate the joystick handle and then all your required hoist group will lift up to your set height.



HEIGHT CORRECTION

The mismatch between the actual running height of the electric hoist and the height displayed on the screen during operation.



HEIGHT PROPORTIONALITY

The running height of the electric hoist does not match the screen display and needs to be adjusted in this interface. It is generally used in the equipment commissioning.



VARIABLE FREQUENCY SPEED REGULATION

Adjust the running speed of the electric hoist.

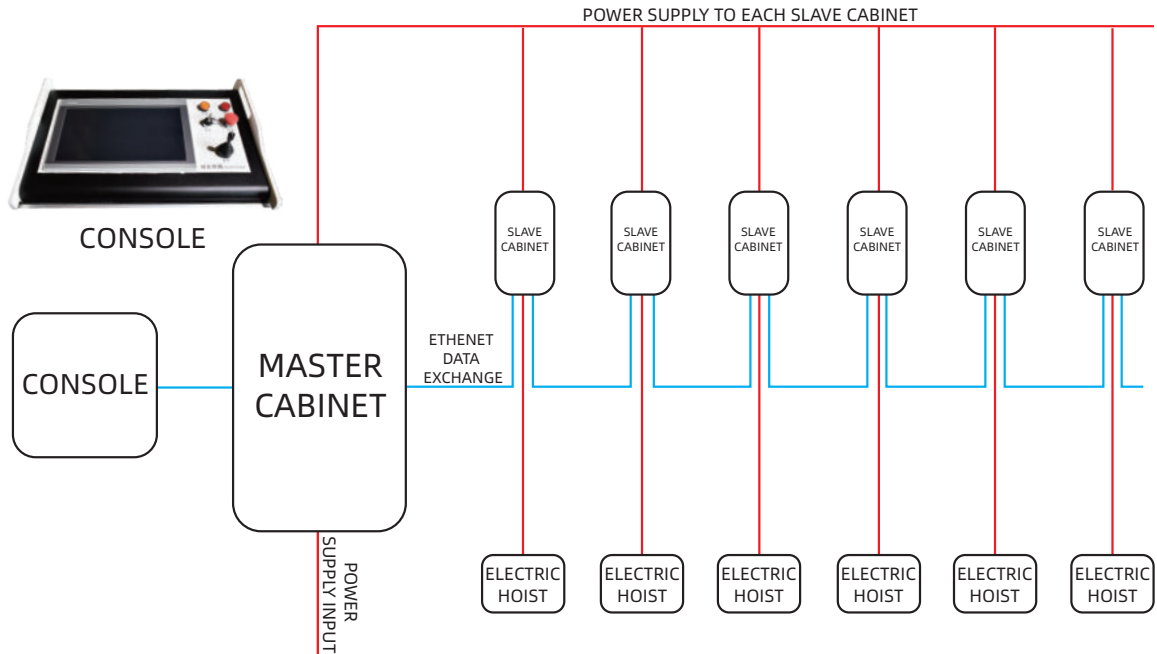


OTHER SETTINGS

speed deceleration in advance, quick descending and slow stopping, are all available to minimize the damage to the hoist and chains.

set up the hoist stopping tolerance range. Within this tolerance, there is no need to adjust the hoist any more.

ETHERNET PROGRAMMABLE CONTROL SYSTEM



Integrated design for drive system and control system. One signal line and one power line can control the whole system.

Distributed electric cabinets design. Each electric hoist is equipped with one slave control cabinet. Reduce too much wiring and signal interference. Quick installation. Suitable for touring performance.

Built-in high performance vector frequency converter. Smooth speed adjustment for steady lifting and descending. Particular motion speed is adjustable.

Slave control cabinets can be mounted on the truss with the mounting support frame.

ISO standard connection ports. Plug and play without additional conversion.

Console has configuration panel and touch screen display. It can execute ramp start/stop, static point positioning, real-time display of lifting height, etc.

Repeated positioning accuracy $\pm 1\text{mm}$.

PLC master electronic control cabinet can measure the electric hoists loading weight and monitor each hoist loading situation. If overload 120%, it will automatically cut off power supply to stop hoisting and send alert to change operation (optional).

Heavy loading connectors can transfer hoists position limit signal and encoder signals.

Max 100 meters console operation away from hoists is supported.

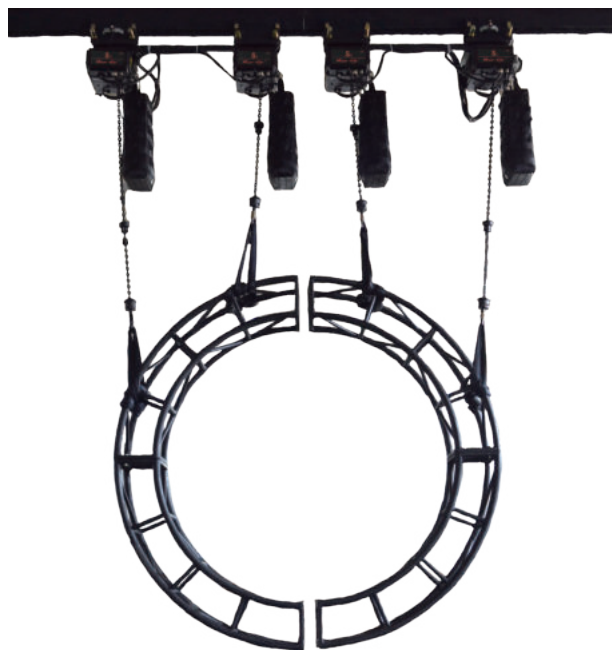
Ethernet master electronic control cabinet

5 cords plug-in connector to connect power source. Rated power supply voltage: 380V(L1+L2+L3+N+PE).

CE 380V socket output. Each line 32A. Working with master control cabinet, it can complete different stage scenes like various styles, vertical lifting/descending and angles changing, etc.

32A master power source output. One power source line can support 4-6 slave electronic control cabinets. Less wiring.

INTELLIGENT ORBIT SYSTEM



The system includes hoist lifting point, controller, power cabinet and hoist chain slider.

Users can freely and flexibly realize the desired lighting layout design through the system, realize real-time dynamic program performance and record effects through the control software.

The system can integrate the real-time operation monitoring function and the abnormal error handling function to ensure the safety of the system.

The system can be flexibly expanded, easy to install and disassemble, and realize the hanging motion control from the simplest to the most complex, perfectly execute every detail of the performance, and integrate the safe operation of the system with artistic creation.

Applicable Scene, TV Station, Concert, Commercial.



The Intelligent rail system can use 500kg or 1000kg electric chain hoist. The hoist chain is rigidly connected, with large load, small deformation, high positioning accuracy, simple and safe structure, and can be replaced in time when the equipment fails, and the maintenance is simple in use.

Model No: IS-1000

Capacity: 1000kg

Power: 0.75KW

Speed: 11m/min

Voltage: 380V

MANUAL CHAIN HOIST SERIES+ LIFTING EQUIPMENT SUPPORTING PRODUCT SERIES



MANUAL CHAIN HOIST SERIES

Manual chain hoists are suitable for operations in places without power supply and narrow spaces, and can be used for touring performances and fixed installations.



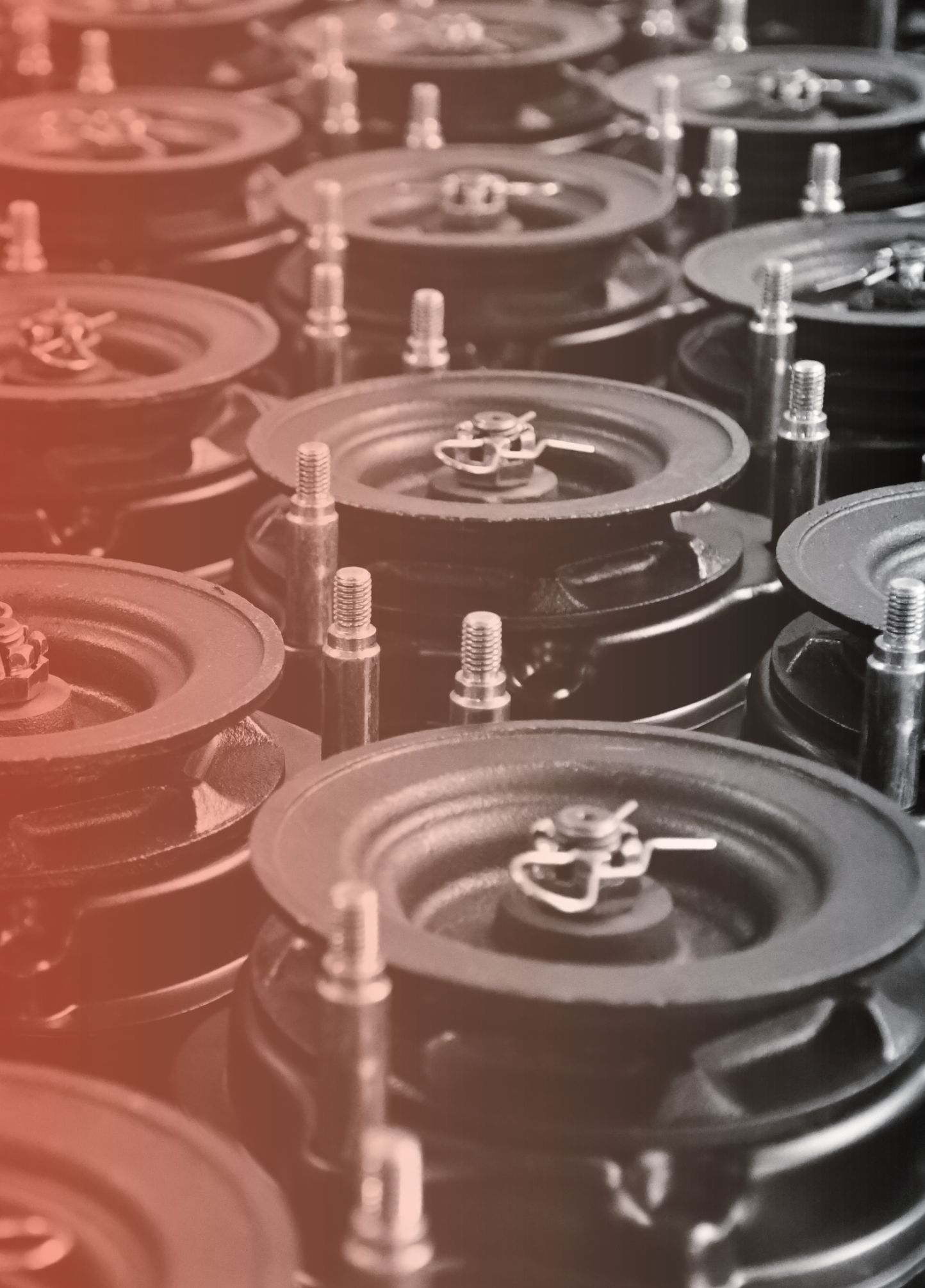
SUPPORTING PRODUCTS FOR LIFTING EQUIPMENTS

The supporting products are: beam clamps, stage webbing slings, stage wire rope slings, trolley, etc...



DEDICATED FLIGHT CASE

Customized flight case, more compact, stronger, butterfly lock design, reinforced box cover, professional manufacturing quality assurance.



HM-A 360° CHAIN BLOCK



All parts are made of high-quality materials.

Sturdy all-metal shell.

Both the chain guide mechanism and the gear transmission mechanism have shell protection devices.

The lifting sprocket is made of hard material and finishing.

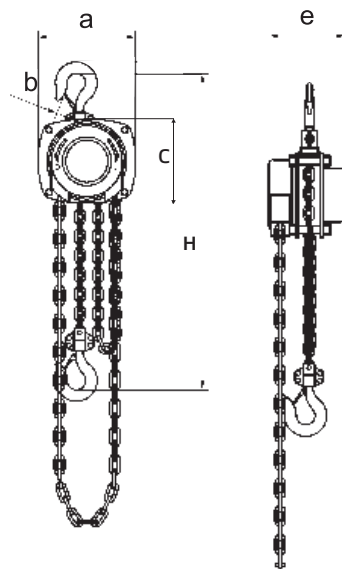
Compact size for more headroom.

Galvanized load chain.

The material of the up and down hooks are anti-aging and made of high-toughness alloy steel.



The hand chain cover can be rotated 360° to increase the operability of the chain hoist



MODEL	CAPACITY (kg)	FORCE OF FULL LOAD (N)	LIFTING HEIGHT (m)	NO.OF FALLS LOAD CHAIN	RUNNING TEST (kg)	LOAD CHAIN DIA(mm)	HAND CHAIN DIA (mm)
HM-A100	1000	305	≥6	1	1500	6	5
HM-A200	2000	360	≥6	1	3000	8	5

MODEL	DIMENSION (mm)					PACKAGE SIZE/ WOODEN BOX (mm)			LOAD CHAIN N.W. (kg/m)	HAND CHAIN G.W. (kg/m)	G.W (kg)
	a	b	c	e	H	L	W	H			
HM-A100	180	28	160	140	360	300	215	285	0.77	0.8	14.5
HM-A200	210	34	190	160	460	320	235	280	1.36	0.9	20.5

HM-B STAGE CHAIN BLOCK



Double pawl and automatic fail-safe brake device are safe and reliable.

Durable friction discs.

Equipped with a uniquely designed chain guide wheel.

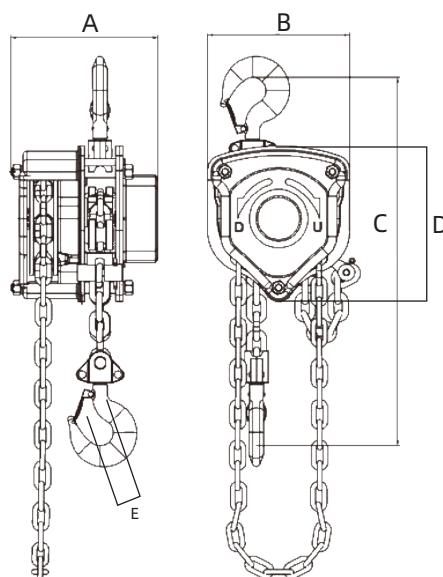
The heat-treated large plate, various gears and long and short shafts have higher strength.

Hooks and chains are quenched and tempered.

The up and down hooks are forged and have safety latch.

The surface is treated with powder paint.

Chain surface galvanized treatment.



MODEL	CAPACITY (kg)	RUNNING TEST LOAD(kg)	LIFTING HEIGHT (m)	LOAD CHAIN DIA(mm)	NO.OF FALLS LOAD CHAIN	DIMENSION (mm)					G.W (kg)
						A	B	C	D	E	
HM-B0.5	500	750	≥6	5	1	130	135	330	135	21	8.4
HM-B1.0	1000	1500	≥6	6.3	1	150	150	360	155	28	12
HM-B1.5	1500	2250	≥6	7.1	1	150	165	380	175	30	16.2
HM-B2.0	2000	3000	≥6	8	1	180	210	420	220	32	20
HM-B3.0	3000	4500	≥6	7.1	2	150	165	500	175	36	24
HM-B5.0	5000	7500	≥6	9	2	180	215	700	230	43	41

HM-D STAGE CHAIN BLOCK



Double pawl and automatic fail-safe brake device are safe and reliable.

Durable friction discs.

Equipped with a uniquely designed chain guide wheel.

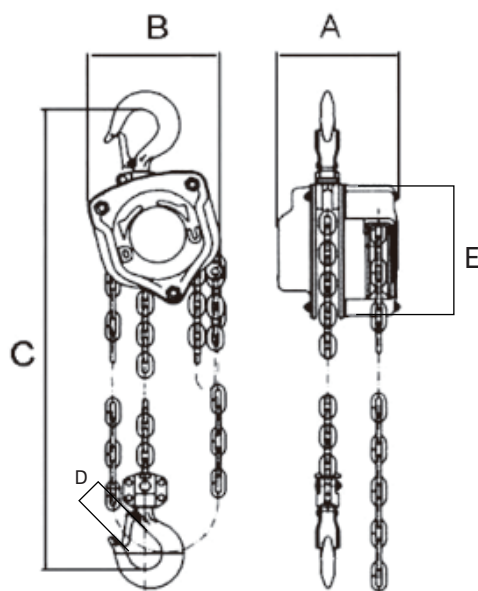
Heat-treated plates, gears, long and short shafts have higher strength

Hooks and chains are quenched and tempered.

The up and down hooks are forged and have safety latch.

The surface is treated with powder paint.

Chain surface galvanized treatment.



MODEL	CAPACITY (kg)	RUNNING TEST LOAD(kg)	LIFTING HEIGHT (m)	LOAD CHAIN DIA(mm)	NO.OF FALLS LOAD CHAIN	DIMENSION (mm)					G.W (kg)
						A	B	C	D	E	
HM-D0.5	500	750	≥6	5	1	130	135	330	135	21	8.4
HM-D1.0	1000	1500	≥6	6.3	1	150	150	360	155	28	12
HM-D1.5	1500	2250	≥6	7.1	1	150	165	380	175	30	16.2
HM-D2.0	2000	3000	≥6	8	1	180	210	420	220	32	20
HM-D3.0	3000	4500	≥6	7.1/9	2/1	150	165	500	175	36	24
HM-D5.0	5000	7500	≥6	9	2	180	215	700	230	43	41

HOIST TROLLEY

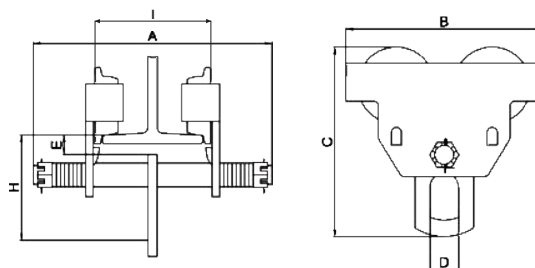


The trolley can be moved easily under load.

A locking device can also be added to realize locking after positioning, which is suitable for manual and electric hoists.

Preset long-lasting lubricating oil, sealed bearings, so that the monorail wheel has excellent mechanical properties.

It can be adjusted for different track widths and slopes.



CAPACITY (kg)	MIN.RADIUS OF CURVE(m)	G.W (kg)	DIMENSION (mm)						
			A	B	C	D	H	E	I
1000	1	12	283	228	216	30	136	30	90-190
2000	1.1	22	302	258	222	32	145	30	100-190
3000	1.3	33	345	310	300	45	170	25	110-240

BEAM CLAMP



Provides a quick and easy accessory for supporting hoist equipment and blocks, utilizing the principle of adjustability, the width can have a certain adjustment range.

MODEL	I-BEAM WIDTH (mm)	Minimum cross-sectional width of I-beam (mm)	G.W (kg)
1000	75-230	75	3.8
2000	75-230	75	5
3000	80-320	80	9
5000	90-320	90	11
10000	90-320	90	18

SOFT WEBBING SLING FEATURES



Specifications: 2000kg*2m, 2000kg*3m.

Using imported UV, can reduce and resist material aging.

When lifting the goods, the tensile force is evenly distributed to protect the surface of the goods from being damaged.

Moisture resistance, good heat resistance up to 80 degrees.

The material has little distortion, little loss and long service life (100% polyester yarn).

6 times safety factor.

STAGE WIRE ROPE WEBBING SLING FEATURES



Specifications: 2000kg*1m, 2000kg*2m, 2000kg*3m, 2000kg*6m.

The slings are made of polyester and have a wire rope inside.

steel wire diameter 15mm, twines back and forth 32 times to increase flexibility while ensuring the sling strength.

The heat resistance of the sling is up to 150°C.

The safety factor is 5 times when the load capacity is 2000kg.

The minimum bending radius is 6mm.

The opening on the surface is convenient for checking the condition of the steel wire.

FLIGHT CASE

Light weight material for body construction,3 inch 360° rotatable universal wheel,easy handling.

High quality aluminum edge frame,good looking and high performance for crush/impact/corrosion resistance.

Rivet fasterning alloy corners all around,effective protection from impact.

Fanerkang metal lock, no fading, high strength and long service life.

Sunken handle design,holding comfortably and good loading capability.Well designed internal layout for bigger storage space.

Extra damping cushion material for product protection.

Flight case is designed according to product dimensions. Tight fit between the case and product.



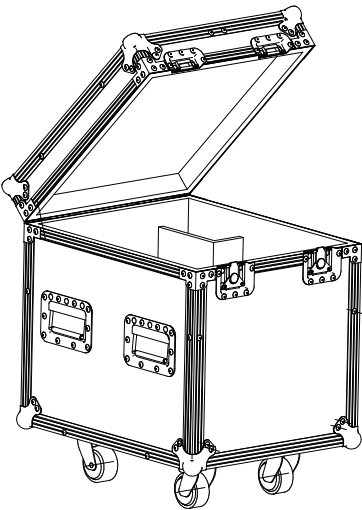
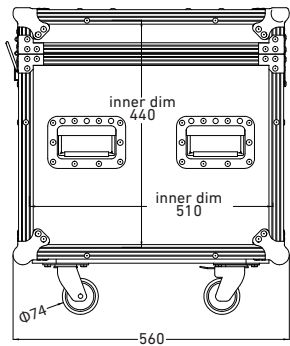
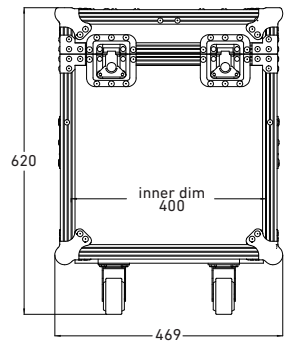
FLIGHT CASE PRODUCT MODEL	APPLICABLE PRODUCT MODELS	NET WEIGHT	CHAIN LENGTH
SU-CASE-D	SU-0.5 D8	20.9	≤30
	SU-2.0-2 D8		
	SU-1.0 D8		
SU-CASE-W	SU-0.5 D8 PLUS	25.4	≤30
	SU-1.0 D8 PLUS		
	SU-2.0-2 D8 PLUS		
	SU-2.0 D8 PLUS		



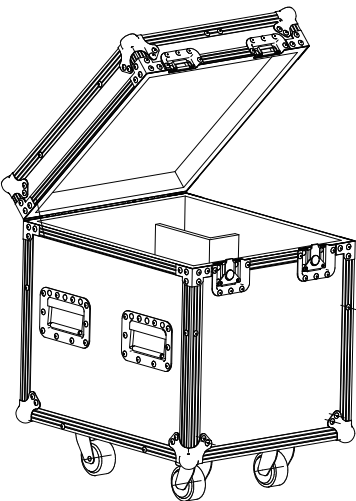
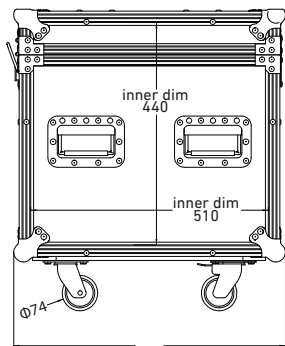
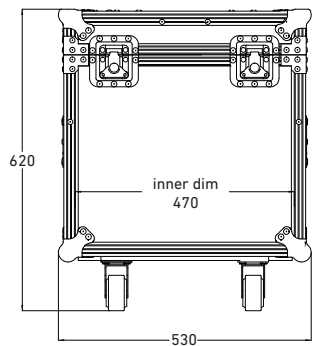
FLIGHT CASE PRODUCT MODEL	APPLICABLE PRODUCT MODELS			NUMBER OF INSTALLED UNITS	NET WEIGHT	CHAIN LENGTH
SK-CASE-320-ONE	D8 320	D8 320 (2Br)	D8 PLUS 250	1	14.5	≤30
SK-CASE-320-TWO	D8 320	D8 320 (2Br)	D8 PLUS 250	2	21.1	≤30
SK-CASE-320-FOUR	D8 320	D8 320 (2Br)	D8 PLUS 250	4	32.8	≤30
SK-CASE-1000-ONE	D8 1000	D8 1000 (2Br)	D8 PLUS 1000	1	18.9	≤30
	D8 2000	D8 2000 (2Br)	/			
SK-CASE-1000-TWO	D8 1000	D8 1000 (2Br)	D8 PLUS 1000	2	30.3	≤30
	D8 2000	D8 2000 (2Br)	/			



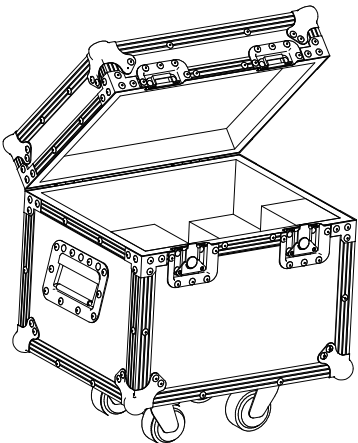
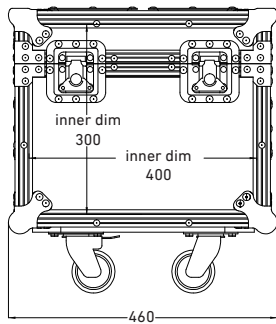
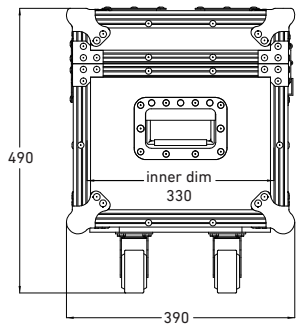
SU-CASE-D



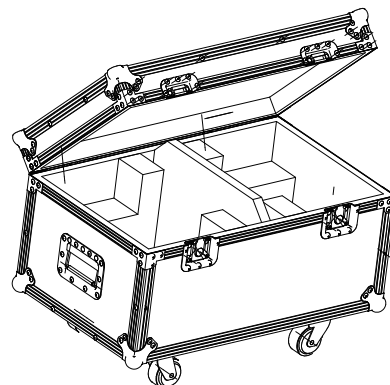
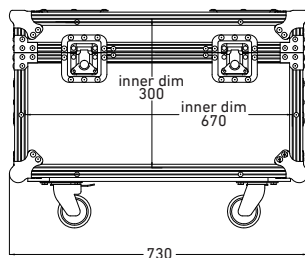
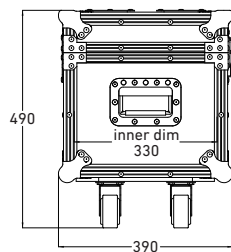
SU-CASE-W



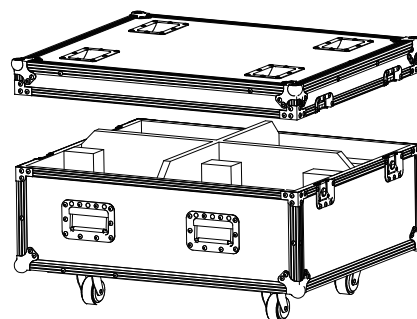
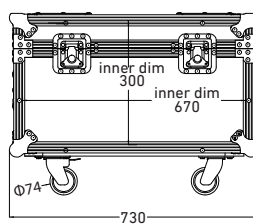
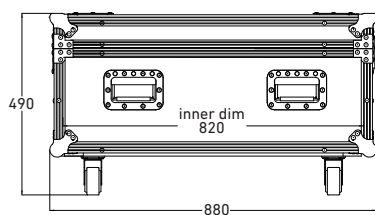
SK-CASE-320-ONE



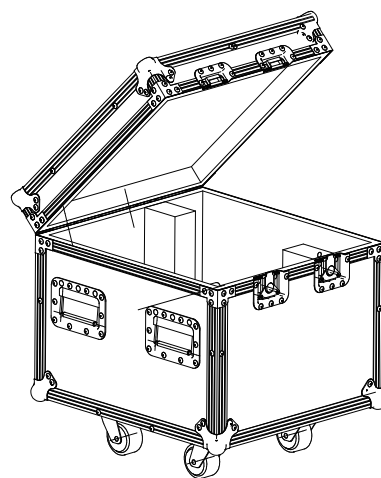
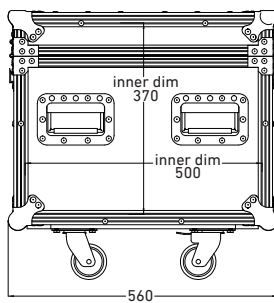
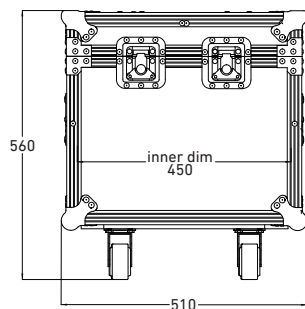
SK-CASE-320-TWO



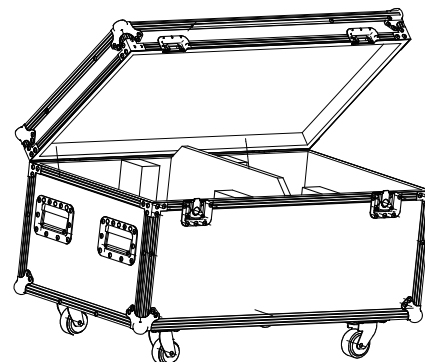
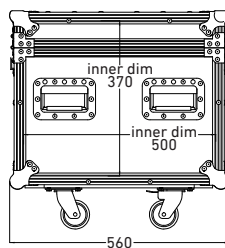
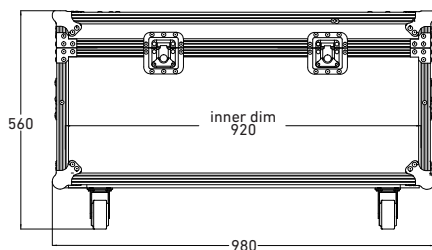
SK-CASE-320-FOUR



SK-CASE-1000-ONE



SK-CASE-1000-TWO



ENGINEERING CASES

Huaige Group provides customers with intelligent solutions



Ningbo International Convention and Exhibition Center



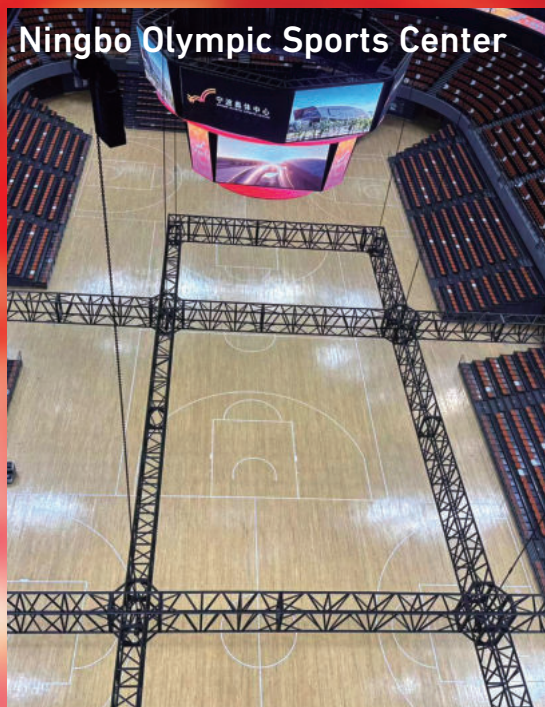
Huabiao Award



Wuhan Tourism Expo - Great Beauty China



Ningbo Olympic Sports Center



Zhuhai Jinwan Aviation City



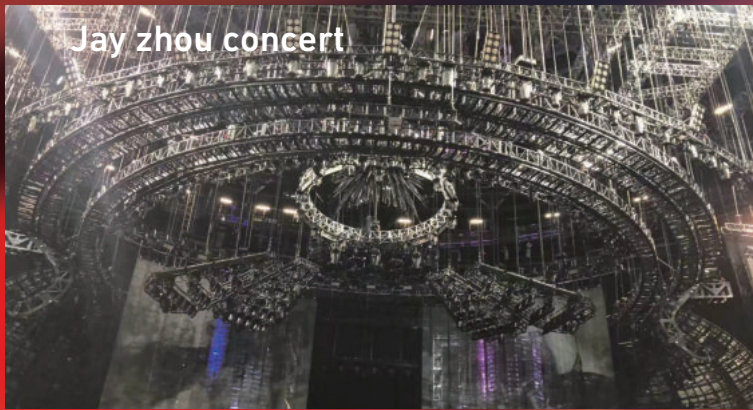
Shijiazhuang TV



Cambodian Bar



Jay zhou concert



Serving the spring festival gala for 5 consecutive years
2020-2025

