

# **CLARAVAL CATALOGUE 2024**



# THE MONASTERY COLLECTION

I think none of us was quite prepared for the impact. What was meant to be a brief first contact with Sónia Tavares, the extraordinary vocalist from The Gift, turned into an extraordinary day. This is the recording, completely impromptu, the startling power of Sónia's voice reverberating through this sacred place of habitual silence. We were in awe, and this was the starting point of our founding "Monastery Collection"



**SONIA**  
**Blue Velvet**



Ref: 12187F 11960

**Design**

The centerpiece of our iconic Monastery Collection. Created using our innovative soundwave technology, this vase embodies the essence of Sónia Tavares' unique voice, transforming musical notes into 3D shapes. In Velvet Blue, the piece exudes a deep, luxurious tone, enhancing its smooth lines and creating a sense of calm elegance.

**Features**

High-quality hand-made ceramics.  
Produced through traditional slip-casting techniques, in Portugal.  
Hand-finished in a textured mate glaze.

**Dimensions:** 400x320x580 mm

**SONIA**  
**Salt White**



Ref: 12187F 10064

**Design**

The centerpiece of our iconic Monastery Collection. Created using our innovative soundwave technology, this vase embodies the essence of Sónia Tavares' unique voice, transforming musical notes into 3D shapes. In Salt White, the piece reflects purity and simplicity, offering a soft, delicate finish that emphasizes its serene and elegant form.

**Features**

High-quality hand-made ceramics. Produced through traditional slip-casting techniques, in Portugal. Hand-finished in a textured mate glaze.

**Dimensions:** 400x320x580 mm



**SONIA**  
**Glacier White**



Ref: 12187F 56

**Design**

The centerpiece of our iconic Monastery Collection. Created using our innovative soundwave technology, this vase embodies the essence of Sónia Tavares' unique voice, transforming musical notes into 3D shapes. In Glacier White, the glossy finish adds a radiant, luxurious touch, capturing the light and enhancing the vase's bold and sculptural design.

**Features**

High-quality hand-made ceramics. Produced through traditional slip-casting techniques, in Portugal. Hand-finished in a textured mate glaze.

**Dimensions:** 400x320x580 mm

## SONIA Cosmic Black



Ref: 12187F 10465

### Design

The centerpiece of our iconic Monastery Collection. Created using our innovative soundwave technology, this vase embodies the essence of Sónia Tavares' unique voice, transforming musical notes into 3D shapes. In Cosmic Black, the deep matte finish evokes strength and mystery, creating a striking, dramatic presence that accentuates the vase's powerful form.

### Features

High-quality hand-made ceramics. Produced through traditional slip-casting techniques, in Portugal. Hand-finished in a textured mate glaze.

**Dimensions:** 400x320x580 mm

ELEGY



Flame Orange  
12295F 10315



Salt White  
12295F 10064



Pearl White  
12295F 61



Glacier White  
12295F 56



Cosmic Black  
12295F 10465



Ivory Beige  
12295F 10089

Design

A standout piece from our iconic Monastery Collection. Created using our innovative soundwave technology, this vase embodies the essence of Sónia Tavares' unique voice, transforming musical notes into 3D shapes. Available in a variety of colors, Elegy captures the intersection of sound, art, and emotion in every hue.

Features

High-quality hand-made ceramics. Produced through traditional slip-casting techniques, in Portugal. Hand-finished in a wide variety of glazes.

**Dimensions:** 155x280x570 mm



CELESTE



Volcanic Grey  
12186F 10175



Salt White  
12186F 10064



Pearl White  
12186F 61



Glacier White  
12186F 56



Cosmic Black  
12186F 10465



Ivory Beige  
12186F 10089

Design

The smallest yet most charming piece in our Monastery Collection. Created with our innovative soundwave technology, Celeste captures the purity of Sónia Tavares' voice in a delicate, sculptural form. Perfectly handcrafted, this petite vase embodies elegance and simplicity, offering a touch of artistry in a compact, accessible design.

Features

High-quality hand-made ceramics. Produced through traditional slip-casting techniques, in Portugal. Hand-finished in a wide variety of glazes.

**Dimensions:** 125x170x305 mm



EUPHONY



Flame Orange  
12188F 10315



Salt White  
12188F 10064



Lime Green  
12188F 10807



Glacier White  
12188F 56



Cosmic Black  
12188F 10465



Ivory Beige  
12188F 10089

Design

A graceful addition to our Monastery Collection, Euphony harmonizes sound and form through our innovative soundwave technology. This delicate vase embodies the fluidity of music, with its soft curves and hand-finished texture. Available in a range of both serene and vibrant colors, Euphony captures the essence of sound transformed into timeless beauty.

Features

High-quality hand-made ceramics.  
Produced through traditional slip-casting techniques, in Portugal.  
Hand-finished in a wide variety of glazes.

**Dimensions:** 290x270x520 mm

GRACE



Apple Green  
12184F 453



Pearl White  
12184F 61



Lime Green  
12184F 10807



Glacier White  
12184F 56



Cosmic Black  
12184F 10465



Ivory Beige  
12184F 10089

**Design**

An elegant piece from our Monastery Collection, Grace flows with slender curves and a minimalist silhouette. Crafted using our signature soundwave technology, it transforms Sónia Tavares' unique voice into a refined ceramic form. The vibrant colors add an unexpected touch, making Grace a true symbol of modern elegance and harmony between sound and art.

**Features**

High-quality hand-made ceramics. Produced through traditional slip-casting techniques, in Portugal. Hand-finished in a wide variety of glazes.

**Dimensions:** 140x205x580 mm



**MAGNIFICAT**  
**Cosmic Black**



Ref: 12249F 10465

**Design**

The grand statement piece from our Monastery Collection, Magnificat exudes majesty with its bold form and imposing presence. Crafted using Claraval's innovative soundwave technology, it captures the power of Sónia Tavares' voice in a breathtaking 3D shape. Available in the deep, rich Cosmic Black, this piece is a symbol of strength and elegance, perfect for those seeking a timeless, commanding work of art.

**Features**

High-quality hand-made ceramics.  
Produced through traditional slip-casting techniques, in Portugal.  
Hand-finished in a textured mate glaze.

**Dimensions:** 310x555x580 mm

## MAGNIFICAT Flame Orange



Ref: 12249F 10315

### Design

The grand statement piece from our Monastery Collection, Magnificat exudes majesty with its bold form and imposing presence. Crafted using Claraval's innovative soundwave technology, it captures the power of Sónia Tavares' voice in a breathtaking 3D shape. Now available in a vibrant Flame Orange, this version adds a striking energy, making it the perfect centerpiece for spaces that demand both boldness and sophistication.

### Features

High-quality hand-made ceramics.  
Produced through traditional slip-casting techniques, in Portugal.  
Hand-finished in a textured mate glaze.

**Dimensions:** 310x555x580 mm



**MAGNIFICAT**  
**Glacier White**



Ref: 12249F 56

**Design**

The Magnificat is the centerpiece of Claraval’s collection, merging majesty with avant-garde organic forms. With its glossy Glacier White surface, this masterpiece exudes a luxurious finish that captures light and enhances the purity of its lines. Created using our exclusive soundwave technology, the Magnificat transforms the essence of sound into tangible art. It stands as a testament to our commitment to excellence and innovation in ceramics.

**Features**

High-quality hand-made ceramics.  
Produced through traditional slip-casting techniques, in Portugal.  
Hand-finished in a high glossy glaze.

**Dimensions:** 310x555x580 mm



**MAJESTICA**  
**Pine Green**



Ref: 12308F 11825

**Design**

Introducing Majestica, a stunning piece from our renowned collection. Crafted with meticulous attention to detail, this vase features a rich Pine Green glaze that evokes the tranquility of nature. Utilizing our innovative soundwave technology, Majestica translates musical harmony into its elegant, flowing form. This piece not only serves as a striking decorative element but also embodies the fusion of art and technology, bringing a sense of serenity and sophistication to any space.

**Features**

High-quality hand-made ceramics.  
Produced through traditional slip-casting techniques, in Portugal.  
Hand-finished in a textured mate glaze.

**Dimensions:** 250x385x555 mm

MUSE



Pine Green  
12185F 11825



Pearl White  
12185F 61



Salt White  
12185F 10064



Glacier White  
12185F 56



Cosmic Black  
12185F 10465

Design

Discover the enchanting Muse, a captivating addition to our collection that embodies inspiration and creativity. This exquisite vase showcases a graceful silhouette, masterfully crafted to reflect the beauty of artistic expression. Utilizing our innovative soundwave technology, Muse transforms musical frequencies into its elegant design, creating a harmonious blend of art and sound. Available in a variety of colors, this piece serves as a stunning focal point, inviting you to explore the depths of imagination and aesthetic allure.

Features

High-quality hand-made ceramics. Produced through traditional slip-casting techniques, in Portugal. Hand-finished in a wide variety of glazes.

**Dimensions:** 180x315x570 mm



RESONANCE



Design

Introducing Resonance, a striking piece that embodies the power of sound and form. This elegant vase captures the essence of acoustic waves, translating them into a mesmerizing design that celebrates the beauty of harmony. Crafted with our advanced soundwave technology, Resonance features a smooth, flowing silhouette that invites contemplation and admiration. Its refined shape and serene color options make it a perfect centerpiece for any space, resonating with elegance and artistic flair.

Features

High-quality hand-made ceramics. Produced through traditional slip-casting techniques, in Portugal. Hand-finished in a wide variety of glazes.

**Dimensions:** 185x180x565 mm





REVERIE



Volcanic Grey  
12183F 10175



Salt White  
12183F 10064



Glacier White  
12183F 56



Pine Green  
12183F 11825



Pearl White  
12183F 61

Design

Step into a world of dreams with Reverie, a captivating vase that embodies the essence of imagination and creativity. This exquisite piece showcases a harmonious blend of form and function, inviting you to explore its delicate curves and intricate details. Crafted using innovative soundwave technology, Reverie transforms sound into a stunning visual experience. Its graceful silhouette and soft hues make it a perfect addition to any decor, inspiring a sense of tranquility and artistic expression in your space.

Features

High-quality hand-made ceramics.  
Produced through traditional slip-casting techniques, in Portugal.  
Hand-finished in a wide variety of glazes.

**Dimensions:** 270x440x295 mm

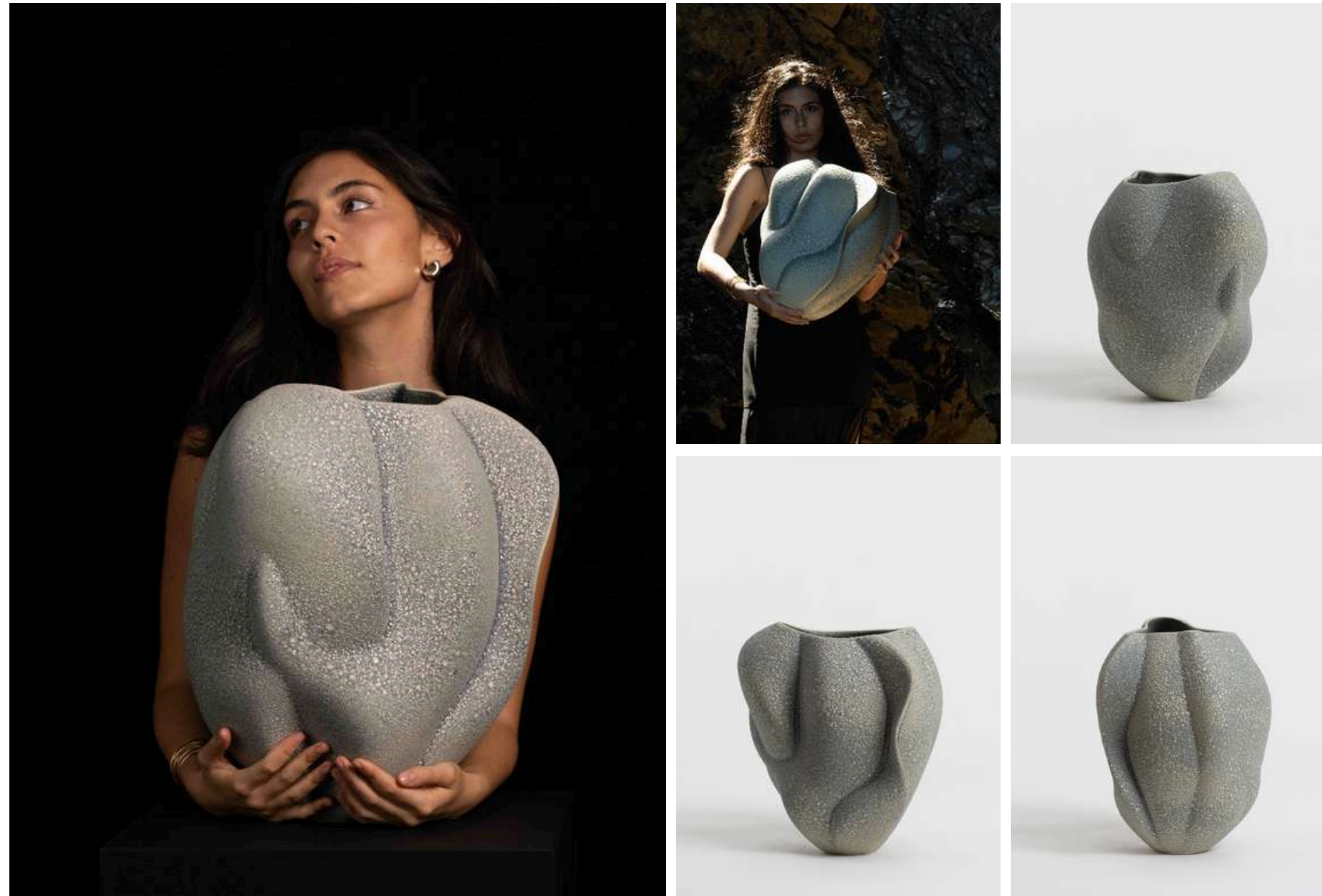
# MIA COLLECTION

Discovering Mia was fascinating. Standing alone on stage in Lisbon, she timidly introduced herself to the large crowd, Waiting for the piano, she then glanced up. The transformation was remarkable, suddenly totally focused, full of confidence and resolve. And then an intense performance of this emotional song of lost love, and thoughts first started emerging about the potential of this collaboration. At the end of the song, shy timidity returned. Throughout our work together, this opposition, this contrast, always present, has been a constant source of inspiration.



## THE EMBRACE

### Volcanic Grey



Ref: 12623F 10175

### Design

The Embrace, where two bodies intertwine; undulating shapes appear and disappear as the piece is viewed from different angles.

With handcrafted finishes and a unique glaze, The Embrace celebrates the harmony between sound and form, resulting in a contemporary piece with an innovative and elegant design.

### Features

High-quality hand-made ceramics.  
Produced through traditional slip-casting techniques, in Portugal.  
Hand-finished in a textured mate glaze.

**Dimensions:** 310x385x430 mm

## THE EMBRACE

### Pearl White



Ref: 12623F 61

### Design

The Embrace, where two bodies intertwine; undulating shapes appear and disappear as the piece is viewed from different angles.

With handcrafted finishes and a unique glaze, The Embrace celebrates the harmony between sound and form, resulting in a contemporary piece with an innovative and elegant design.

### Features

High-quality hand-made ceramics.  
Produced through traditional slip-casting techniques, in Portugal.  
Hand-finished in smooth mate glaze.

**Dimensions:** 310x385x430 mm



## THE EMBRACE

### Pearl Black



Ref: 12623F 211

### Design

The Embrace, where two bodies intertwine; undulating shapes appear and disappear as the piece is viewed from different angles.

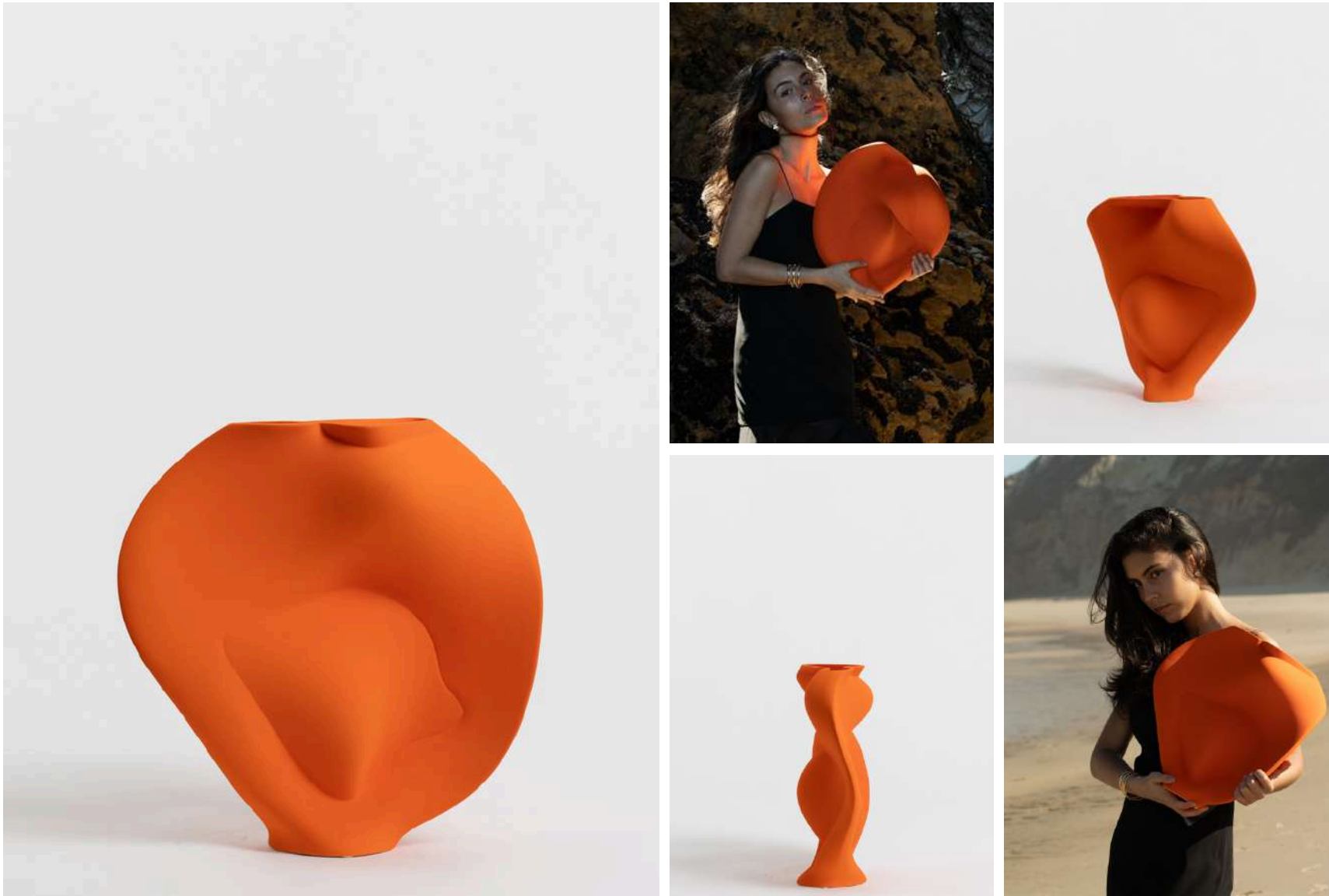
With handcrafted finishes and a unique glaze, The Embrace celebrates the harmony between sound and form, resulting in a contemporary piece with an innovative and elegant design.

### Features

High-quality hand-made ceramics.  
Produced through traditional slip-casting techniques, in Portugal.  
Hand-finished in smooth mate glaze.

**Dimensions:** 310x385x430 mm

THE HEART  
Flame Orange



Ref: 12619F 10315

Design

In The Heart, one can almost envision the structure of the atria and ventricles, as if we are gazing upon Mia's own heart. The vibrant Flame Orange symbolizes passion and intensity, revealing a strong and vibrant essence. As we shift our perspective, this piece surprises us with its delicate details, embodying both strength and vulnerability.

Features

High-quality hand-made ceramics.  
Produced through traditional slip-casting techniques, in Portugal.  
Hand-finished in textured mate glaze.

**Dimensions:** 140x375x385 mm

## THE HEART Salt White



Ref: 12619F 10064

### Design

In The Heart, the elegant form evokes the intricate structure of the heart, prompting us to wonder if we are witnessing the very essence of Mia's spirit. The Salt White adds a layer of purity and softness, showcasing a heart that is both full and strong. As we turn the piece, its delicate features emerge, offering an unexpected contrast that highlights the complexity of emotion.

### Features

High-quality hand-made ceramics.  
Produced through traditional slip-casting techniques, in Portugal.  
Hand-finished in textured mate glaze.

**Dimensions:** 140x375x385 mm

## THE PROMISE

### Yellow Popcorn



Ref: 12618F 11020

### Design

In The Promise, pure and complete forms contrast with the playful, blade-like element, symbolizing the determination needed to fulfill the promises of what is yet to come. The vibrant Popcorn Yellow, which reacts and sings when touched, invites engagement and joy, emphasizing the excitement that accompanies commitment.

### Features

High-quality hand-made ceramics.  
Produced through traditional slip-casting techniques, in Portugal.  
Hand-finished in a vibrant reactive glaze.

**Dimensions:** 265x330x570 mm



**THE PROMISE**  
**Pearl White**



Ref: 12618F 61

**Design**

In The Promise, the elegant, pure shapes stand in contrast to the sleek, blade-like detail, suggesting the resolve required to honor the commitments we make. The Pearl White adds a touch of sophistication, representing sincerity and clarity in every promise, making this piece a testament to the beauty of unwavering dedication.

**Features**

High-quality hand-made ceramics.  
Produced through traditional slip-casting techniques, in Portugal.  
Hand-finished in a smooth mate glaze.

**Dimensions:** 265x330x570 mm

THE PROMISE  
Cosmic Black



Ref: 12618F 10465

Design

In The Promise, the harmonious interplay of pure forms and the striking blade-like element reflects the strength and determination needed to fulfill what lies ahead. The deep Cosmic Black adds depth and intrigue, highlighting the profound nature of promises—serious yet beautiful, a reminder of the journey of commitment.

Features

High-quality hand-made ceramics.  
Produced through traditional slip-casting techniques, in Portugal.  
Hand-finished in a textured mate glaze.

**Dimensions:** 265x330x570 mm

THE CORE  
Flame Orange



Ref: 12621F 10315

Design

The Core embodies the essence of the body, capturing vitality and strength in its bold design. The vibrant Flame Orange signifies energy and passion, evoking a sense of life and movement. This piece represents the heart of Mia’s artistry, reminding us of the power within each of us. Its organic shape invites contemplation, showcasing the beautiful connection between form and emotion.

Features

High-quality hand-made ceramics.  
Produced through traditional slip-casting techniques, in Portugal.  
Hand-finished in a textured mate glaze.

**Dimensions:** 200x440x560 mm



## THE CORE Lime Green



Ref: 12621F 10807

### Design

In The Core, the vibrant Lime Green embodies the essence of vitality and growth, representing the body in its most dynamic form. This lively color signifies renewal and energy, inviting viewers to connect with their own inner strength. The organic design captures the fluidity of movement, while also reminding us of the interconnectedness of life. This piece is a celebration of the body's potential, showcasing the beautiful balance between nature and artistry.

### Features

High-quality hand-made ceramics.  
Produced through traditional slip-casting techniques, in Portugal.  
Hand-finished in a high glossy glaze.

**Dimensions:** 200x440x560 mm

THE CORE  
Pearl White



Ref: 12621F 61

Design

In The Core, the elegant form reflects the purity and complexity of the body. The soft Pearl White adds a layer of sophistication and tranquility, representing the essence of life that flows through us. This piece serves as a reminder of the delicate balance between strength and fragility, inviting viewers to explore their own inner core and emotional depth.

Features

High-quality hand-made ceramics.  
Produced through traditional slip-casting techniques, in Portugal.  
Hand-finished in a smooth mate glaze.

**Dimensions:** 200x440x560 mm

THE TEAR  
Pine Green



Ref: 12622F 11825

Design

The Tear captures the essence of reflection and vulnerability. The rich Pine Green symbolizes growth and renewal, evoking a sense of calm and introspection. This piece embodies the beauty found in moments of sadness and joy, inviting viewers to explore the depths of their emotions. Its organic form, reminiscent of nature, encourages a connection with one’s inner self.

Features

High-quality hand-made ceramics.  
Produced through traditional slip-casting techniques, in Portugal.  
Hand-finished in a textured mate glaze.

**Dimensions:** 210x305x420 mm



THE TEAR  
Lime Green



Ref: 12622F 10807

Design

In The Tear, the vibrant Lime Green adds a playful touch, representing spontaneity and freshness. This lively hue infuses the piece with energy, while its delicate shape suggests the complexity of emotions. The combination of colors emphasizes the intricate balance between happiness and sorrow, capturing the transient nature of feelings and experiences.

Features

High-quality hand-made ceramics.  
Produced through traditional slip-casting techniques, in Portugal.  
Hand-finished in a high glossy glaze.

**Dimensions:** 210x305x420 mm

**THE TEAR**  
**Pearl White**



Ref: 12622F 61

**Design**

With its elegant Pearl White finish, The Tear reflects purity and clarity amidst emotional depths. This color signifies the beauty of vulnerability, showcasing the strength that comes from acknowledging one’s feelings. The smooth surface and graceful curves invite contemplation, highlighting the profound connection between art and the human experience.

**Features**

High-quality hand-made ceramics.  
Produced through traditional slip-casting techniques, in Portugal.  
Hand-finished in a smooth mate glaze.

**Dimensions:** 210x305x420 mm

## ANIMA Lime Green



Ref: 12643F 10807

### Design

Anima embodies the vibrant energy of creativity and life. The lively Lime Green signifies freshness and enthusiasm, inviting a sense of playfulness and inspiration. This piece captures the essence of Mia's artistic spirit, celebrating the connection between sound and form. Much like the Latin word for "soul," Anima reflects the joy found in self-expression and the inner vitality that drives creativity.

### Features

High-quality hand-made ceramics.  
Produced through traditional slip-casting techniques, in Portugal.  
Hand-finished in a high glossy glaze.

**Dimensions:** 345x425x480 mm



## ANIMA Flame Orange



Ref: 12643F 10315

### Design

In Anima, the bold Flame Orange represents passion and vitality, symbolizing the fiery essence of artistic inspiration. This color infuses the piece with warmth and energy, evoking feelings of excitement and courage. The organic shapes of Anima invite exploration and connection, showcasing the beauty of embracing one's true self and the transformative power of creativity, echoing the soulful nature inherent in art.

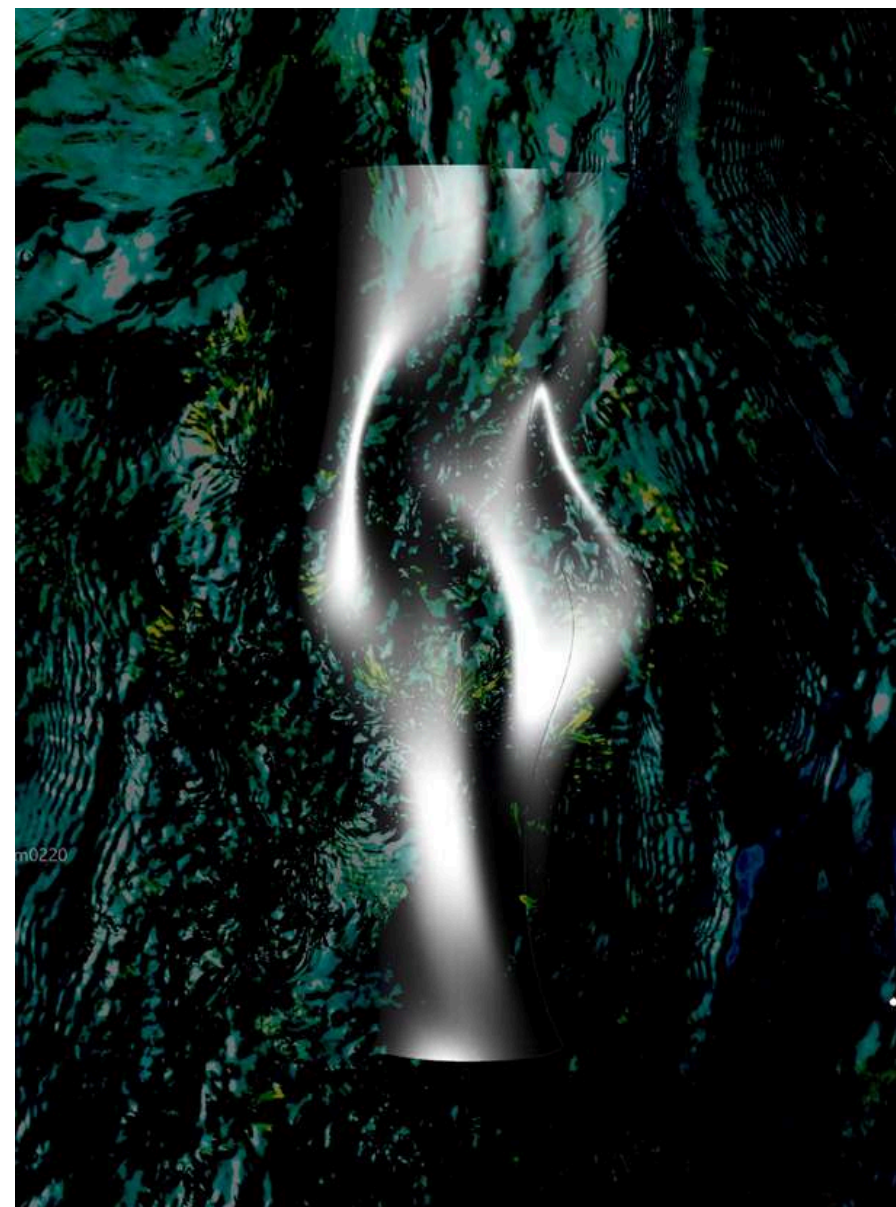
### Features

High-quality hand-made ceramics.  
Produced through traditional slip-casting techniques, in Portugal.  
Hand-finished in a textured mate glaze.

**Dimensions:** 345x425x480 mm

# FOZ COLLECTION

At Foz do Douro, Porto, the great river finally meets the sea. As the waters from ocean and land mix, the line between the two is visible as turbulent motions from distant places finally join. The pieces from this collection originate from the sound of this event, reflecting a unique place and time.



## FLO Verdigris



Ref: 12625F 10986

### Design

Flo is a captivating piece from the Foz Collection, inspired by the gentle sounds of the Douro River as it flows into the Atlantic. This elegant vase embodies the fluidity and grace of water, with organic curves that mimic the river's natural movement. Crafted using our innovative techniques, Flo captures the essence of serenity and tranquility found in nature. Its harmonious design invites contemplation, making it a perfect addition to any space where the beauty of sound and form intertwine.

### Features

High-quality hand-made ceramics.  
Produced through traditional slip-casting techniques, in Portugal  
Hand-finished in a smooth mate glaze.

**Dimensions:** 245x260x565 mm



# **CLARAVAL**

## **CATALOGUE 2024**

