

ALESSI

ALESSI TALES
DESIGN BY ALESSANDRO MENDINI

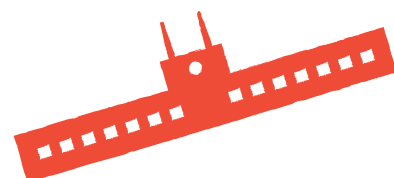
2024

EN

SLOT 3

ALESSI.COM

ALESSI S.P.A VIA PRIVATA ALESSI, 6
28887 CRUSINALLO (VB) ITALIA



COD. AM01A 5



COD. AM01A 6



COD. AM01A 7



COD. AM23A 30



COD. AM23A 31



COD. AM23A 32

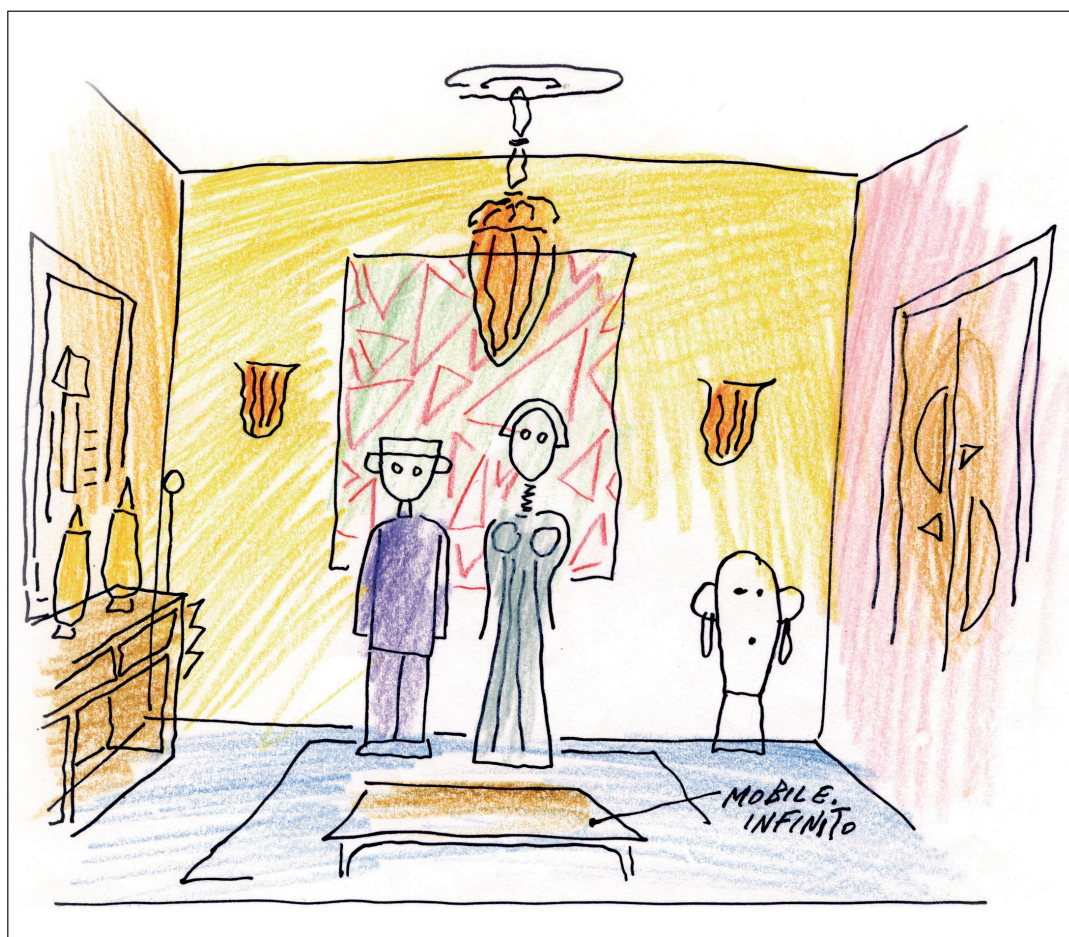
A never-ending story

In 1994 Alessandro Mendini designed the Anna G. corkscrew, manufactured by Alessi in chromed zamak and thermoplastic resin. Approximately ten years later Alessandro M. was born, a second corkscrew that completed an iconic couple. We now launch a creative and technological exploration to celebrate their anniversary, a project that goes beyond giving the two characters a new look and renews their substance by using an innovative biocomposite. Starting from the concept of hybridization, a recurring theme in Mendini's work, we involved three different

talents coming from the worlds of fashion, graphic design and painting. Arthur Arbesser, Studio Temp, and Fulvia Mendini thus conceived fresh and unexpected outfits for Anna G. and Alessandro M.

They've given a very personal interpretation of two great classics, which are now also sustainable thanks to AlkiPaper®, a new biodegradable material used for the body, developed by Alkivio Srl Società Benefit, a start-up launched by Istituto Italiano di Tecnologia (IIT) and Novacart SpA, one of the foremost producers of food paper in the world.

ALESSI TALES
DESIGN BY ALESSANDRO MENDINI



DEDICATED TO

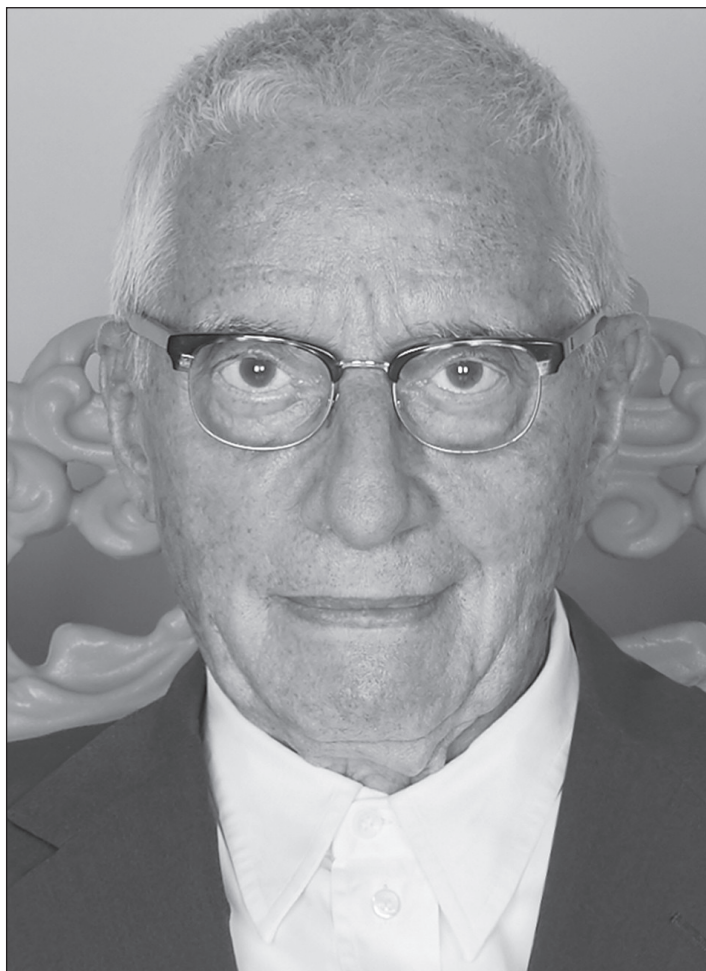
To the collectors of Alessandro Mendini and his transforming corkscrews, and to those in search of an accessible and sustainable gift. Accessible, as only a corkscrew can be, and sustainable thanks to the use of an innovative biocomposite employed in the construction of the body, free of petroleum derivatives and therefore biodegradable.



Alessandro Mendini

ANNA G. CORKSCREW

ALESSANDRO M. CORKSCREW



BIO

Born in Milan in 1931, Alessandro Mendini was one of the main innovators of Italian design in the 1980s. Internationally renowned architect, artist, designer, design manager and theorist, he edited leading magazines on the culture of design, spreading his calls for renewal. His long association with Alessi was culturally multifaceted: official historiographer, designer of iconic objects such as the Anna G. corkscrew, architect of the Alessi Museum, of extensions to the Omegna headquarters and of temporary exhibitions, he was the creator and coordinator of projects that have helped transform the company into one of the factories of renowned Italian Design.

QUOTE

“I have often focused on the human figure and the face, as formal interlocutors of very high intensity, endowing an object with expression. This play on the portraiture of design, or portraiture on the architectural scale, which goes back thousands of years, is something I like very much.” Alessandro Mendini



A forest fairy tale

To celebrate the iconic pair of corkscrews designed by her father Alessandro, Fulvia Mendini has imagined a fairytale in an oak forest in which the two characters dance in an endless search for desires and secrets. This resulted in two new tree dresses, two eye-catching patterns that emphasise the soft and delicate design of these iconic corkscrews.

CORKSCREWS ANNA G.
AND ALESSANDRO M. ARBOREA
DESIGN BY ALESSANDRO MENDINI
PATTERN DESIGN
BY FULVIA MENDINI



Fulvia Mendini



BIO

Fulvia Mendini was born in 1966 in Milan, where she also lives and works. After studying illustration and graphics at the European Institute of Design, she worked at Atelier Mendini and co-operated with various companies. She then embarked on a personal artistic and decorative research journey, focussing primarily on the world of nature and portraiture. Her design language is influenced by the world of graphic design and the tradition of arts and crafts. Her works have been shown at the Grand Palais in Paris, the Triennale in Milan, the Biennale in Prague and in numerous galleries and have been included in the collections of the Byblos Art Hotel in Verona and the Stazioni dell'Arte Salvator Rosa and Mater Dei della Metropolitana di Napoli. Since 2019, she has been managing her father Alessandro Mendini's archives and studio together with her sister Elisa.

QUOTE

"This design brings together oak leaves and foliage in an ensemble that becomes a tree-like dress in shades of green and pink. I imagined Anna G. and Alessandro M. as fairy-tale characters living in the enchanted forest of William Shakespeare's play 'A Midsummer Night's Dream'. In their leaf-covered dresses, they float in the meadows among the fairy flowers in a round of festive dances, in an endless search for secrets and hidden desires."
Fulvia Mendini



Corkscrews

CORKSCREWS

The corkscrews consist of a body made of AlkiPaper® biocomposite, decorated with a hand-applied sticker and containing the lever mechanism made of chrome-plated zamak and rolled steel.



CORKSCREW IN ALKIPAPER® AND CHROME-PLATED ZAMAK. PATTERN DESIGN BY FULVIA MENDINI.

VARIANTS



COD. AM01A 7
Ø CM 7 - H CM 24,5



COD. AM23A 32
Ø CM 6 - H CM 21

DESIGN NOTES

Enchanted

The two most famous design portraits in the history of Alessi, set in an imaginative oak forest. A playful, enchanted celebration in shades of green and pink.

Evocative

Fully functional but also culturally provocative, they are perfect for everyday use or for viewing as artistic domestic presences.

SUSTAINABILITY AND SAFETY

Zamak is a zinc-based alloy which during the manufacturing process does not release any substances into the environment that could cause pollution. The low melting temperature of the alloy also allows considerable energy savings, and this helps to reduce the exploitation of natural resources further upstream.

AlkiPaper® is a patented biocomposite based on paper, other raw materials of natural origin and functional components. Although it has similar processing properties to plastic, it is designed to decompose under controlled conditions at the end of its life, making it a more sustainable alternative to conventional plastics.

The metal parts and nylon elements can be easily dismantled so that the materials can be recycled.

USE AND MAINTENANCE

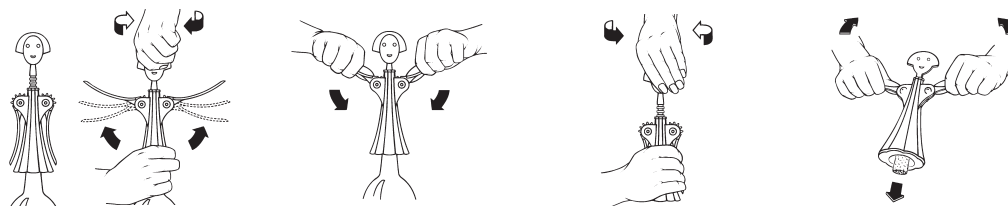
ANNA G. ARBOREA

Position the corkscrew on the neck of the bottle, making sure that levers are down.

Screw, into the cork, turning the head clockwise and letting the levers rise into the vertical position.

Push the levers down to remove the cork from the bottle.

Remove the cork from the steel screw by holding the levers down and turning the head anticlockwise. The final stage can be made easier by raising the levers.



ALESSANDRO M. ARBOREA

Position the corkscrew on the neck of the bottle. Screw into the cork, turning head clockwise until the cork is completely extracted from the bottle. Remove the cork from steel screw by turning the head anticlockwise.



EASY TO CLEAN

We recommend the use of a damp cloth or sponge with a liquid detergent. We advise against using the dishwasher for cleaning. Modern-day detergents and additives and the high temperatures reached during the wash cycle can cause irreparable damage to the surface finish of the product.

EASY TO MAINTAIN OVER TIME

Under specific environmental conditions, certain parts of this product may show signs of oxidation. In such cases, any marks can be removed with a soft cloth and a special non-abrasive cleaning product normally found in shops.



The collection



COD. AM01A 5 - Anna G. - Parade
Design Alessandro Mendini (1994)

Corkscrew in AlkiPaper® and chrome-plated zamak. Pattern design by Arthur Arbesser.

Ø cm 7 – h cm 24,5



COD. AM23A 30
Alessandro M. - Parade
Design Alessandro Mendini (2003)

Corkscrew in AlkiPaper® and chrome-plated zamak. Pattern design by Arthur Arbesser.

Ø cm 6 – h cm 21



COD. AM01A 6 - Anna G. - Liquid
Design Alessandro Mendini (1994)

Corkscrew in AlkiPaper® and chrome-plated zamak. Pattern design by Studio Temp.

Ø cm 7 – h cm 24,5



COD. AM23A 31
Alessandro M. - Liquid
Design Alessandro Mendini (2003)

Corkscrew in AlkiPaper® and chrome-plated zamak. Pattern design by Studio Temp.

Ø cm 6 – h cm 21



An exchange of dress between history, art, fashion and design

Arthur Arbesser's new design for Anna G. and Alessandro M. reflects his unmistakable style, which combines influences from the art and architecture of his home city of Vienna with a contemporary and modern sensibility. In his personal interpretation of the clothing of the two famous corkscrews, Arbesser focuses on clear lines and unexpected colour combinations, which also represent the hallmarks of his collections. The result is garments that are visually appealing and structurally interesting. A fascinating change of apparel that combines the world of design with the original

expressiveness of one of the most interesting, talented designers in contemporary fashion.

CORKSCREWS ANNA G. AND
ALESSANDRO M. PARADE
DESIGN BY ALESSANDRO MENDINI
PATTERN DESIGN
ARTHUR ARBESSER



Arthur Arbesser



BIO

Born in Vienna, Arthur Arbesser was deeply immersed in the city's history and culture as he grew up. After graduating from London's Central Saint Martins College he moved to Milan to work for a leading fashion house for several years. Subsequent to launching his label and being a finalist of the 2015 LVMH prize, he quickly became recognized for his graphic aesthetics and personal design language. Aside from his namesake label, Arbesser is a creative consultant and also works on numerous collaborations from furniture to product design. Costume design for ballet and opera complete his creative world.

QUOTE

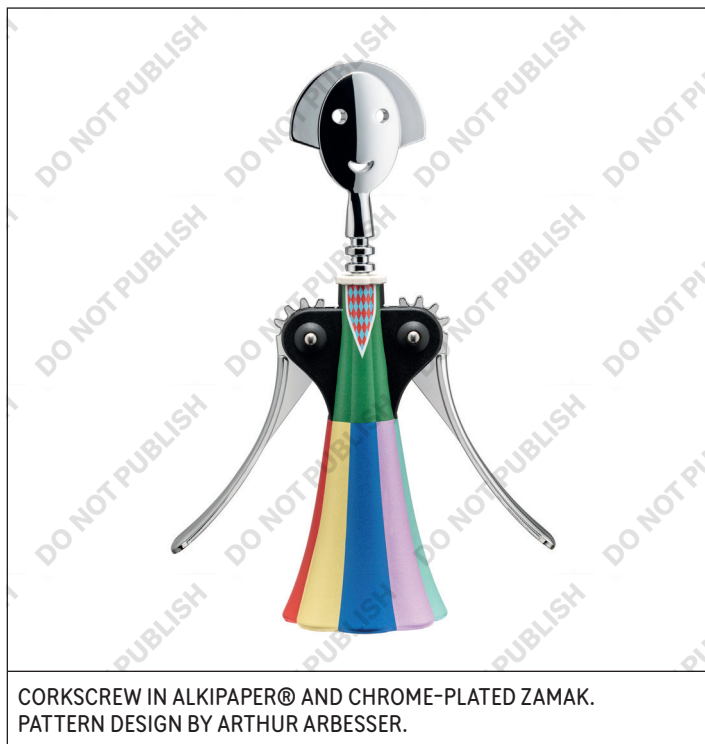
"With our versions of Alessandro M. and Anna G. we want to take you on a Parade. A parade of beloved Alessi pieces and a parade of geometric patterns and colors. A composition focused on surface rather than form, just like in our collections. We work a lot with prints, graphic effects, and patterns that turn into special effects once sewn and transformed into a garment." Arthur Arbesser



Corkscrew

CORKSCREW

The corkscrews consist of a body made of AlkiPaper® biocomposite, decorated with a hand-applied sticker and containing the lever mechanism made of chrome-plated zamak and rolled steel.



VARIANTS



COD. AM01A 5
Ø CM 7 - H CM 24,5



COD. AM23A 30
Ø CM 6 - H CM 21

DESIGN NOTES

A new dress for an icon of history

The Anna G. corkscrew is an ironic homage to a real woman and a true “design portrait”. Having become a cult figure over the years, it is re-interpreted by Arthur Arbesser, who enhanced its design with a skilful juxtaposition of coloured backgrounds.

A hybrid of dressing

A fusion of cultural, artistic and modern influences dresses the Alessandro M. corkscrew in a new guise, a self-portrait of its author, an object-creature with a soft design.



SUSTAINABILITY AND SAFETY

Zamak is a zinc-based alloy which during the manufacturing process does not release any substances into the environment that could cause pollution. The low melting temperature of the alloy also allows considerable energy savings, and this helps to reduce the exploitation of natural resources further upstream.

AlkiPaper® is a patented biocomposite based on paper, other raw materials of natural origin and functional components. Although it has similar processing properties to plastic, it is designed to decompose under controlled conditions at the end of its life, making it a more sustainable alternative to conventional plastics.

The metal parts and nylon elements can be easily dismantled so that the materials can be recycled.

USE AND MAINTENANCE

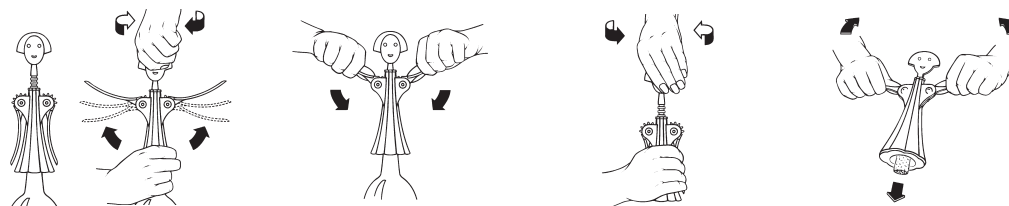
ANNA G. PARADE

Position the corkscrew on the neck of the bottle, making sure that levers are down.

Screw, into the cork, turning the head clockwise and letting the levers rise into the vertical position.

Push the levers down to remove the cork from the bottle.

Remove the cork from the steel screw by holding the levers down and turning the head anticlockwise. The final stage can be made easier by raising the levers.



ALESSANDRO M. PARADE

Position the corkscrew on the neck of the bottle. Screw into the cork, turning head clockwise until the cork is completely extracted from the bottle. Remove the cork from steel screw by turning the head anticlockwise.



EASY TO CLEAN

We recommend the use of a damp cloth or sponge with a liquid detergent. We advise against using the dishwasher for cleaning. Modern-day detergents and additives and the high temperatures reached during the wash cycle can cause irreparable damage to the surface finish of the product.

EASY TO MAINTAIN OVER TIME

Under specific environmental conditions, certain parts of this product may show signs of oxidation. In such cases, any marks can be removed with a soft cloth and a special non-abrasive cleaning product normally found in shops.



The collection



COD. AM01A 6 - Anna G. - Liquid
Design Alessandro Mendini (1994)

Corkscrew in AlkiPaper®
and chrome-plated zamak.
Pattern design by Studio Temp.

Ø cm 7 – h cm 24,5



COD. AM23A 31
Alessandro M. - Liquid
Design Alessandro Mendini (2003)

Corkscrew in AlkiPaper®
and chrome-plated zamak.
Pattern design by Studio Temp.

Ø cm 6 – h cm 21



COD. AM01A 7 - Anna G. - Arborea
Design Alessandro Mendini (1994)

Corkscrew in AlkiPaper®
and chrome-plated zamak.
Pattern design by Fulvia Mendini.

Ø cm 7 – h cm 24,5



COD. AM23A 32
Alessandro M. - Arborea
Design Alessandro Mendini (2003)

Corkscrew in AlkiPaper®
and chrome-plated zamak.
Pattern design by Fulvia Mendini.

Ø cm 6 – h cm 21



Contemporary X-ray images

The creative trio from Studio Temp draws from the deep reservoir of street art to create a contemporary and cryptic interpretation of the two iconic corkscrews by Alessandro Mendini. The graphics presented are the result of a personal imprint full of eclectic ideas, ranging from street signs to modern data protection techniques. As a tribute to the professional career of the father of one of the three designers, a radiologist, the decoration contains phosphorescent elements that are only visible in the dark. A surprising juxtaposition of references and memories, a

deconstructed puzzle that immediately creates order again when the light goes out.

CORKSCREWS ANNA G. AND
ALESSANDRO M. LIQUID
DESIGN BY ALESSANDRO MENDINI
PATTERN DESIGN
STUDIO TEMP



Studio Temp



BIO

Studio Temp is a graphic design studio founded by Guido Daminelli, Marco Fasolini and Fausto Giliberti in Bergamo. Since 2007, it has concentrated mostly on editorial and identity graphic design.

QUOTE

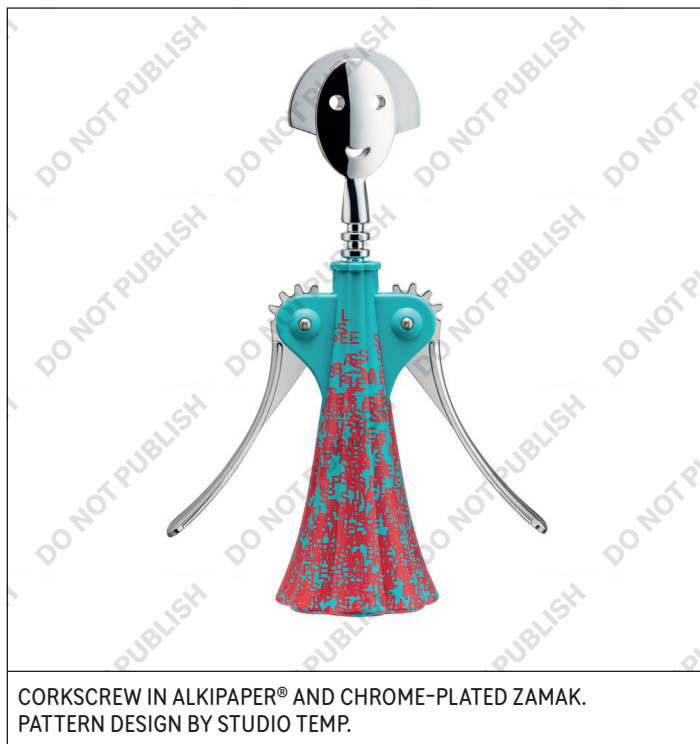
“The liquid design is based on an analysis of the decal technique and is orientated in particular around the colour of the decal sheets of model kits. The red graphic motifs on Anna G. are inspired by the security textures printed on bank letters, while the motifs on Alessandro M. are reworked elements of popular graphics. The two corkscrews reveal a second level of visibility when they are first exposed to light and then placed in a dark room.” Studio Temp



Corkscrew

CORKSCREW

The corkscrews consist of a body made of AlkiPaper® biocomposite, decorated with a hand-applied sticker and containing the lever mechanism made of chrome-plated zamak and rolled steel.



VARIANTS



COD. AM01A 6
Ø CM 7 - H CM 24,5



COD. AM23A 31
Ø CM 6 - H CM 21

DESIGN NOTES

Street Art

The decoration worn by Alessandro M. is a daring excursion into the world of street graphics. A collage of signs, lettering and logos into which various elements of the designers' inspiration are seamlessly integrated.

Decal

The colour scheme is based on the decals that came with Japanese model kits and became cult objects for young people in the late 1990s and early 2000s.



Phosphorescence

A phosphorescent pigment creates a striking formal play in the darkness, reminiscent of X-rays, which was used to draw the skeleton of Alessandro M. Security textures printed on bank envelopes show the words ALESSI and TEMP on Anna G.'s body.



SUSTAINABILITY AND SAFETY

Zamak is a zinc-based alloy which during the manufacturing process does not release any substances into the environment that could cause pollution. The low melting temperature of the alloy also allows considerable energy savings, and this helps to reduce the exploitation of natural resources further upstream.

AlkiPaper® is a patented biocomposite based on paper, other raw materials of natural origin and functional components. Although it has similar processing properties to plastic, it is designed to decompose under controlled conditions at the end of its life, making it a more sustainable alternative to conventional plastics.

The metal parts and nylon elements can be easily dismantled so that the materials can be recycled.

USE AND MAINTENANCE

ANNA G. LIQUID

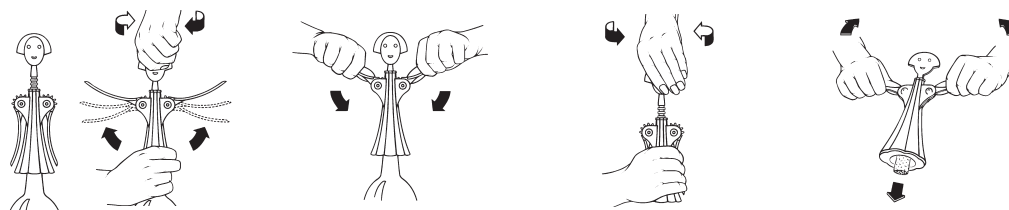
Position the corkscrew on the neck of the bottle, making sure that levers are down.

Screw, into the cork, turning the head clockwise and letting the levers rise into the vertical position.

Push the levers down to remove the cork from the bottle.

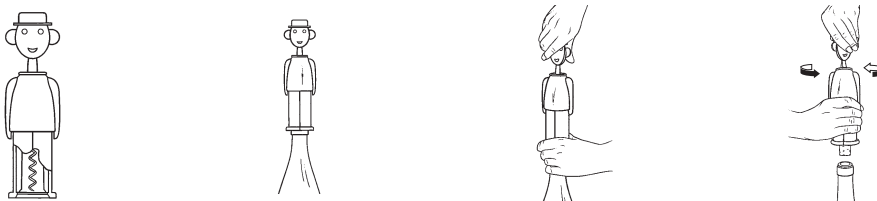
Remove the cork from the steel screw by holding the levers down and turning the head anticlockwise. The final stage can be made easier by raising the levers.





ALESSANDRO M. LIQUID

Position the corkscrew on the neck of the bottle. Screw into the cork, turning head clockwise until the cork is completely extracted from the bottle. Remove the cork from steel screw by turning the head anticlockwise.



EASY TO CLEAN

We recommend the use of a damp cloth or sponge with a liquid detergent. We advise against using the dishwasher for cleaning. Modern-day detergents and additives and the high temperatures reached during the wash cycle can cause irreparable damage to the surface finish of the product.

EASY TO MAINTAIN OVER TIME

Under specific environmental conditions, certain parts of this product may show signs of oxidation. In such cases, any marks can be removed with a soft cloth and a special non-abrasive cleaning product normally found in shops.



The collection



COD. AM01A 5 - Anna G. - Parade
Design Alessandro Mendini (1994)

Corkscrew in AlkiPaper® and chrome-plated zamak.
Pattern design by Arthur Arbesser.

Ø cm 7 – h cm 24,5



COD. AM23A 30
Alessandro M. - Parade
Design Alessandro Mendini (2003)

Corkscrew in AlkiPaper® and chrome-plated zamak.
Pattern design by Arthur Arbesser.

Ø cm 6 – h cm 21



COD. AM01A 7 - Anna G. - Arborea
Design Alessandro Mendini (1994)

Corkscrew in AlkiPaper® and chrome-plated zamak.
Pattern design by Fulvia Mendini.

Ø cm 7 – h cm 24,5



COD. AM23A 32
Alessandro M. - Arborea
Design Alessandro Mendini (2003)

Corkscrew in AlkiPaper® and chrome-plated zamak.
Pattern design by Fulvia Mendini.

Ø cm 6 – h cm 21

